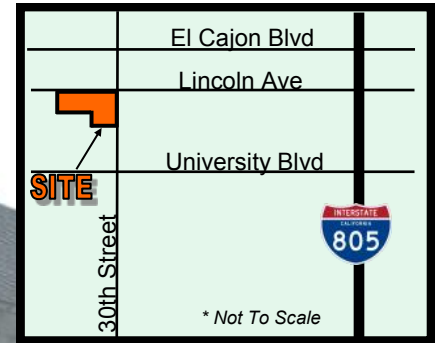


FOR LEASE

SWC 30TH AND LINCOLN AVE, SAN DIEGO, CA 92104

CORNER LOCATION - NORTH PARK

ONE OF THE LAST CORNERS IN NORTH PARK!



AVAILABLE: 500 - 2,800 SF

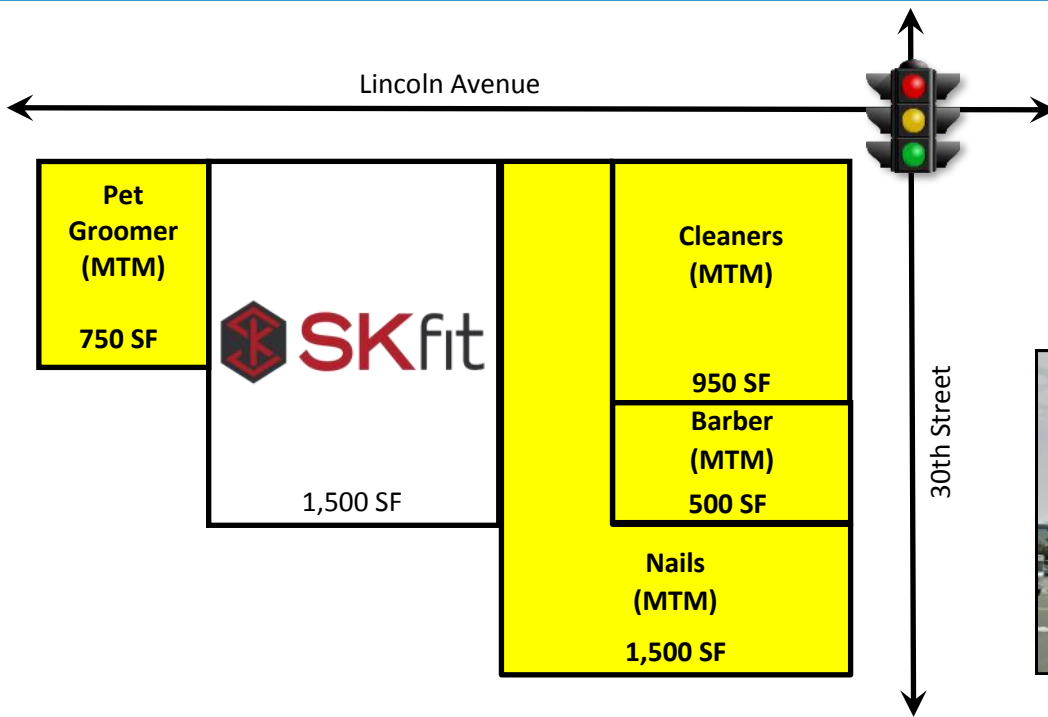
FOR MORE INFORMATION ABOUT THIS PROPERTY, PLEASE CONTACT:

SCOTT DUHS
(619) 491-0614
SCOTT@DUHSCOMMERCIAL.COM
CA LICENSE: 01048874

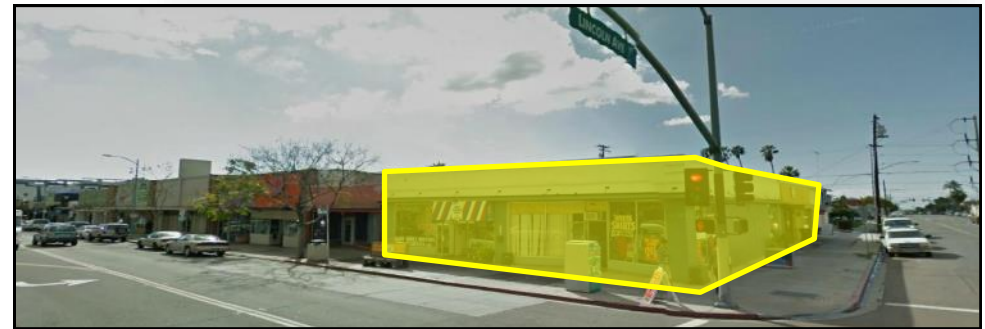


NO WARRANTY OR REPRESENTATION IS MADE TO THE ACCURACY OF THE FOREGOING INFORMATION. TERMS OF SALE OR LEASE AND AVAILABILITY ARE SUBJECT TO CHANGE OR WITHDRAWAL WITHOUT NOTICE.
3830 RAY STREET, SAN DIEGO, CA 92104 | PHONE (619) 491-0335 | FAX (619) 491-0696 | WWW.DUHSCOMMERCIAL.COM

SITE PLAN



EXISTING

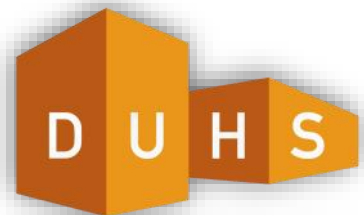


AFTER REMODEL—RENDERING



FOR MORE INFORMATION ABOUT THIS PROPERTY, PLEASE CONTACT:

SCOTT DUHS
(619) 491-0614
SCOTT@DUHSCOMMERCIAL.COM
CA LICENSE: 01048874



COMMERCIAL
BROKERAGE • INVESTMENT • DEVELOPMENT

AERIAL



<u>DEMOGRAPHICS (2015)</u>			
	<u>1 MILE</u>	<u>3 MILES</u>	<u>5 MILES</u>
POPULATION:	51,735	263,476	569,108
AVERAGE HH INCOME:	\$57,739	\$65,954	\$68,452
TRAFFIC COUNTS:			
30th & Lincoln	13,509 Cars Per Day (2015)		
University	22,687 Cars Per Day (2015)		

SITE

FOR MORE INFORMATION ABOUT THIS PROPERTY, PLEASE CONTACT:

SCOTT DUHS
 (619) 491-0614
 SCOTT@DUHSCOMMERCIAL.COM
 CA LICENSE: 01048874



NO WARRANTY OR REPRESENTATION IS MADE TO THE ACCURACY OF THE FOREGOING INFORMATION. TERMS OF SALE OR LEASE AND AVAILABILITY ARE SUBJECT TO CHANGE OR WITHDRAWAL WITHOUT NOTICE.
 3830 RAY STREET, SAN DIEGO, CA 92104 | PHONE (619) 491-0335 | FAX (619) 491-0696 | WWW.DUHSCOMMERCIAL.COM