

RENO PROPERTY / FOR LEASE BY OWNER

1300 - 1314 S. Wells Ave. & 300 - 306 Vassar St., Reno, NV 89502

- AVAILABLE: 1,036 - 2,128 SF
- REMODEL COMPLETE!
- EXCELLENT STREET VISIBILITY & SIGNAGE
- SIGNALIZED CORNER
- HEAVY FOOT TRAFFIC



For more information about this property, please contact owner:

Craig Duhs
(619) 540-1001
Craig@DuhsCommercial.com
CA License: 01086079

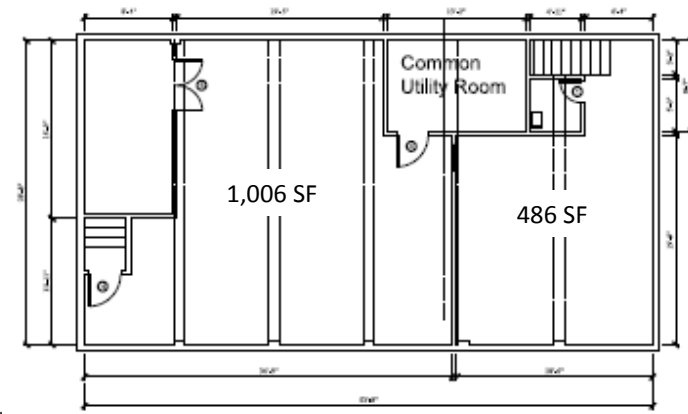
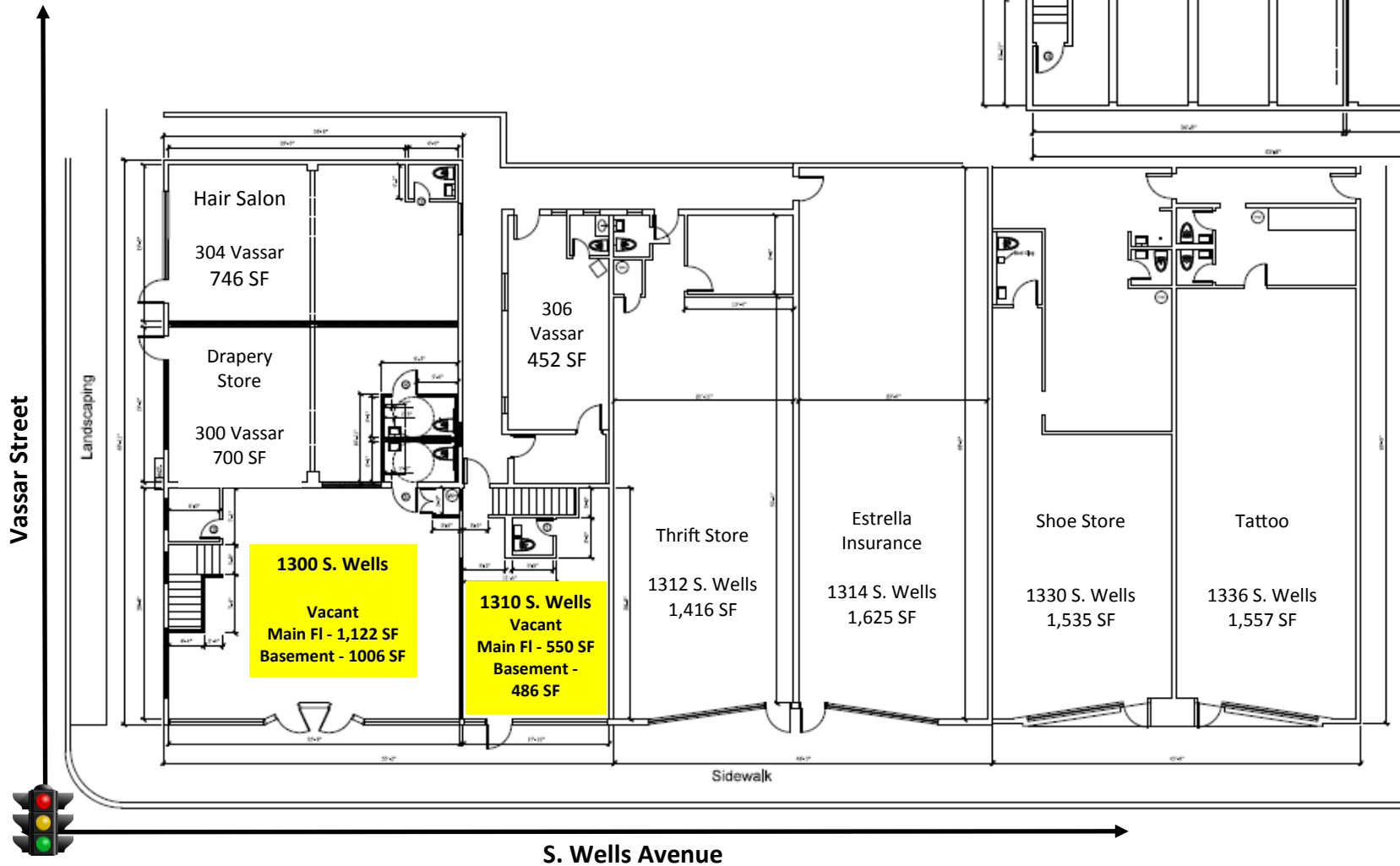


No warranty or representation is made to the accuracy of the foregoing information. Terms of sale or lease and availability are subject to change or withdrawal without notice.

3830 Ray Street, San Diego, CA 92104 | Phone (619) 491-0335 | Fax (619) 491-0696 | www.DuhsCommercial.com

SITE PLAN

S. Wells Avenue & Vassar Street, Reno, NV 89502



For more information about this property, please contact owner:

Craig Duhs
 (619) 540-1001
 Craig@DuhsCommercial.com
 CA License: 01086079



COMMERCIAL
 BROKERAGE • INVESTMENT • DEVELOPMENT

No warranty or representation is made to the accuracy of the foregoing information. Terms of sale or lease and availability are subject to change or withdrawal without notice.

3830 Ray Street, San Diego, CA 92104 | Phone (619) 491-0335 | Fax (619) 491-0696 | www.DuhsCommercial.com

AERIAL

S. Wells Avenue & Vassar Street, Reno, NV 89502



DEMOGRAPHICS 2015

TOTAL POPULATION

1 MILE: 19,677 3 MILES: 125,742 5 MILES: 231,172

AVG. HH INCOME

1 MILE: \$25,931 3 MILES: \$32,715 5 MILES: \$39,331

TRAFFIC COUNT 2014

WELLS AVE = 29,500 ADT

For more information about this property, please contact owner:

Craig Duhs
 (619) 540-1001
 Craig@DuhsCommercial.com
 CA License: 01086079



COMMERCIAL
 BROKERAGE • INVESTMENT • DEVELOPMENT

No warranty or representation is made to the accuracy of the foregoing information. Terms of sale or lease and availability are subject to change or withdrawal without notice.

3830 Ray Street, San Diego, CA 92104 | Phone (619) 491-0335 | Fax (619) 491-0696 | www.DuhsCommercial.com