

FOR LEASE

LUCKY PLAZA

321 WAKE AVENUE, EL CENTRO, CA 92243

AVAILABLE: 1,435 SF

- **RETAIL / OFFICE SPACE IN EXCELLENT CONDITION**
- **DYNAMIC FREEWAY INTERCHANGE OFF INTERSTATE 8**
- **EASY ACCESS & MONUMENT SIGNAGE AVAILABLE**
- **SURROUNDED BY: HOME DEPOT, STARBUCKS, IN-N-OUT, TACO BELL, PANDA EXPRESS, HABIT BURGER, AUTOZONE, 7-ELEVEN, MULTIPLE HOTELS, AND A PROPOSED NEW PANERA BREAD**



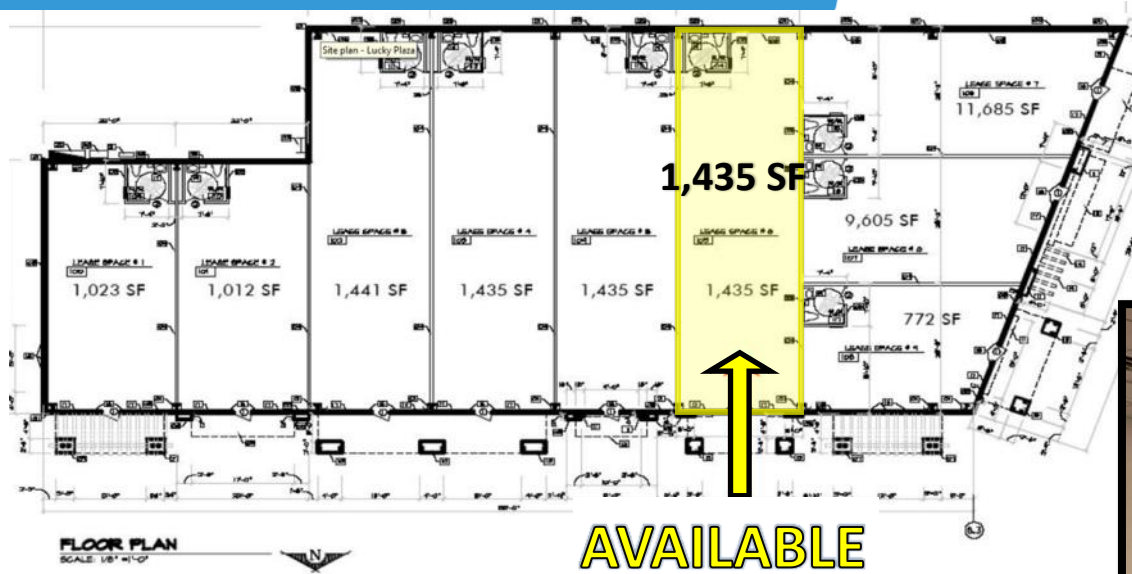
For more information about this property, please contact:

Rob Bloom
(619) 269-6076
Rob@DuhsCommercial.com
CA License: 01302163

No warranty or representation is made to the accuracy of the foregoing information. Terms of sale or lease and availability are subject to change or withdrawal without notice.
3919 30th Street 2ND Floor, San Diego, CA 92104 | Phone (619) 491-0335 | Fax (619) 491-0696 | www.DuhsCommercial.com

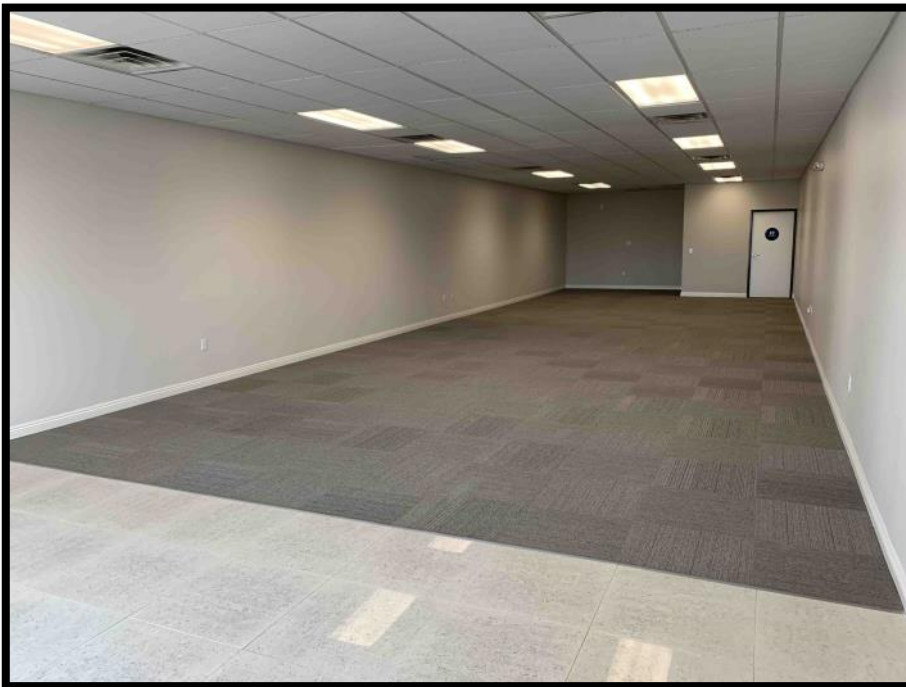
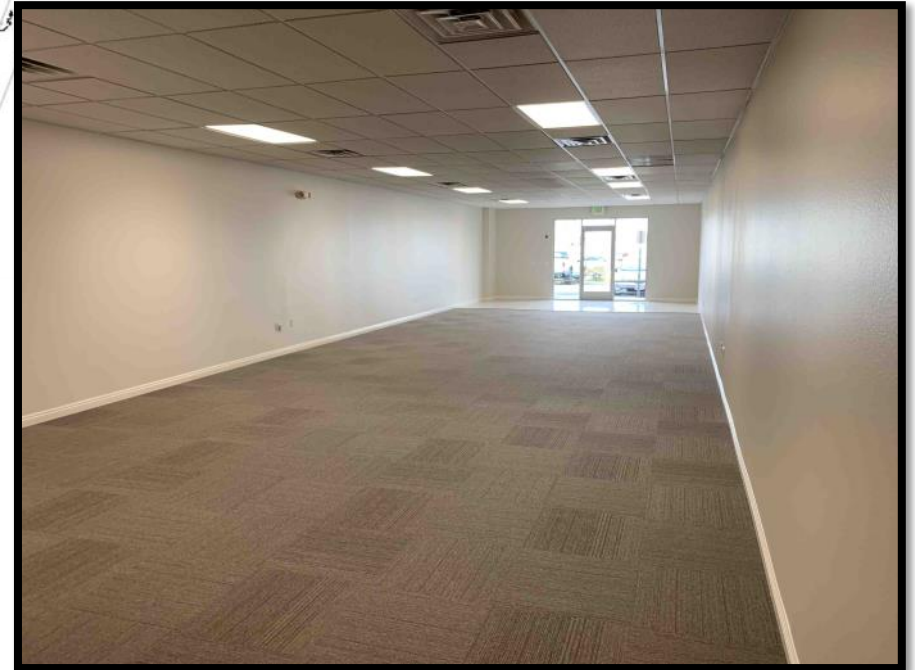


SITE PLAN



LUCKY PLAZA

321 WAKE AVENUE, EL CENTRO, CA 92243



No warranty or representation is made to the accuracy of the foregoing information. Terms of sale or lease and availability are subject to change or withdrawal without notice.
3919 30th Street 2ND Floor, San Diego, CA 92104 | Phone (619) 491-0335 | Fax (619) 491-0696 | www.DuhsCommercial.com



AERIAL

LUCKY PLAZA

321 WAKE AVENUE, EL CENTRO, CA 92243



No warranty or representation is made to the accuracy of the foregoing information. Terms of sale or lease and availability are subject to change or withdrawal without notice.
3919 30th Street 2nd Floor, San Diego, CA 92104 | Phone (619) 491-0335 | Fax (619) 491-0696 | www.DuhsCommercial.com

DUHS
COMMERCIAL
BROKERAGE • INVESTMENT • DEVELOPMENT