



Final End Cap Available

NEC of Euclid Ave. and Naranja Street, San Diego, CA

Austin Dias, MSRE

(619) 269-6077 • Austin@Duhscommercial.com

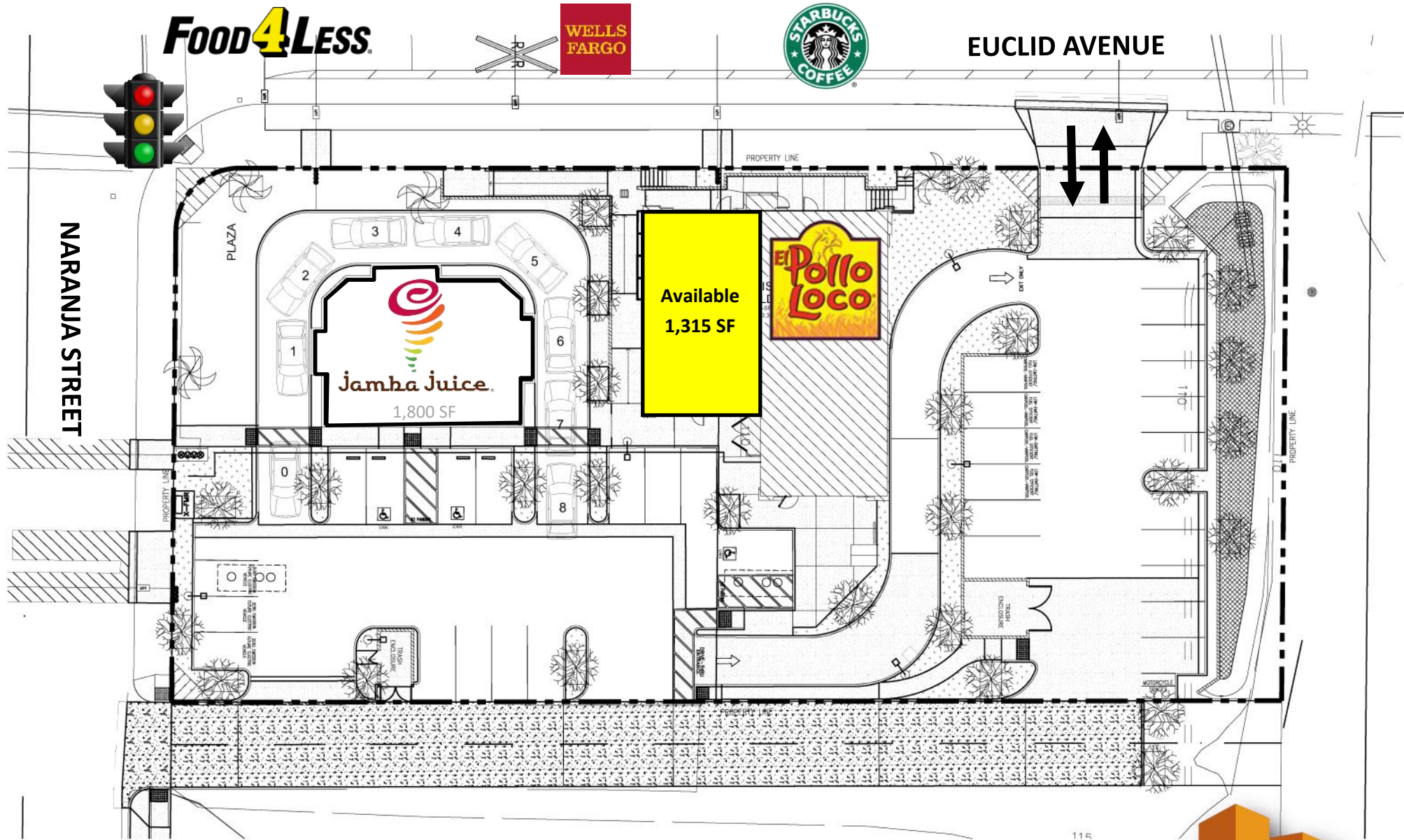
Craig Duhs

(619) 491-0612 • Craig@Duhscommercial.com



No warranty or representation is made to the accuracy of the foregoing information. Terms of sale or lease and availability are subject to change or withdrawal without notice.
 3830 Ray Street, San Diego, CA 92104 | Phone (619) 491-0335 | Fax (619) 491-0696 | www.DuhsCommercial.com

Site Plan



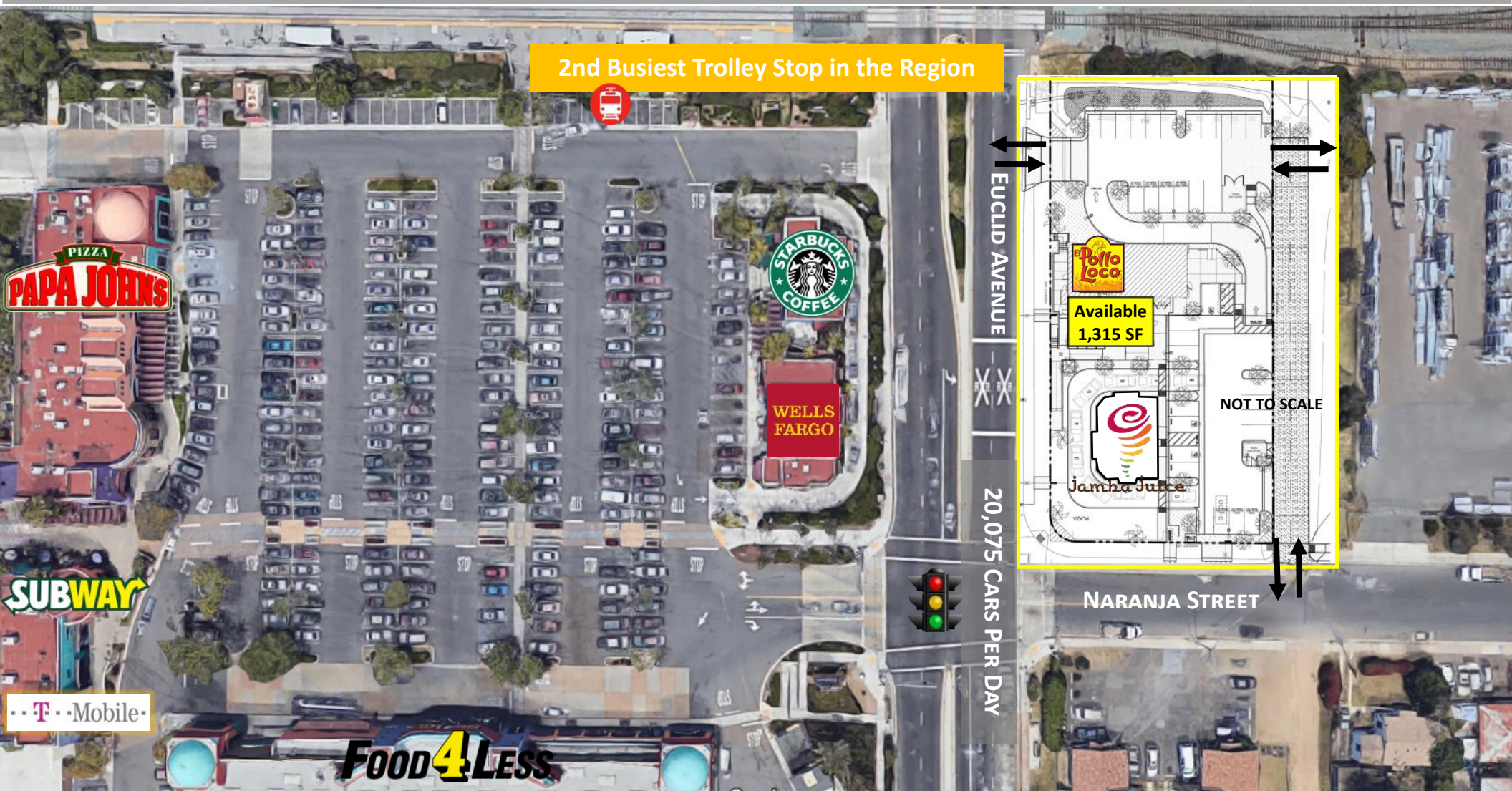
115



COMMERCIAL
BROKERAGE • INVESTMENT • DEVELOPMENT



Aerial



Aerial

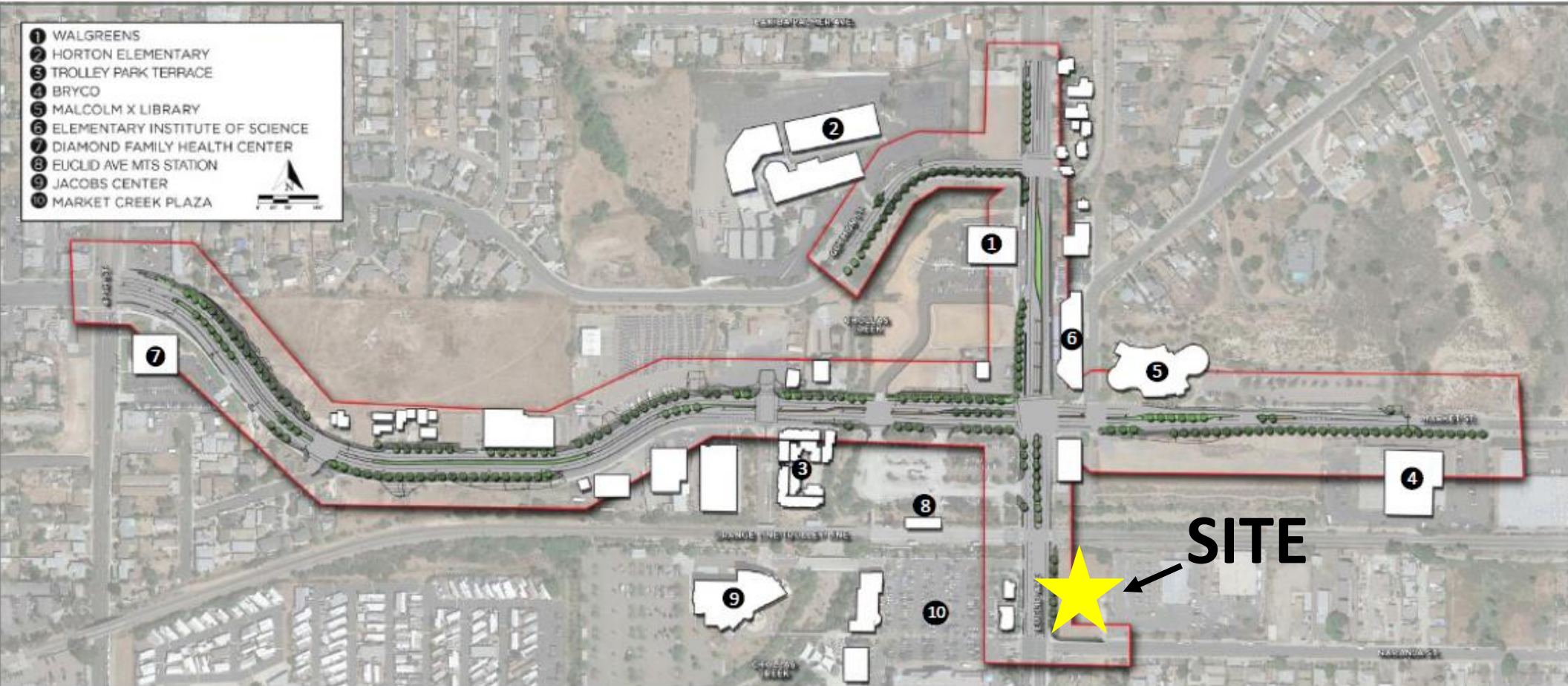


Aerial



Complete Streets Infrastructure Project

- 1 WALGREENS
- 2 HORTON ELEMENTARY
- 3 TROLLEY PARK TERRACE
- 4 BRYCO
- 5 MALCOLM X LIBRARY
- 6 ELEMENTARY INSTITUTE OF SCIENCE
- 7 DIAMOND FAMILY HEALTH CENTER
- 8 EUCLID AVE MTS STATION
- 9 JACOBS CENTER
- 10 MARKET CREEK PLAZA



- Wider landscaped sidewalks
- New landscaped medians
- New street lights and cycle tracks
- Stormwater treatment improvements



Area Densification Plans



Demographics



2022 TRAFFIC COUNTS
EUCLID & NARANJA: 20,075 ADT



2022 DAYTIME POPULATION
1 MILE: 5,867
3 MILE: 87,070
5 MILE: 252,384



AVERAGE HOUSEHOLD INCOME
ZIP CODE: 92114
\$64,181



2022 RESIDENTIAL POPULATION
1 MILE: 29,701
3 MILE: 276,118
5 MILE: 651,250



2022 HOUSEHOLDS
1 MILE: 7,869
3 MILE: 75,885
5 MILE: 223,228

