

FOR LEASE

Los Mercados at Calexico 2300 Imperial Ave, Calexico CA

AVAILABLE: Jr Anchor Space of 10,000 - 17,200 SF
Shop Space of 1,600 - 6,000 SF
Pad Site of 24,000 SF— Drive-Thru Potential

HIGHLIGHTS:

- ◆ Located Just a Block Away from a High Volume Walmart Supercenter Store—One of the Top Performing Stores in the Country
- ◆ Prominent Visibility & Large Pylon Sign Along Highway 111—the Main North/South Artery Leading to the Border
- ◆ Located Across from Mexicali, Mexico—the Capital of the state of Baja California with a Population of approx. 1.1 Million



For more information about this property, please contact:

ROB BLOOM

619-269-6076

Rob@DuhsCommercial.com

CA License # 01302163

TOM MORGAN, CCIM

619-491-0048

Tom@DuhsCommercial.com

CA License # 00456112

CRAIG DUHS

619-491-0612

Craig@DuhsCommercial.com

CA License # 01086079



COMMERCIAL

BROKERAGE • INVESTMENT • DEVELOPMENT

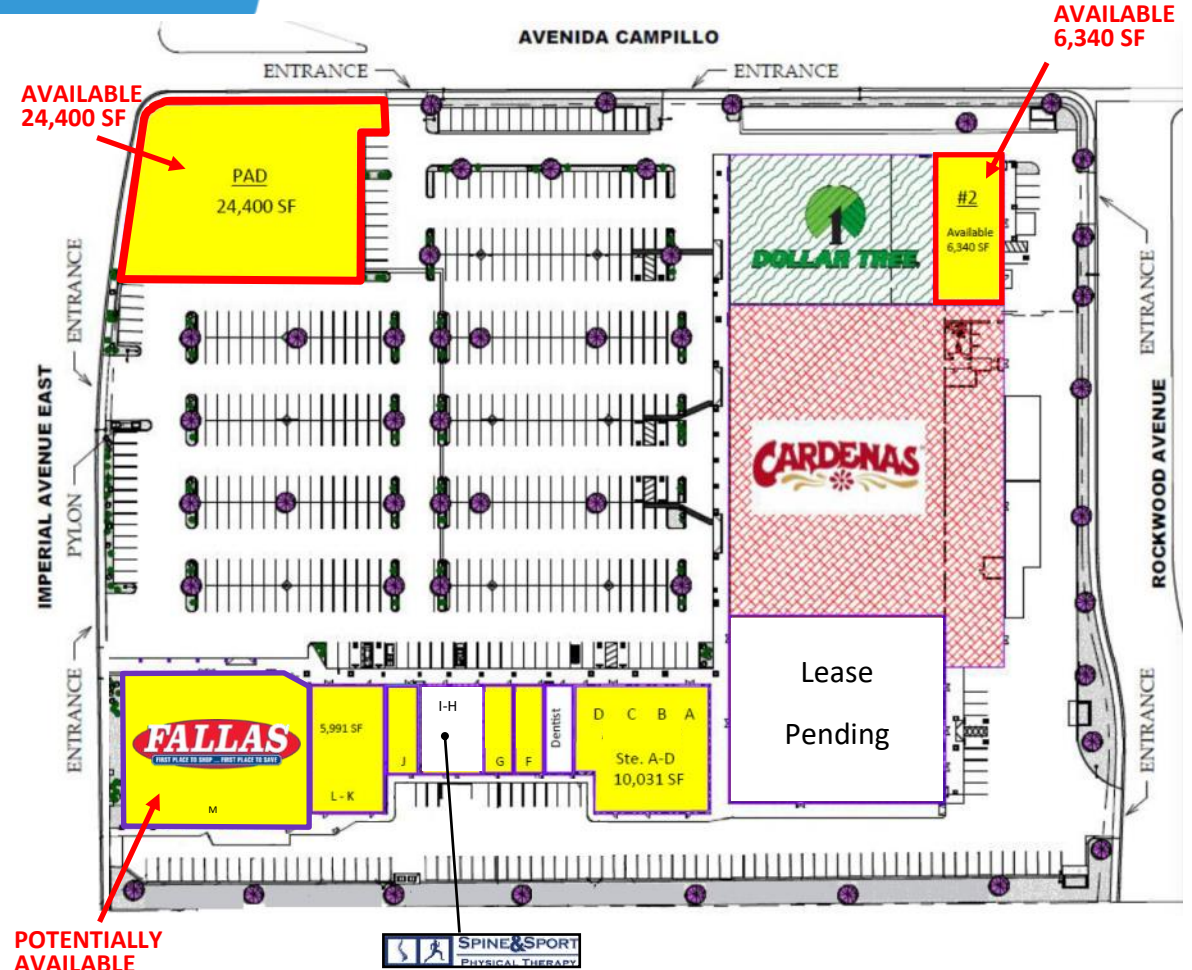


No warranty or representation is made to the accuracy of the foregoing information. Terms of sale or lease and availability are subject to change or withdrawal without notice.

3830 Ray Street, San Diego, CA 92104 | Phone (619) 491-0335 | Fax (619) 491-0696 | www.DuhsCommercial.com

SITE PLAN

Los Mercados at Calexico 2300 Imperial Ave, Calexico CA



SUITE	TENANT	SF	SUITE	TENANT	SF
A-D	AVAILABLE	10,031	PAD	AVAILABLE	24,400
F	AVAILABLE	1,656	2	AVAILABLE	6,340
G	AVAILABLE	1,711			
J	AVAILABLE	1,780			
K-L	AVAILABLE	5,991			
M	Potentially Available	17,200			



No warranty or representation is made to the accuracy of the foregoing information. Terms of sale or lease and availability are subject to change or withdrawal without notice.

3830 Ray Street, San Diego, CA 92104 | Phone (619) 491-0335 | Fax (619) 491-0696 | www.DuhsCommercial.com

PHOTOS

Los Mercados at Calexico 2300 Imperial Ave, Calexico CA



No warranty or representation is made to the accuracy of the foregoing information. Terms of sale or lease and availability are subject to change or withdrawal without notice.
3830 Ray Street, San Diego, CA 92104 | Phone (619) 491-0335 | Fax (619) 491-0696 | www.DuhsCommercial.com

COMMERCIAL
BROKERAGE • INVESTMENT • DEVELOPMENT

PROPERTY AERIAL

Los Mercados at Calexico
2300 Imperial Ave, Calexico CA



AERIAL

Los Mercados at Calexico 2300 Imperial Ave, Calexico CA



COMMERCIAL
BROKERAGE • INVESTMENT • DEVELOPMENT

AREA INFORMATION

Los Mercados at Calexico

2300 Imperial Ave, Calexico CA

Imperial County

The Imperial County has a population approx. 179,478 and has always been one of the most productive agricultural regions in the world.

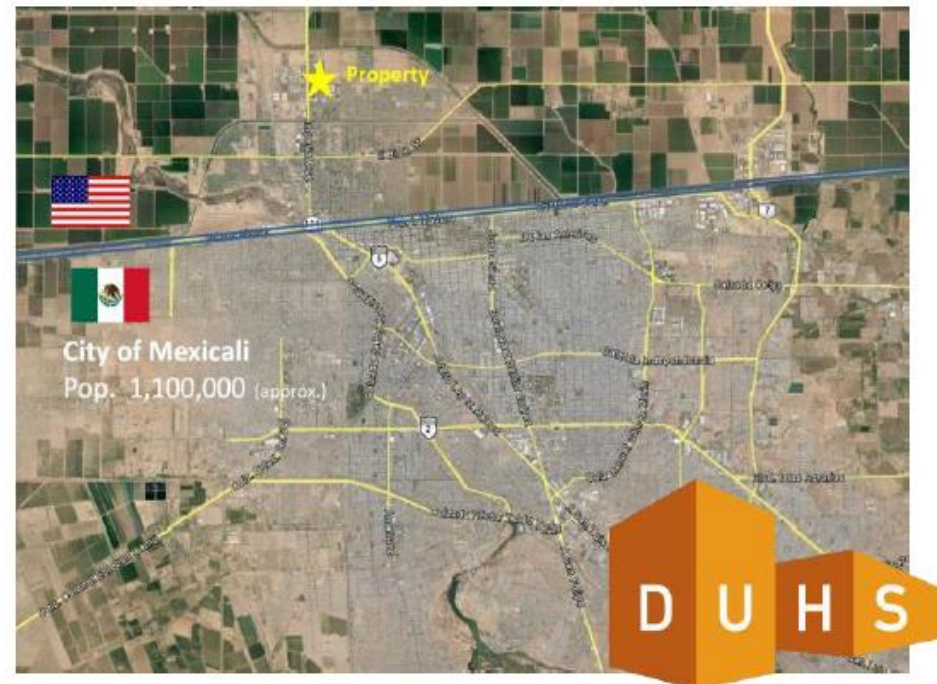
- ◆ Gross production value in excess of \$2.1 Billion in 2013 for agriculture.
- ◆ Over the last few decades, Imperial County has seen an influx of commercial activity and development with a solid presence and growth of other sectors, including:
 - ◇ Public Sector & Federal Government
 - ◇ Renewable Energy-- Geothermal/Solar/Wind
 - ◇ International Trade & Logistics
 - ◇ Manufacturing
 - ◇ Retail & Hospitality

Mexicali

The region benefits from its close proximity to the city of Mexicali, Mexico-- the capital of the State of Baja California.

- ◆ Population of over 1,100,000 in the Mexicali region.
- ◆ The City of Mexicali has one of the highest per capita incomes in the country along with some of the lowest unemployment and crime rates.
- ◆ The two vehicle/pedestrian ports of entry in Calexico combine for the 3rd busiest border crossing in the USA.
- ◆ There are over 200 maquiladoras that operate in Mexicali, including companies such as: Honeywell, Gulfstream, Cardinal Health, BF Goodrich's aerospace division, Mitsubishi, Daewoo, Kenworth, Black & Decker and Sony, among others.
- ◆ In total, the three ports of entry in Imperial County facilitated bi-national trade valued at over \$7.7 Billion in 2013. Calexico provides the only rail connection from California into Central Mexico and has direct freight rail routes to Los Angeles in the west and El Paso in the east.

MEXICO	
Mexicali (Urban Area)	±13 Mile (Mexico)
Population	1,102,342
USA	
Population	5 Mile (USA)
2017 Total Population:	48,347
2022 Population:	49,781
Pop Growth 2017-2022:	2.97%
Average Age:	34.70
Hispanic Origin:	96.75%
Households	
2017 Total Households:	12,575
HH Growth 2017-2022:	2.86%
Avg Household Inc:	\$52,819
Avg Household Size:	3.80
2017 Avg HH Vehicles:	2.00
Housing	
Median Home Value:	\$185,011
Median Year Built:	1993



No warranty or representation is made to the accuracy of the foregoing information. Terms of sale or lease and availability are subject to change or withdrawal without notice.

3830 Ray Street, San Diego, CA 92104 | Phone (619) 491-0335 | Fax (619) 491-0696 | www.DuhsCommercial.com

COMMERCIAL
BROKERAGE • INVESTMENT • DEVELOPMENT