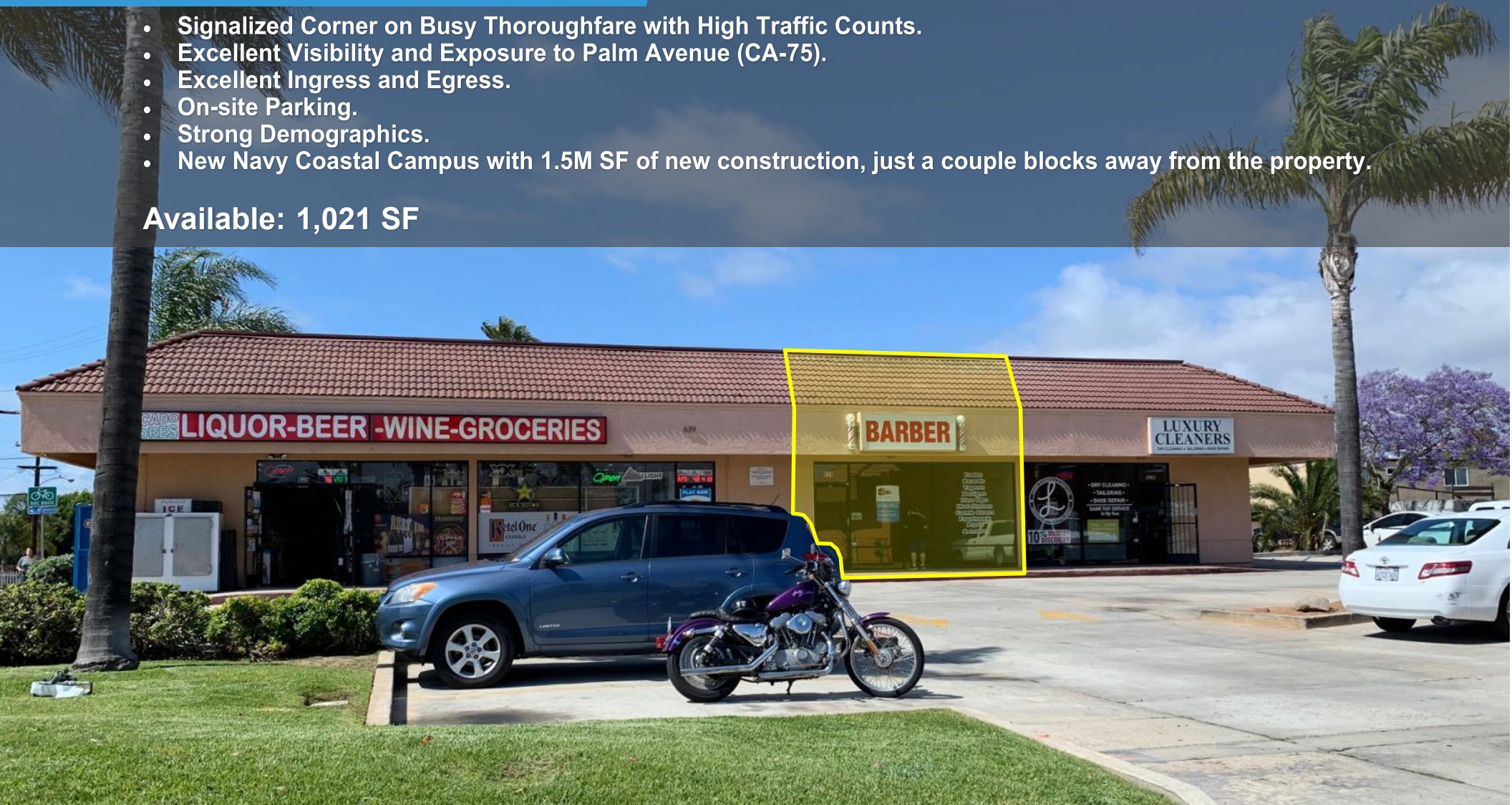


# FOR LEASE

639 7<sup>th</sup> Street, Imperial Beach, CA

- Signalized Corner on Busy Thoroughfare with High Traffic Counts.
- Excellent Visibility and Exposure to Palm Avenue (CA-75).
- Excellent Ingress and Egress.
- On-site Parking.
- Strong Demographics.
- New Navy Coastal Campus with 1.5M SF of new construction, just a couple blocks away from the property.

Available: 1,021 SF



For more information about this property, please contact:

**Anthony Acosta**  
(619) 491-0335 ext. 18  
Anthony@DuhsCommercial.com  
CA License: 01900150





# INTERIOR & EXTERIOR PHOTOS

639 7<sup>th</sup> Street, Imperial Beach, CA



For more information about this property, please contact:

**Anthony Acosta**  
(619) 491-0335 ext. 18  
Anthony@DuhsCommercial.com  
CA License: 01900150





# AERIAL

639 7<sup>th</sup> Street, Imperial Beach, CA



For more information about this property, please contact:

**Anthony Acosta**  
(619) 491-0335 ext. 18  
Anthony@DuhsCommercial.com  
CA License: 01900150



BROKERAGE • INVESTMENT • DEVELOPMENT  
SITE SOURCE  
REAL BROKER NETWORK