

# *Parker Executive Suites*



**FOR LEASE - BY OWNER**  
215 S WELLS AVENUE, RENO NV 98502

**SUITES JUST REMODELED!**  
**AVAILABLE SPRING OF 2025**



# FOR LEASE

## *Parker Executive Suites*

215 S Wells Avenue & 240-260 Park Street, Reno, NV 89502

### AVAILABLE 78 SF - 250 SF

#### Amenities

- Conference Room
- Kitchenette
- Wi-Fi

#### Highlights

- Great Visibility
- Signalized Intersection
- Densely Populated
- Excellent Traffic Counts
- Close to I-80 & I-580 Freeways

#### Traffic Counts

S. Wells Ave: 19,802 ADT  
Ryland St: 10,581 ADT



**Craig Duhs**

(619) 491-0612 | [Craig@DuhsCommercial.com](mailto:Craig@DuhsCommercial.com)

CA Lic: 01086079



No warranty or representation is made to the accuracy of the foregoing information. Terms of sale or lease and availability are subject to change or withdrawal without notice.

**SITE SOURCE**

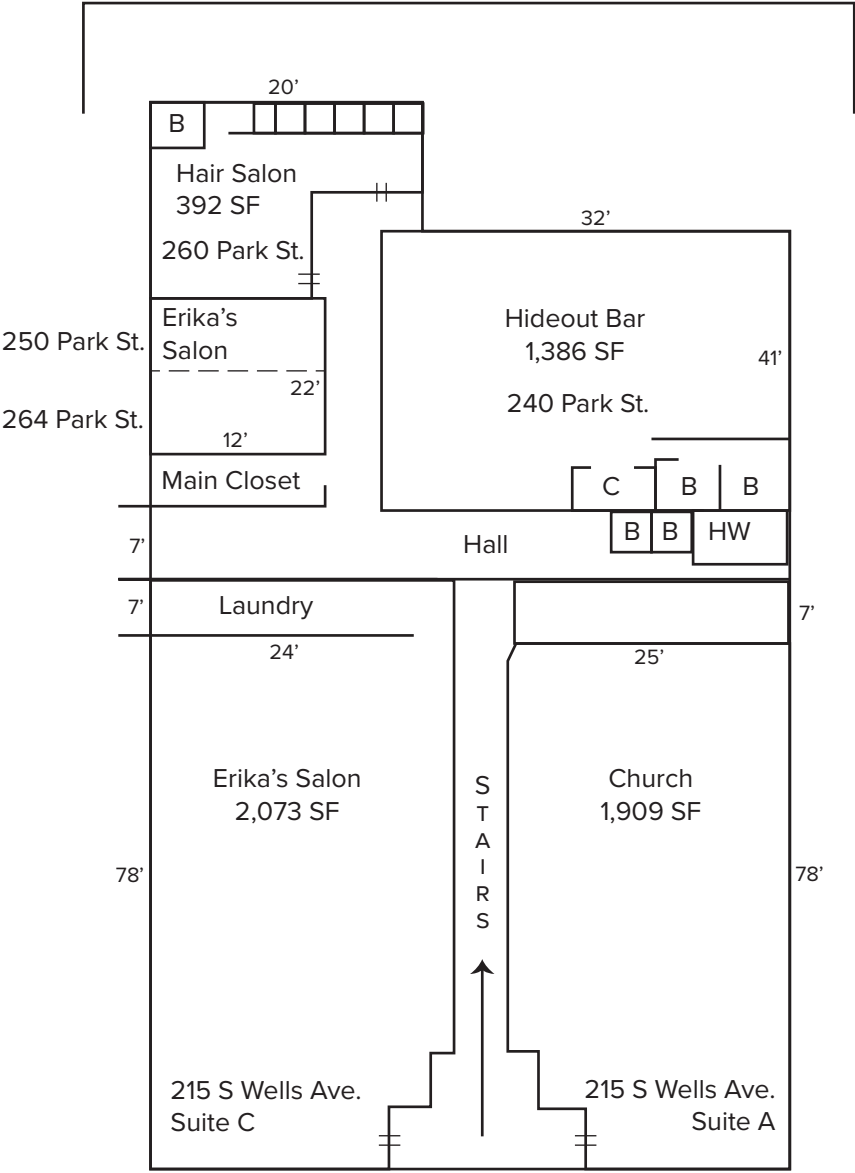
# FLOOR PLAN

Available: 78 SF - 250 SF

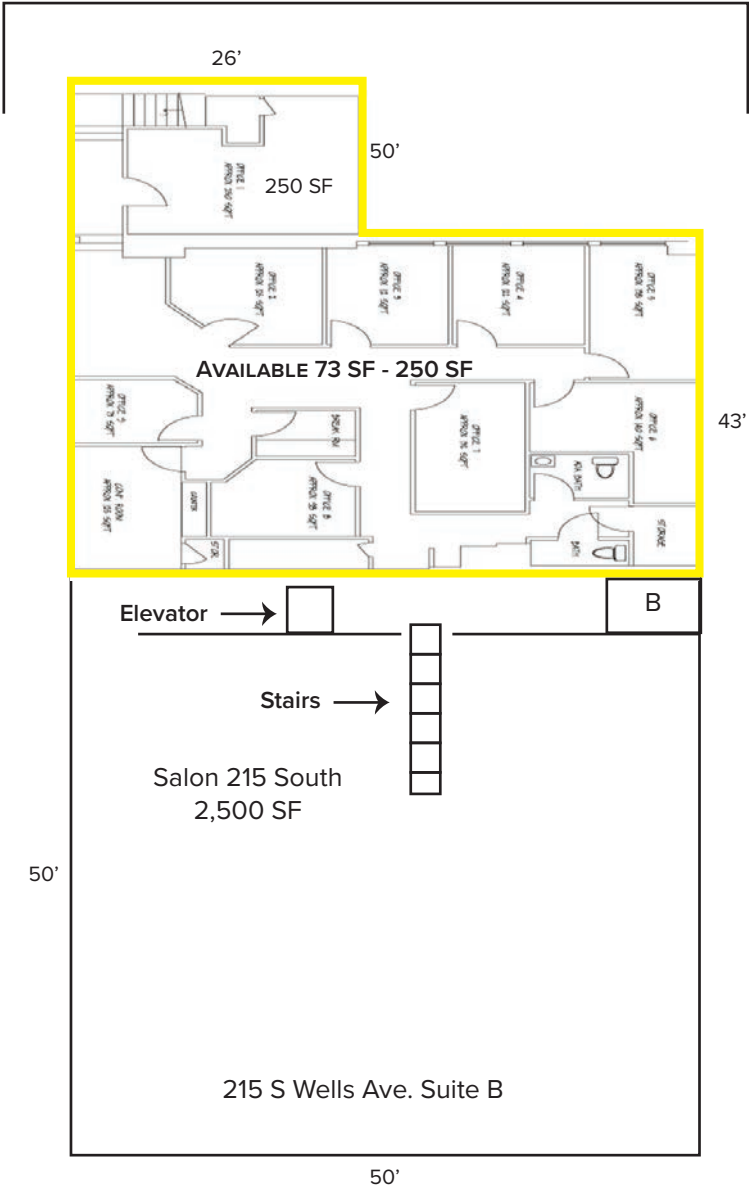
*Parker Executive Suites*

215 S Wells Avenue & 240-260 Park Street, Reno, NV 89502

## First Floor



## Second Floor



S. Wells Avenue

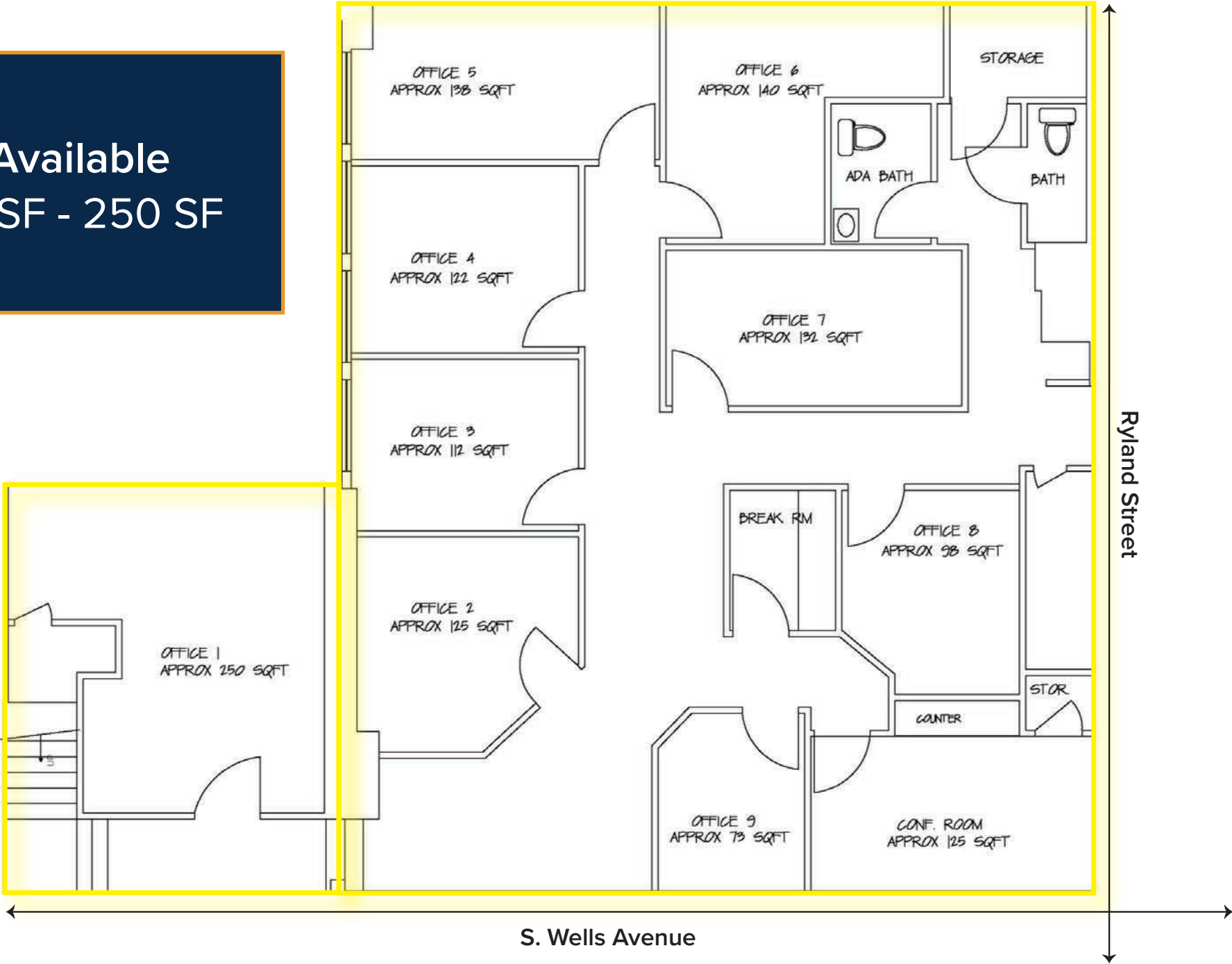
Ryland Street

FLOOR PLAN

Parker Executive Suites

215 S Wells Avenue & 240-260 Park Street, Reno, NV 89502

Available  
78 SF - 250 SF





# AERIAL

Available: 78 SF - 250 SF

## *Parker Executive Suites*

215 S Wells Avenue & 240-260 Park Street, Reno, NV 89502



**Craig Duhs**

(619) 491-0612 | [Craig@DuhsCommercial.com](mailto:Craig@DuhsCommercial.com)

CA Lic: 01086079



**COMMERCIAL**  
BROKERAGE • INVESTMENT • DEVELOPMENT

SITE SOURCE

No warranty or representation is made to the accuracy of the foregoing information. Terms of sale or lease and availability are subject to change or withdrawal without notice.



# AERIAL

Available: 78 SF - 250 SF

## Parker Executive Suites

215 S Wells Avenue & 240-260 Park Street, Reno, NV 89502



Craig Duhs

(619) 491-0612 | [Craig@DuhsCommercial.com](mailto:Craig@DuhsCommercial.com)

CA Lic: 01086079

No warranty or representation is made to the accuracy of the foregoing information. Terms of sale or lease and availability are subject to change or withdrawal without notice.



SITE SOURCE



# Parker Executive Suites



*For more information, please contact:*

**Craig Duhs:**

Craig@DuhsCommercial.com

CA Lic: 01086079

(619) 491-0612



**FOR LEASE - BY OWNER**  
**215 S WELLS AVENUE, RENO NV 98502**

**SUITES JUST REMODELED!**  
**AVAILABLE SPRING OF 2025**