

# Salon Suites For Lease by owner

705 S. WELLS AVE., RENO, NV 89502

STUDIO  
705

- From 103 SF - 848 SF
- Fully Built Salon Spaces with Sinks
- Parking in back
- Great Visibility on Wells Ave.

**Craig Duhs**

Craig@duhscommercial.com

619.491.0612

CA Lic. # 01086079

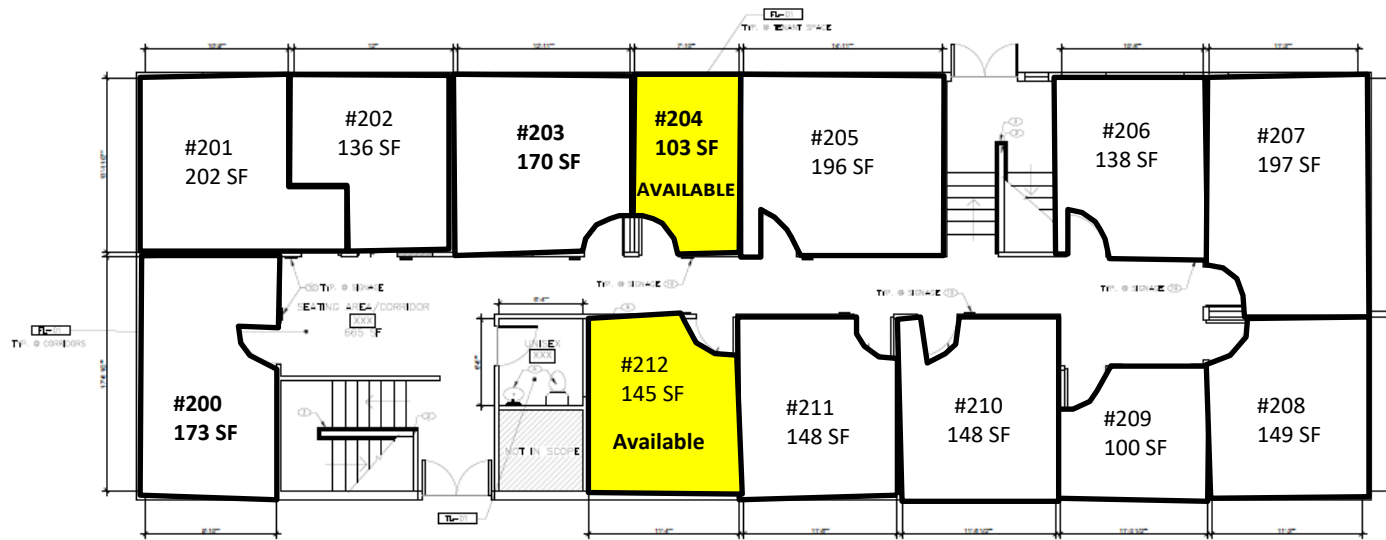


No warranty or representation is made to the accuracy of the foregoing information. Terms of sale or lease and availability are subject to change or withdrawal without notice.  
3830 Ray Street, San Diego, CA 92104 | Phone (619) 491-0335 | Fax (619) 491-0696 | www.DuhsCommercial.com

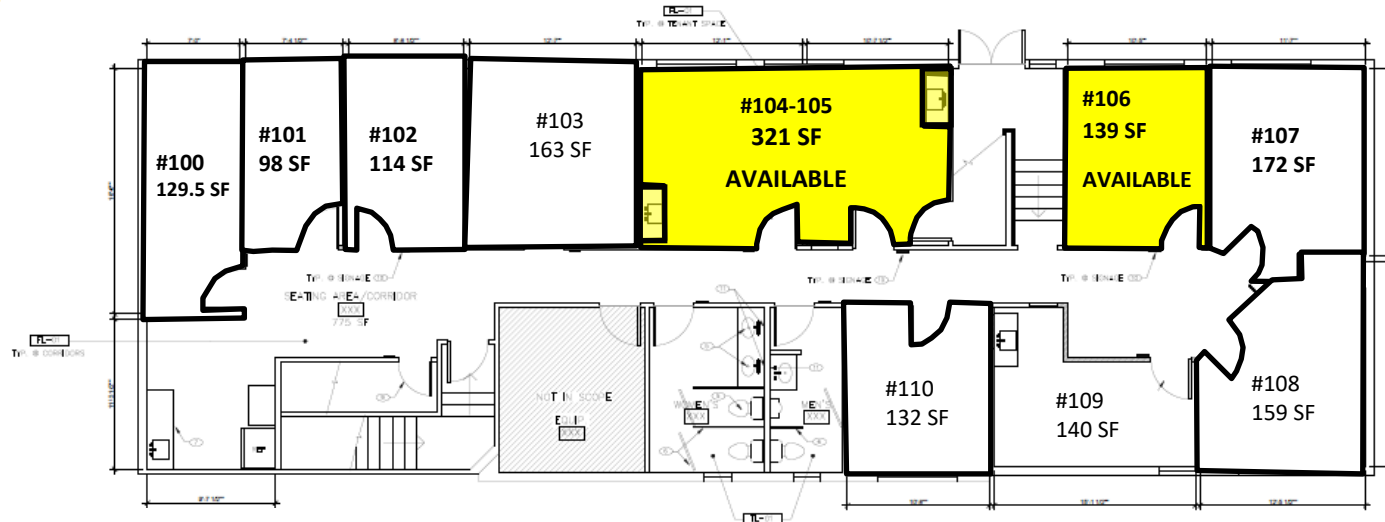


# FLOOR PLAN

705 S. WELLS AVE., RENO, NV 89502



2 UPPER LEVEL FLOOR PLAN



1 LOWER LEVEL FLOOR PLAN

**Craig Duhs**

[Craig@duhscommercial.com](mailto:Craig@duhscommercial.com)

619.491.0612

CA Lic. # 01086079



# PHOTOS

705 S. WELLS AVE., RENO, NV 89502



**Craig Duhs**

Craig@duhscommercial.com

619.491.0612

CA Lic. # 01086079



No warranty or representation is made to the accuracy of the foregoing information. Terms of sale or lease and availability are subject to change or withdrawal without notice.  
3830 Ray Street, San Diego, CA 92104 | Phone (619) 491-0335 | Fax (619) 491-0696 | www.DuhsCommercial.com



# PHOTOS

705 S. WELLS AVE., RENO, NV 89502



**Craig Duhs**

[Craig@duhscommercial.com](mailto:Craig@duhscommercial.com)

619.491.0612

CA Lic. # 01086079



No warranty or representation is made to the accuracy of the foregoing information. Terms of sale or lease and availability are subject to change or withdrawal without notice.  
3830 Ray Street, San Diego, CA 92104 | Phone (619) 491-0335 | Fax (619) 491-0696 | [www.DuhsCommercial.com](http://www.DuhsCommercial.com)



# PHOTOS

705 S. WELLS AVE., RENO, NV 89502



**Craig Duhs**

Craig@duhscommercial.com

619.491.0612

CA Lic. # 01086079



No warranty or representation is made to the accuracy of the foregoing information. Terms of sale or lease and availability are subject to change or withdrawal without notice.  
3830 Ray Street, San Diego, CA 92104 | Phone (619) 491-0335 | Fax (619) 491-0696 | www.DuhsCommercial.com



# PHOTOS

705 S. WELLS AVE., RENO, NV 89502



**Craig Duhs**

Craig@duhscommercial.com

619.491.0612

CA Lic. # 01086079



No warranty or representation is made to the accuracy of the foregoing information. Terms of sale or lease and availability are subject to change or withdrawal without notice.  
3830 Ray Street, San Diego, CA 92104 | Phone (619) 491-0335 | Fax (619) 491-0696 | www.DuhsCommercial.com



# EXTERIOR PHOTOS

705 S. WELLS AVE., RENO, NV 89502



**Craig Duhs**

Craig@duhscommercial.com

619.491.0612

CA Lic. # 01086079



No warranty or representation is made to the accuracy of the foregoing information. Terms of sale or lease and availability are subject to change or withdrawal without notice.  
3830 Ray Street, San Diego, CA 92104 | Phone (619) 491-0335 | Fax (619) 491-0696 | www.DuhsCommercial.com



# EXTERIOR PHOTOS

705 S. WELLS AVE., RENO, NV 89502



**Craig Duhs**

Craig@duhscommercial.com

619.491.0612

CA Lic. # 01086079



No warranty or representation is made to the accuracy of the foregoing information. Terms of sale or lease and availability are subject to change or withdrawal without notice.  
3830 Ray Street, San Diego, CA 92104 | Phone (619) 491-0335 | Fax (619) 491-0696 | www.DuhsCommercial.com





# UPSTAIRS PHOTOS

705 S. WELLS AVE., RENO, NV 89502



**Craig Duhs**

Craig@duhscommercial.com

619.491.0612

CA Lic. # 01086079



No warranty or representation is made to the accuracy of the foregoing information. Terms of sale or lease and availability are subject to change or withdrawal without notice.  
3830 Ray Street, San Diego, CA 92104 | Phone (619) 491-0335 | Fax (619) 491-0696 | www.DuhsCommercial.com



# PHOTOS

705 S. WELLS AVE., RENO, NV 89502



**Craig Duhs**

Craig@duhscommercial.com

619.491.0612

CA Lic. # 01086079



No warranty or representation is made to the accuracy of the foregoing information. Terms of sale or lease and availability are subject to change or withdrawal without notice.  
3830 Ray Street, San Diego, CA 92104 | Phone (619) 491-0335 | Fax (619) 491-0696 | www.DuhsCommercial.com



# PHOTOS

705 S. WELLS AVE., RENO, NV 89502



**Craig Duhs**

Craig@duhscommercial.com

619.491.0612

CA Lic. # 01086079



No warranty or representation is made to the accuracy of the foregoing information. Terms of sale or lease and availability are subject to change or withdrawal without notice.  
3830 Ray Street, San Diego, CA 92104 | Phone (619) 491-0335 | Fax (619) 491-0696 | www.DuhsCommercial.com



# UPSTAIRS PHOTOS

705 S. WELLS AVE., RENO, NV 89502



**Craig Duhs**

Craig@duhscommercial.com

619.491.0612

CA Lic. # 01086079



No warranty or representation is made to the accuracy of the foregoing information. Terms of sale or lease and availability are subject to change or withdrawal without notice.  
3830 Ray Street, San Diego, CA 92104 | Phone (619) 491-0335 | Fax (619) 491-0696 | www.DuhsCommercial.com



# DOWNSTAIRS PHOTOS

705 S. WELLS AVE., RENO, NV 89502



**Craig Duhs**

Craig@duhscommercial.com

619.491.0612

CA Lic. # 01086079



No warranty or representation is made to the accuracy of the foregoing information. Terms of sale or lease and availability are subject to change or withdrawal without notice.  
3830 Ray Street, San Diego, CA 92104 | Phone (619) 491-0335 | Fax (619) 491-0696 | www.DuhsCommercial.com



# DOWNSTAIRS PHOTOS

705 S. WELLS AVE., RENO, NV 89502



**Craig Duhs**

Craig@duhscommercial.com

619.491.0612

CA Lic. # 01086079



No warranty or representation is made to the accuracy of the foregoing information. Terms of sale or lease and availability are subject to change or withdrawal without notice.  
3830 Ray Street, San Diego, CA 92104 | Phone (619) 491-0335 | Fax (619) 491-0696 | www.DuhsCommercial.com



# DOWNSTAIRS PHOTOS

705 S. WELLS AVE., RENO, NV 89502



**Craig Duhs**  
Craig@duhscommercial.com  
619.491.0612  
CA Lic. # 01086079



No warranty or representation is made to the accuracy of the foregoing information. Terms of sale or lease and availability are subject to change or withdrawal without notice.  
3830 Ray Street, San Diego, CA 92104 | Phone (619) 491-0335 | Fax (619) 491-0696 | www.DuhsCommercial.com



# BATHROOM PHOTOS

705 S. WELLS AVE., RENO, NV 89502



**Craig Duhs**

Craig@duhscommercial.com

619.491.0612

CA Lic. # 01086079



No warranty or representation is made to the accuracy of the foregoing information. Terms of sale or lease and availability are subject to change or withdrawal without notice.  
3830 Ray Street, San Diego, CA 92104 | Phone (619) 491-0335 | Fax (619) 491-0696 | www.DuhsCommercial.com





# BATHROOM PHOTOS

705 S. WELLS AVE., RENO, NV 89502



**Craig Duhs**

Craig@duhscommercial.com

619.491.0612

CA Lic. # 01086079



No warranty or representation is made to the accuracy of the foregoing information. Terms of sale or lease and availability are subject to change or withdrawal without notice.  
3830 Ray Street, San Diego, CA 92104 | Phone (619) 491-0335 | Fax (619) 491-0696 | www.DuhsCommercial.com



# AERIAL

705 S. WELLS AVE., RENO, NV 89502



DEMOGRAPHICS 2022		
TOTAL POPULATION		
1 MILE: 23,716	3 MILES: 129,320	5 MILES: 244,485
AVG. HH INCOME		
1 MILE: \$61,877	3 MILES: \$69,321	5 MILES: \$77,058
TRAFFIC COUNT 2022		
WELLS AVE = 12,887 ADT		

**Craig Duhs**

Craig@duhscommercial.com

619.491.0612

CA Lic. # 01086079

