

Salon Suites For Lease by owner

705 S. WELLS AVE., RENO, NV 89502

STUDIO
705

- From 98 SF—202 SF
- Fully built salon spaces with sinks
- Parking in back
- Great visibility on Wells Ave.

Craig Duhs

Craig@duhscommercial.com

619.491.0612

CA Lic. # 01086079

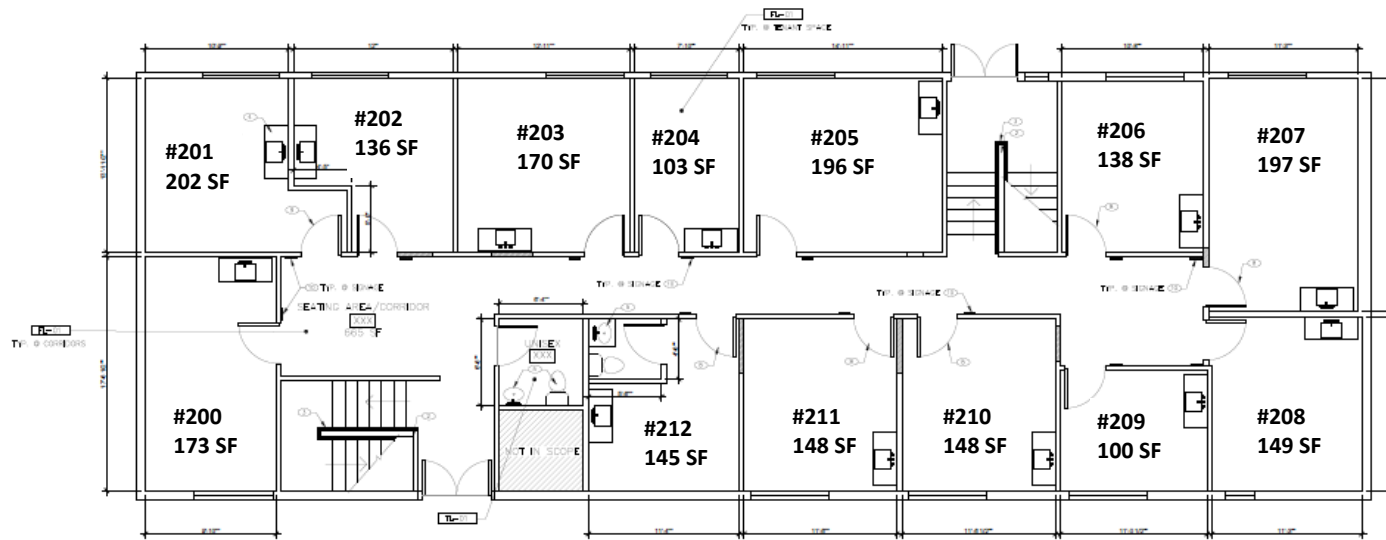


No warranty or representation is made to the accuracy of the foregoing information. Terms of sale or lease and availability are subject to change or withdrawal without notice.
3830 Ray Street, San Diego, CA 92104 | Phone (619) 491-0335 | Fax (619) 491-0696 | www.DuhsCommercial.com

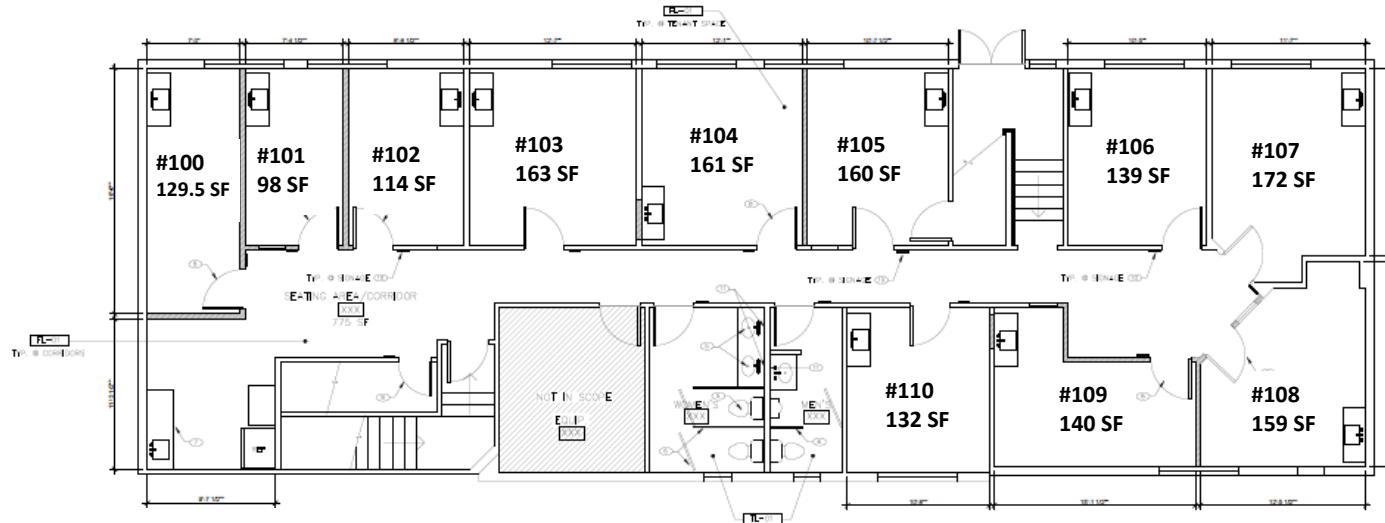


FLOOR PLAN

705 S. WELLS AVE., RENO, NV 89502



2 UPPER LEVEL FLOOR PLAN



1 LOWER LEVEL FLOOR PLAN

Craig Duhs

Craig@duhscommercial.com

619.491.0612

CA Lic. # 01086079



PHOTOS

705 S. WELLS AVE., RENO, NV 89502



Craig Duhs

Craig@duhscommercial.com

619.491.0612

CA Lic. # 01086079



No warranty or representation is made to the accuracy of the foregoing information. Terms of sale or lease and availability are subject to change or withdrawal without notice.
3830 Ray Street, San Diego, CA 92104 | Phone (619) 491-0335 | Fax (619) 491-0696 | www.DuhsCommercial.com



PHOTOS

705 S. WELLS AVE., RENO, NV 89502



Craig Duhs

Craig@duhscommercial.com

619.491.0612

CA Lic. # 01086079



No warranty or representation is made to the accuracy of the foregoing information. Terms of sale or lease and availability are subject to change or withdrawal without notice.
3830 Ray Street, San Diego, CA 92104 | Phone (619) 491-0335 | Fax (619) 491-0696 | www.DuhsCommercial.com



PHOTOS

705 S. WELLS AVE., RENO, NV 89502



Craig Duhs

Craig@duhscommercial.com

619.491.0612

CA Lic. # 01086079



No warranty or representation is made to the accuracy of the foregoing information. Terms of sale or lease and availability are subject to change or withdrawal without notice.
3830 Ray Street, San Diego, CA 92104 | Phone (619) 491-0335 | Fax (619) 491-0696 | www.DuhsCommercial.com



PHOTOS

705 S. WELLS AVE., RENO, NV 89502



Craig Duhs

Craig@duhscommercial.com

619.491.0612

CA Lic. # 01086079



No warranty or representation is made to the accuracy of the foregoing information. Terms of sale or lease and availability are subject to change or withdrawal without notice.
3830 Ray Street, San Diego, CA 92104 | Phone (619) 491-0335 | Fax (619) 491-0696 | www.DuhsCommercial.com



EXTERIOR PHOTOS

705 S. WELLS AVE., RENO, NV 89502



Craig Duhs

Craig@duhscommercial.com

619.491.0612

CA Lic. # 01086079



No warranty or representation is made to the accuracy of the foregoing information. Terms of sale or lease and availability are subject to change or withdrawal without notice.
3830 Ray Street, San Diego, CA 92104 | Phone (619) 491-0335 | Fax (619) 491-0696 | www.DuhsCommercial.com



EXTERIOR PHOTOS

705 S. WELLS AVE., RENO, NV 89502



Craig Duhs

Craig@duhscommercial.com

619.491.0612

CA Lic. # 01086079



No warranty or representation is made to the accuracy of the foregoing information. Terms of sale or lease and availability are subject to change or withdrawal without notice.
3830 Ray Street, San Diego, CA 92104 | Phone (619) 491-0335 | Fax (619) 491-0696 | www.DuhsCommercial.com



UPSTAIRS PHOTOS

705 S. WELLS AVE., RENO, NV 89502



Craig Duhs

Craig@duhscommercial.com

619.491.0612

CA Lic. # 01086079



No warranty or representation is made to the accuracy of the foregoing information. Terms of sale or lease and availability are subject to change or withdrawal without notice.
3830 Ray Street, San Diego, CA 92104 | Phone (619) 491-0335 | Fax (619) 491-0696 | www.DuhsCommercial.com



PHOTOS

705 S. WELLS AVE., RENO, NV 89502



Craig Duhs
Craig@duhscommercial.com
619.491.0612
CA Lic. # 01086079



No warranty or representation is made to the accuracy of the foregoing information. Terms of sale or lease and availability are subject to change or withdrawal without notice.
3830 Ray Street, San Diego, CA 92104 | Phone (619) 491-0335 | Fax (619) 491-0696 | www.DuhsCommercial.com



PHOTOS

705 S. WELLS AVE., RENO, NV 89502



Craig Duhs

Craig@duhscommercial.com

619.491.0612

CA Lic. # 01086079



No warranty or representation is made to the accuracy of the foregoing information. Terms of sale or lease and availability are subject to change or withdrawal without notice.
3830 Ray Street, San Diego, CA 92104 | Phone (619) 491-0335 | Fax (619) 491-0696 | www.DuhsCommercial.com



UPSTAIRS PHOTOS

705 S. WELLS AVE., RENO, NV 89502



Craig Duhs

Craig@duhscommercial.com

619.491.0612

CA Lic. # 01086079



No warranty or representation is made to the accuracy of the foregoing information. Terms of sale or lease and availability are subject to change or withdrawal without notice.
3830 Ray Street, San Diego, CA 92104 | Phone (619) 491-0335 | Fax (619) 491-0696 | www.DuhsCommercial.com



DOWNSTAIRS PHOTOS

705 S. WELLS AVE., RENO, NV 89502



Craig Duhs

Craig@duhscommercial.com

619.491.0612

CA Lic. # 01086079



No warranty or representation is made to the accuracy of the foregoing information. Terms of sale or lease and availability are subject to change or withdrawal without notice.
3830 Ray Street, San Diego, CA 92104 | Phone (619) 491-0335 | Fax (619) 491-0696 | www.DuhsCommercial.com



DOWNSTAIRS PHOTOS

705 S. WELLS AVE., RENO, NV 89502



Craig Duhs

Craig@duhscommercial.com

619.491.0612

CA Lic. # 01086079



No warranty or representation is made to the accuracy of the foregoing information. Terms of sale or lease and availability are subject to change or withdrawal without notice.
3830 Ray Street, San Diego, CA 92104 | Phone (619) 491-0335 | Fax (619) 491-0696 | www.DuhsCommercial.com



DOWNSTAIRS PHOTOS

705 S. WELLS AVE., RENO, NV 89502



Craig Duhs

Craig@duhscommercial.com

619.491.0612

CA Lic. # 01086079

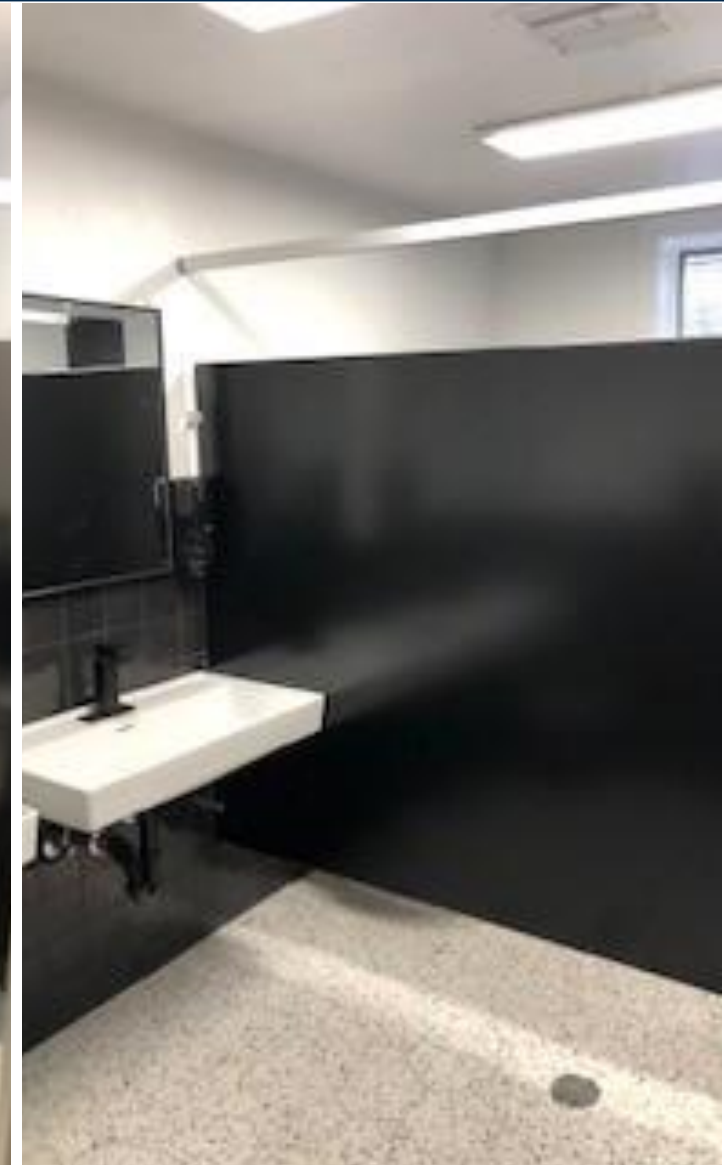


No warranty or representation is made to the accuracy of the foregoing information. Terms of sale or lease and availability are subject to change or withdrawal without notice.
3830 Ray Street, San Diego, CA 92104 | Phone (619) 491-0335 | Fax (619) 491-0696 | www.DuhsCommercial.com



BATHROOM PHOTOS

705 S. WELLS AVE., RENO, NV 89502



Craig Duhs
Craig@duhscommercial.com
619.491.0612
CA Lic. # 01086079



No warranty or representation is made to the accuracy of the foregoing information. Terms of sale or lease and availability are subject to change or withdrawal without notice.
3830 Ray Street, San Diego, CA 92104 | Phone (619) 491-0335 | Fax (619) 491-0696 | www.DuhsCommercial.com



BATHROOM PHOTOS

705 S. WELLS AVE., RENO, NV 89502



Craig Duhs

Craig@duhscommercial.com

619.491.0612

CA Lic. # 01086079



No warranty or representation is made to the accuracy of the foregoing information. Terms of sale or lease and availability are subject to change or withdrawal without notice.
3830 Ray Street, San Diego, CA 92104 | Phone (619) 491-0335 | Fax (619) 491-0696 | www.DuhsCommercial.com



AERIAL

705 S. WELLS AVE., RENO, NV 89502



| DEMOGRAPHICS 2022 | | |
|---------------------------|-------------------|-------------------|
| <u>TOTAL POPULATION</u> | | |
| 1 MILE: 23,716 | 3 MILES: 129,320 | 5 MILES: 244,485 |
| <u>AVG. HH INCOME</u> | | |
| 1 MILE: \$61,877 | 3 MILES: \$69,321 | 5 MILES: \$77,058 |
| <u>TRAFFIC COUNT 2022</u> | | |
| WELLS AVE = 12,887 ADT | | |

Craig Duhs

Craig@duhscommercial.com

619.491.0612

CA Lic. # 01086079

