

# *Studio 705 - Salon Suites*

**For Lease By Owner**



**705 S. Wells Avenue, Reno, NV 89502**

- 1 Suite Available - 148 SF
- Fully Built Salon Spaces with Sinks
- Parking in the Back
- Great Visibility on Wells Avenue

**Craig Duhs | [Craig@DuhsCommercial.com](mailto:Craig@DuhsCommercial.com) | 619-491-0612**

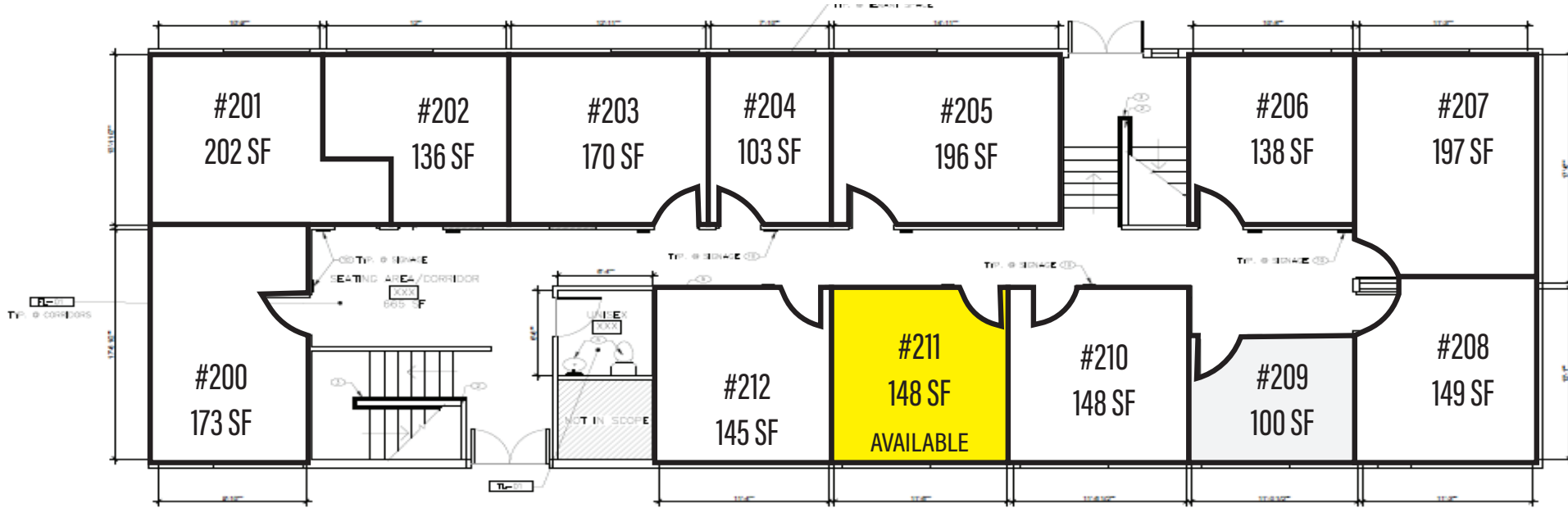
**Partner | CA Lic: 01086079**



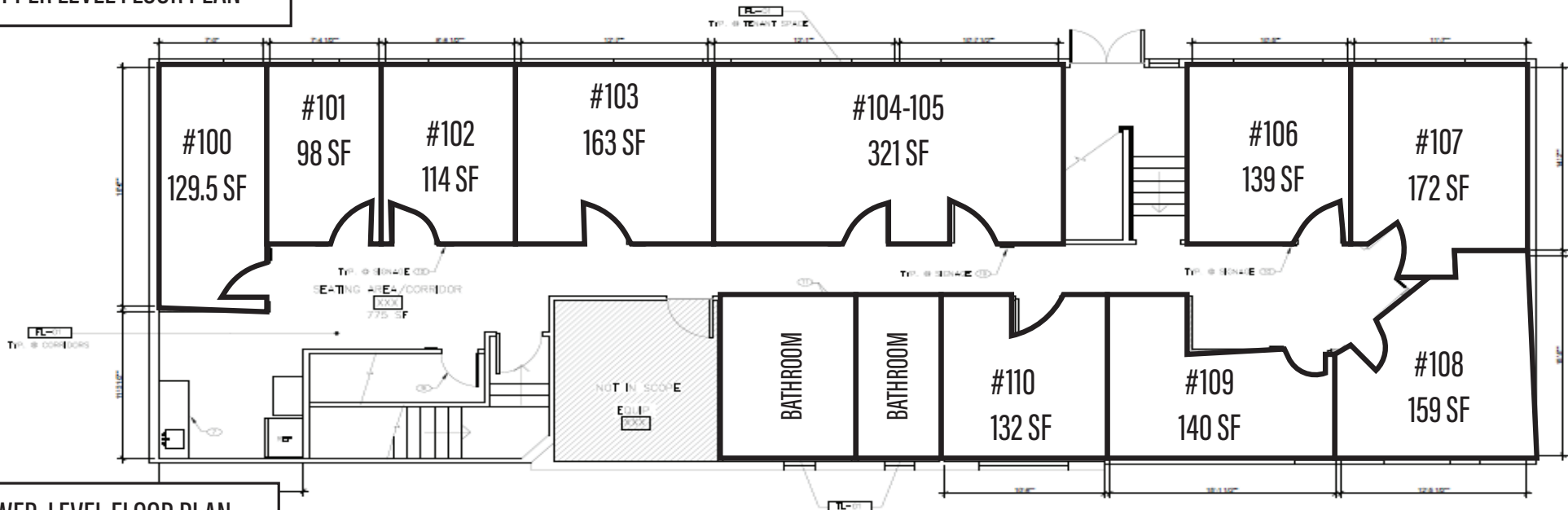
No warranty or representation is made to the accuracy of the foregoing information. Terms of sale or lease and availability are subject to change or withdrawal without notice.

# Studio 705 - Salon Suites

## Floor Plan



2 - UPPER LEVEL FLOOR PLAN



1 - LOWER LEVEL FLOOR PLAN

# *Studio 705 - Salon Suites*

## **Exterior Photos**



# *Studio 705 - Salon Suites*

## **Exterior Photos**



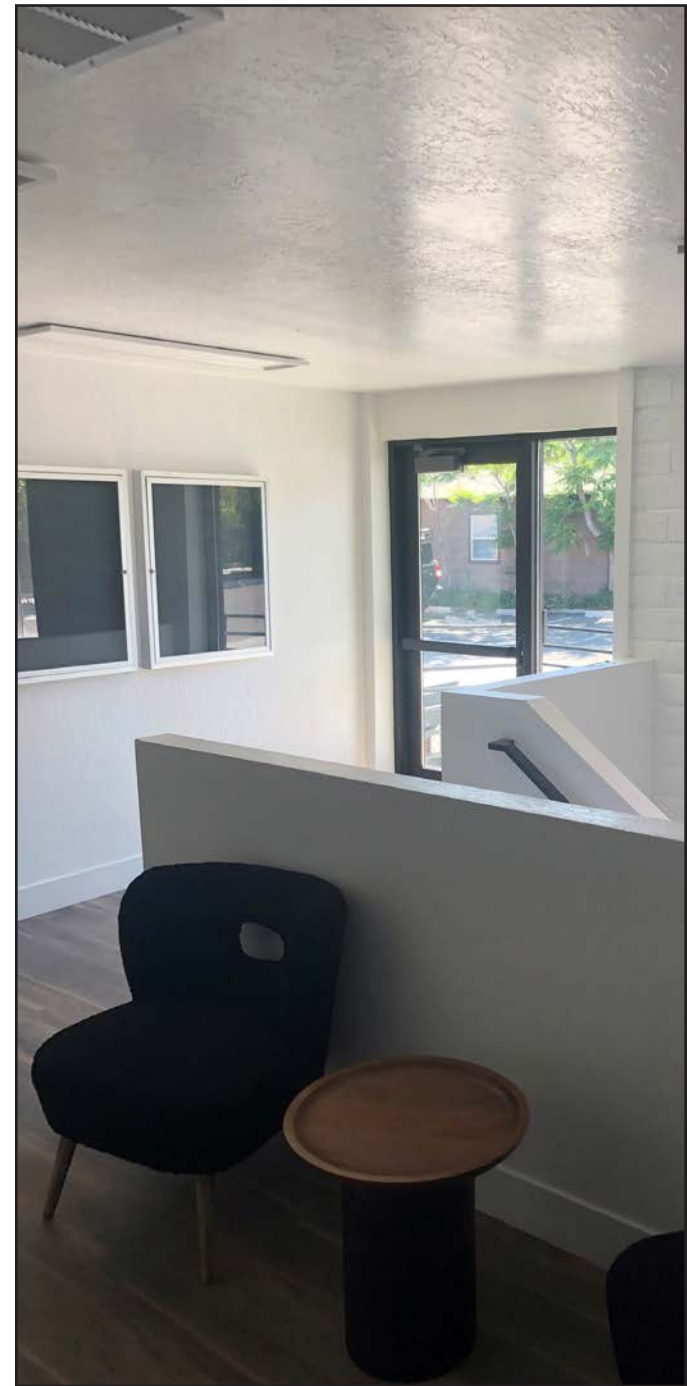
# *Studio 705 - Salon Suites*

## **Exterior Photos**



# *Studio 705 - Salon Suites*

## Upstairs Photos



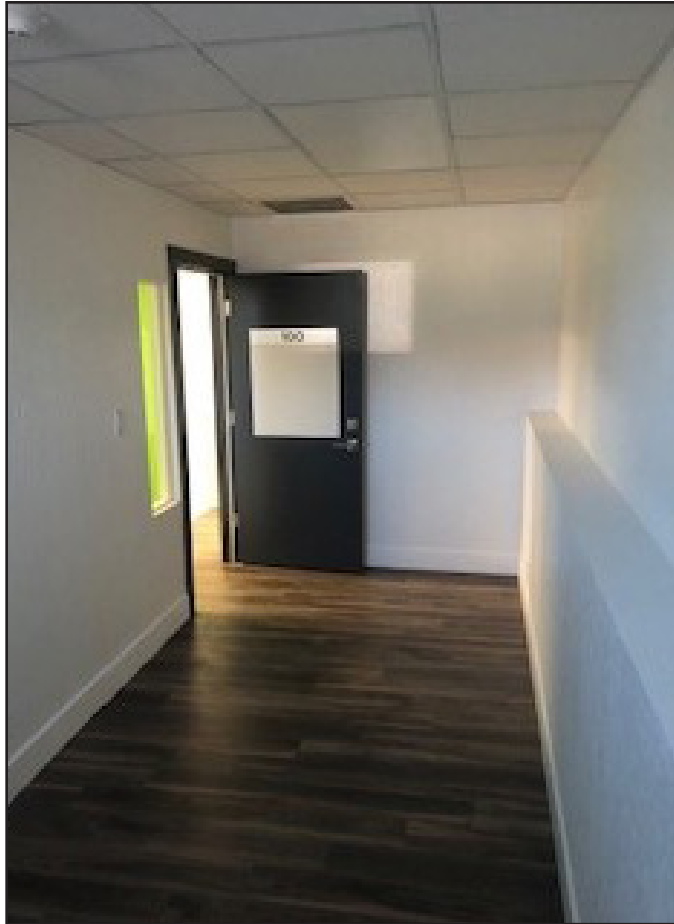
# *Studio 705 - Salon Suites*

## **Upstairs Photos**



# *Studio 705 - Salon Suites*

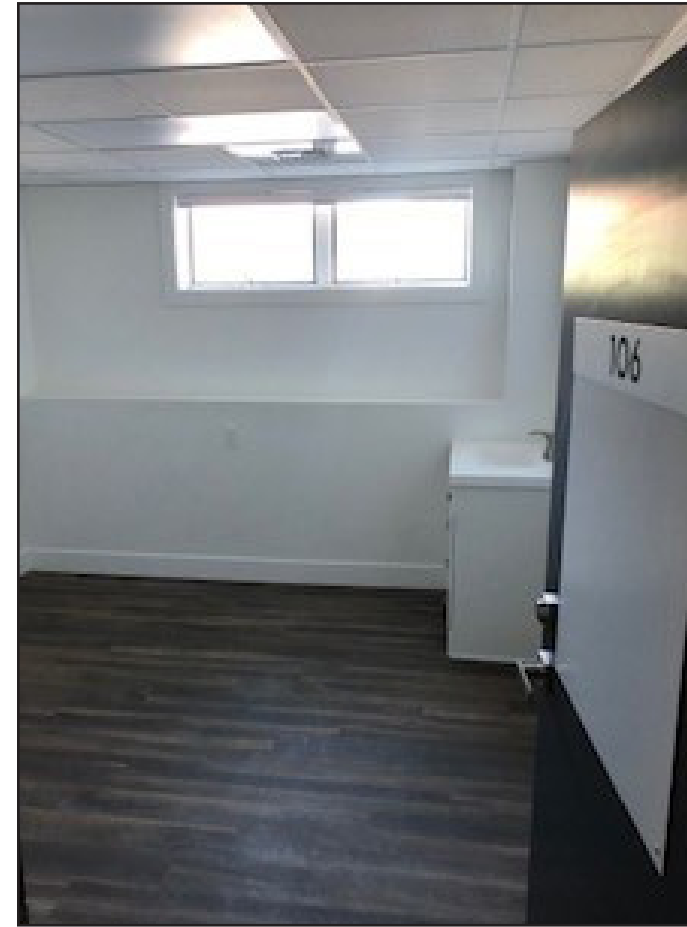
## **Downstairs Photos**





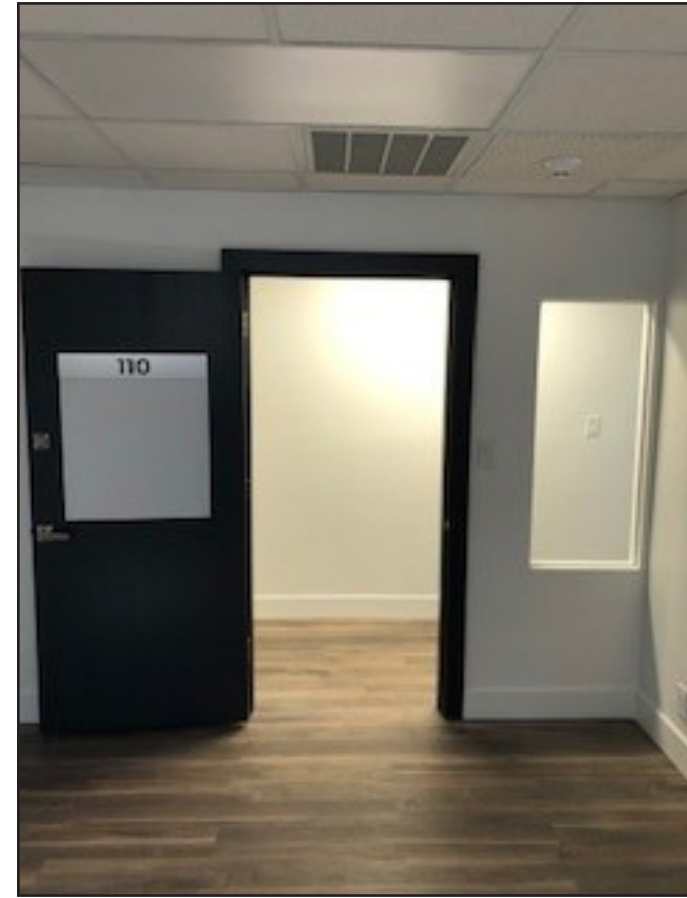
# *Studio 705 - Salon Suites*

## **Downstairs Photos**



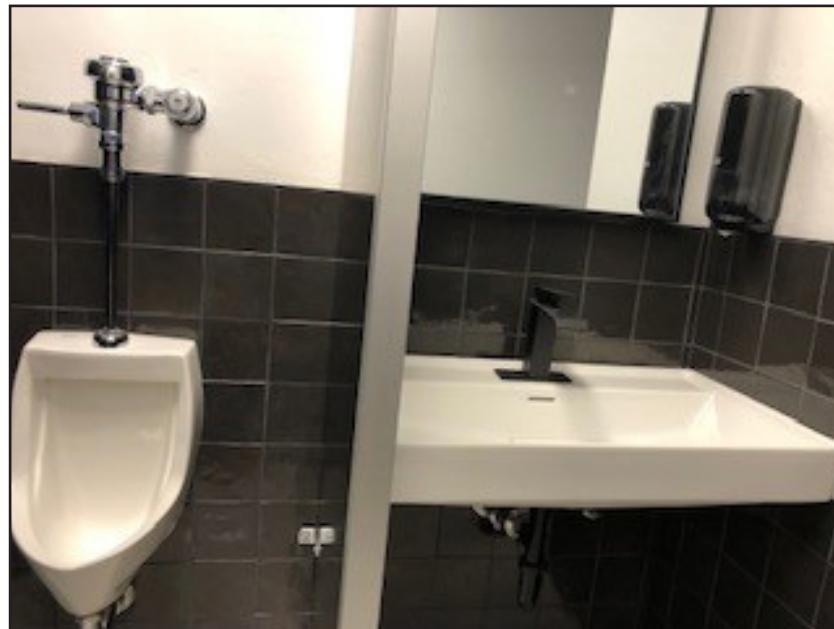
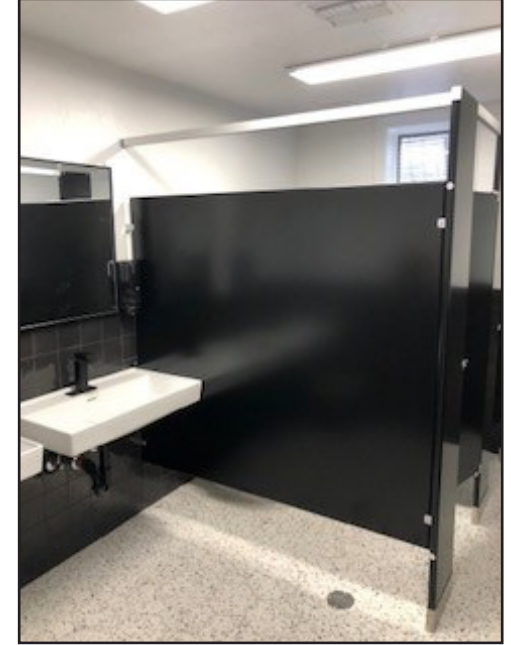
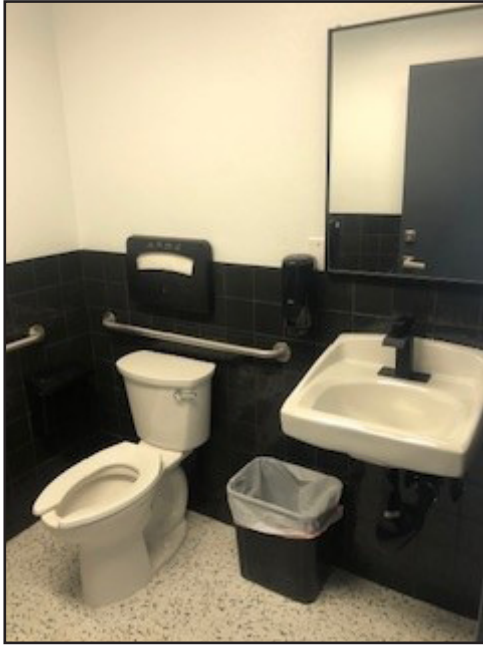
# *Studio 705 - Salon Suites*

## **Downstairs Photos**



# *Studio 705 - Salon Suites*

## **Bathroom Photos**



# Studio 705 - Salon Suites

## Aerial

### Demographics

	1Mile	3Mile	5Mile
Population:	23,716	129,320	244,485
Average HH Income	\$61,877	\$69,321	\$77,058
Traffic Counts	Wells Ave.	12,887 ADT	



No warranty or representation is made to the accuracy of the foregoing information. Terms of sale or lease and availability are subject to change or withdrawal without notice.

# *Studio 705 - Salon Suites*

**For Lease By Owner**



For More Information, Please Contact

**Craig Duhs**

**[Craig@DuhsCommercial.com](mailto:Craig@DuhsCommercial.com)**

**619-491-0612**

**Partner | CA Lic: 01086079**

