

Salon Suites For Lease by owner

705 S. Wells Avenue, Reno, NV 89502



Craig Duhs

Criag@DuhsCommercial.com

619.491.0612

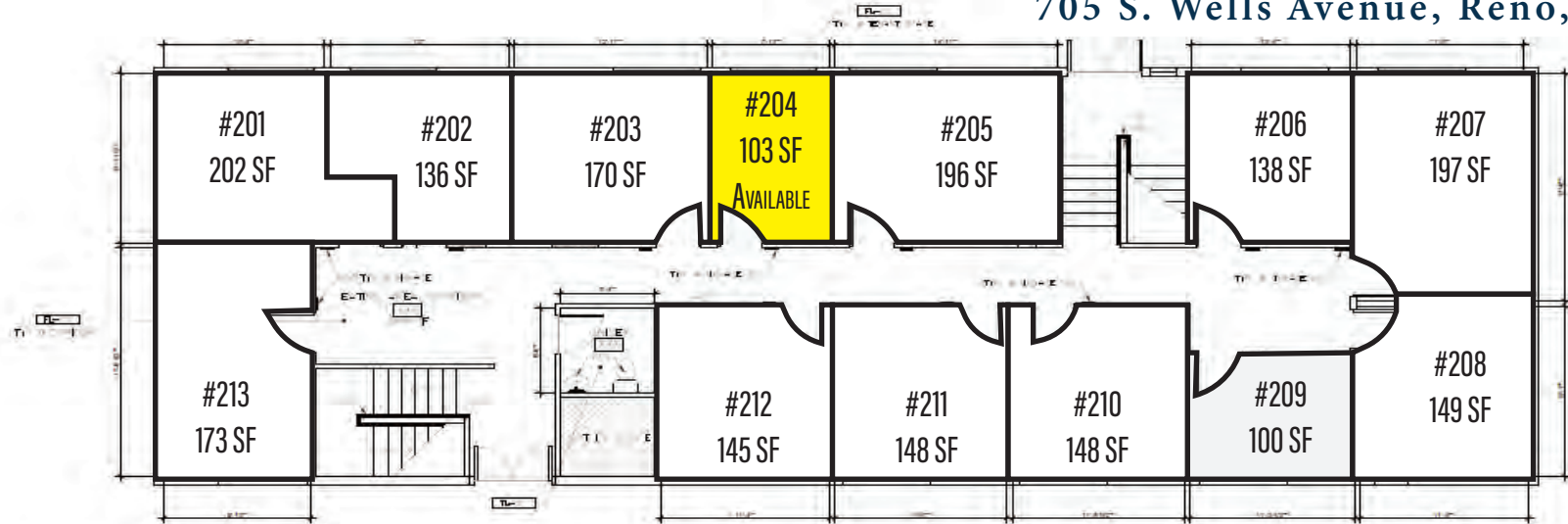
CA License: 01086079



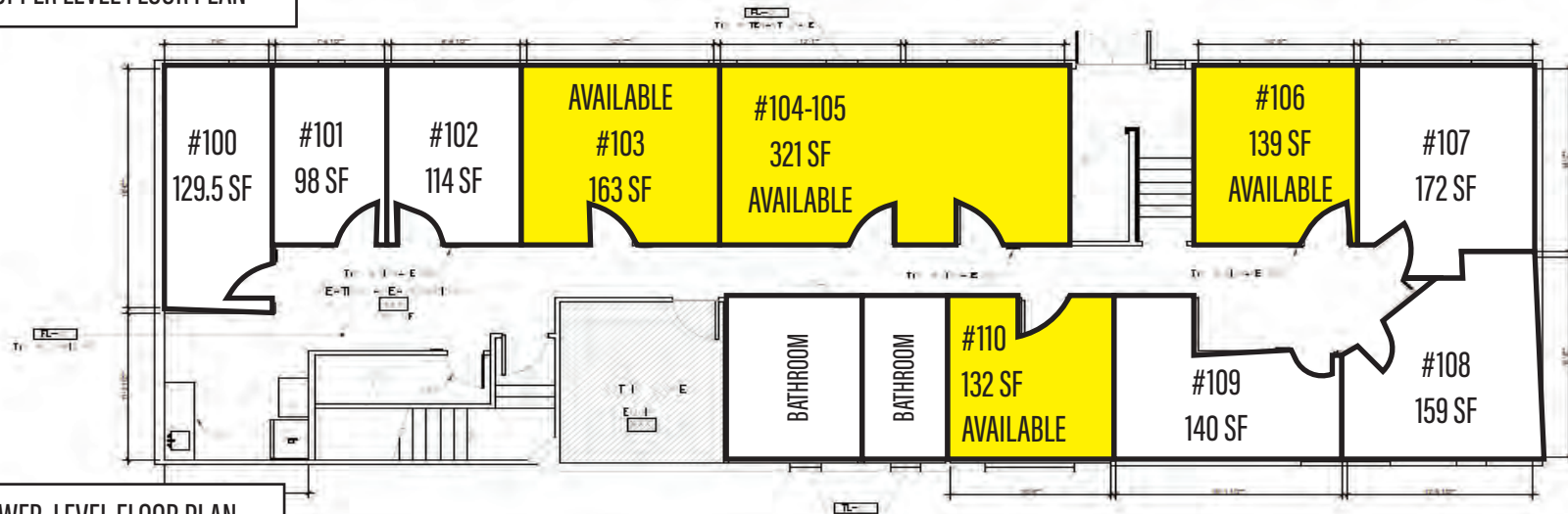
No warranty or representation is made to the accuracy of the foregoing information. Terms of sale or lease and availability are subject to change or withdrawal without notice. 3830 Ray Street, San Diego, CA 92104 | Phone (619) 491-0335 | Fax (619) 491-0696 | www.DuhsCommercial.com

Floor Plan

705 S. Wells Avenue, Reno, NV 89502



2 - UPPER LEVEL FLOOR PLAN



1 - LOWER LEVEL FLOOR PLAN

Craig Duhs

Craig@DuhsCommercial.com

619.491.0612

CA License: 01086079



COMMERCIAL
BROKERAGE · INVESTMENT · DEVELOPMENT

No warranty or representation is made to the accuracy of the foregoing information. Terms of sale or lease and availability are subject to change or withdrawal without notice. 3830 Ray Street, San Diego, CA 92104 | Phone (619) 491-0335 | Fax (619) 491-0696 | www.DuhsCommercial.com

Photos

705 S. Wells Avenue, Reno, NV 89502



Craig Duhs

Criag@DuhsCommercial.com

619.491.0612

CA License: 01086079



COMMERCIAL
BROKERAGE · INVESTMENT · DEVELOPMENT

No warranty or representation is made to the accuracy of the foregoing information. Terms of sale or lease and availability are subject to change or withdrawal without notice. 3830 Ray Street, San Diego, CA 92104 | Phone (619) 491-0335 | Fax (619) 491-0696 | www.DuhsCommercial.com

Photos

705 S. Wells Avenue, Reno, NV 89502



Craig Duhs

Craig@DuhsCommercial.com

619.491.0612

CA License: 01086079



COMMERCIAL
BROKERAGE · INVESTMENT · DEVELOPMENT

No warranty or representation is made to the accuracy of the foregoing information. Terms of sale or lease and availability are subject to change or withdrawal without notice. 3830 Ray Street, San Diego, CA 92104 | Phone (619) 491-0335 | Fax (619) 491-0696 | www.DuhsCommercial.com

Photos

705 S. Wells Avenue, Reno, NV 89502



Craig Duhs

Craig@DuhsCommercial.com

619.491.0612

CA License: 01086079



COMMERCIAL
BROKERAGE · INVESTMENT · DEVELOPMENT

No warranty or representation is made to the accuracy of the foregoing information. Terms of sale or lease and availability are subject to change or withdrawal without notice. 3830 Ray Street, San Diego, CA 92104 | Phone (619) 491-0335 | Fax (619) 491-0696 | www.DuhsCommercial.com

Photos

705 S. Wells Avenue, Reno, NV 89502



Craig Duhs

Craig@DuhsCommercial.com

619.491.0612

CA License: 01086079



COMMERCIAL
BROKERAGE · INVESTMENT · DEVELOPMENT

No warranty or representation is made to the accuracy of the foregoing information. Terms of sale or lease and availability are subject to change or withdrawal without notice. 3830 Ray Street, San Diego, CA 92104 | Phone (619) 491-0335 | Fax (619) 491-0696 | www.DuhsCommercial.com

Exterior Photos

705 S. Wells Avenue, Reno, NV 89502



Craig Duhs

Craig@DuhsCommercial.com

619.491.0612

CA License: 01086079



COMMERCIAL
BROKERAGE · INVESTMENT · DEVELOPMENT

No warranty or representation is made to the accuracy of the foregoing information. Terms of sale or lease and availability are subject to change or withdrawal without notice. 3830 Ray Street, San Diego, CA 92104 | Phone (619) 491-0335 | Fax (619) 491-0696 | www.DuhsCommercial.com

Exterior Photos

705 S. Wells Avenue, Reno, NV 89502



Craig Duhs

Criag@DuhsCommercial.com

619.491.0612

CA License: 01086079



COMMERCIAL
BROKERAGE · INVESTMENT · DEVELOPMENT

No warranty or representation is made to the accuracy of the foregoing information. Terms of sale or lease and availability are subject to change or withdrawal without notice. 3830 Ray Street, San Diego, CA 92104 | Phone (619) 491-0335 | Fax (619) 491-0696 | www.DuhsCommercial.com

Upstairs Photos

705 S. Wells Avenue, Reno, NV 89502



Craig Duhs

Craig@DuhsCommercial.com

619.491.0612

CA License: 01086079



COMMERCIAL
BROKERAGE · INVESTMENT · DEVELOPMENT

No warranty or representation is made to the accuracy of the foregoing information. Terms of sale or lease and availability are subject to change or withdrawal without notice. 3830 Ray Street, San Diego, CA 92104 | Phone (619) 491-0335 | Fax (619) 491-0696 | www.DuhsCommercial.com

Photos

705 S. Wells Avenue, Reno, NV 89502



Craig Duhs

Craig@DuhsCommercial.com

619.491.0612

CA License: 01086079



COMMERCIAL
BROKERAGE · INVESTMENT · DEVELOPMENT

No warranty or representation is made to the accuracy of the foregoing information. Terms of sale or lease and availability are subject to change or withdrawal without notice. 3830 Ray Street, San Diego, CA 92104 | Phone (619) 491-0335 | Fax (619) 491-0696 | www.DuhsCommercial.com

Photos

705 S. Wells Avenue, Reno, NV 89502



Craig Duhs

Criag@DuhsCommercial.com

619.491.0612

CA License: 01086079



COMMERCIAL
BROKERAGE · INVESTMENT · DEVELOPMENT

No warranty or representation is made to the accuracy of the foregoing information. Terms of sale or lease and availability are subject to change or withdrawal without notice. 3830 Ray Street, San Diego, CA 92104 | Phone (619) 491-0335 | Fax (619) 491-0696 | www.DuhsCommercial.com

Upstairs Photos

705 S. Wells Avenue, Reno, NV 89502



Craig Duhs

Craig@DuhsCommercial.com

619.491.0612

CA License: 01086079

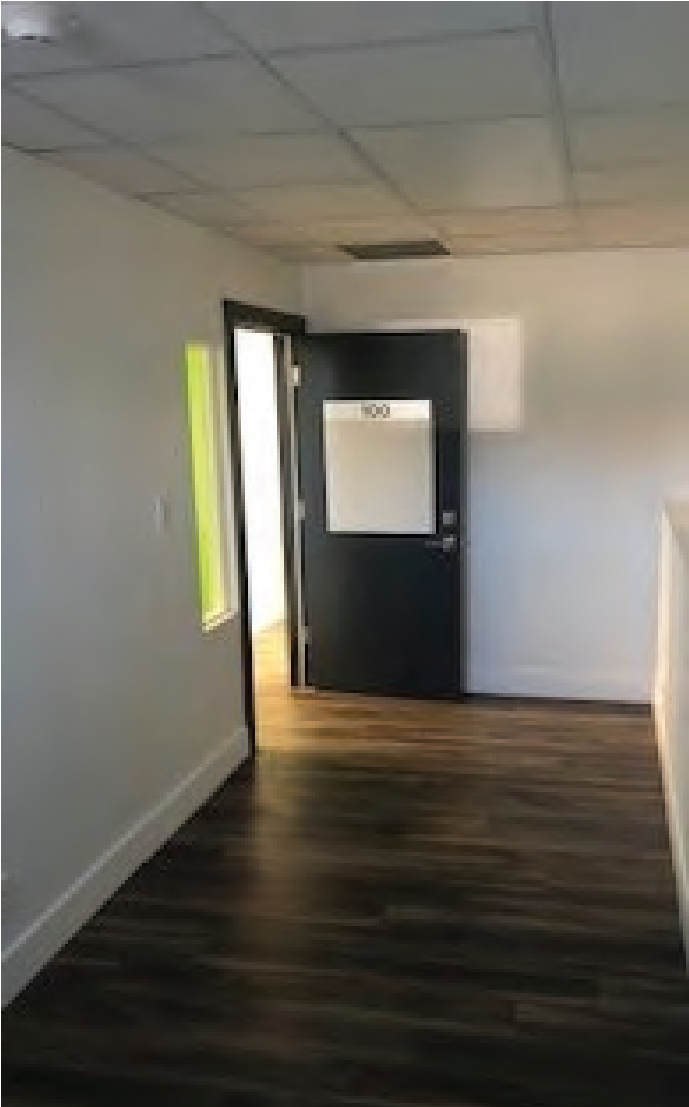


COMMERCIAL
BROKERAGE · INVESTMENT · DEVELOPMENT

No warranty or representation is made to the accuracy of the foregoing information. Terms of sale or lease and availability are subject to change or withdrawal without notice. 3830 Ray Street, San Diego, CA 92104 | Phone (619) 491-0335 | Fax (619) 491-0696 | www.DuhsCommercial.com

Downstairs Photos

705 S. Wells Avenue, Reno, NV 89502



Craig Duhs

Criag@DuhsCommercial.com

619.491.0612

CA License: 01086079

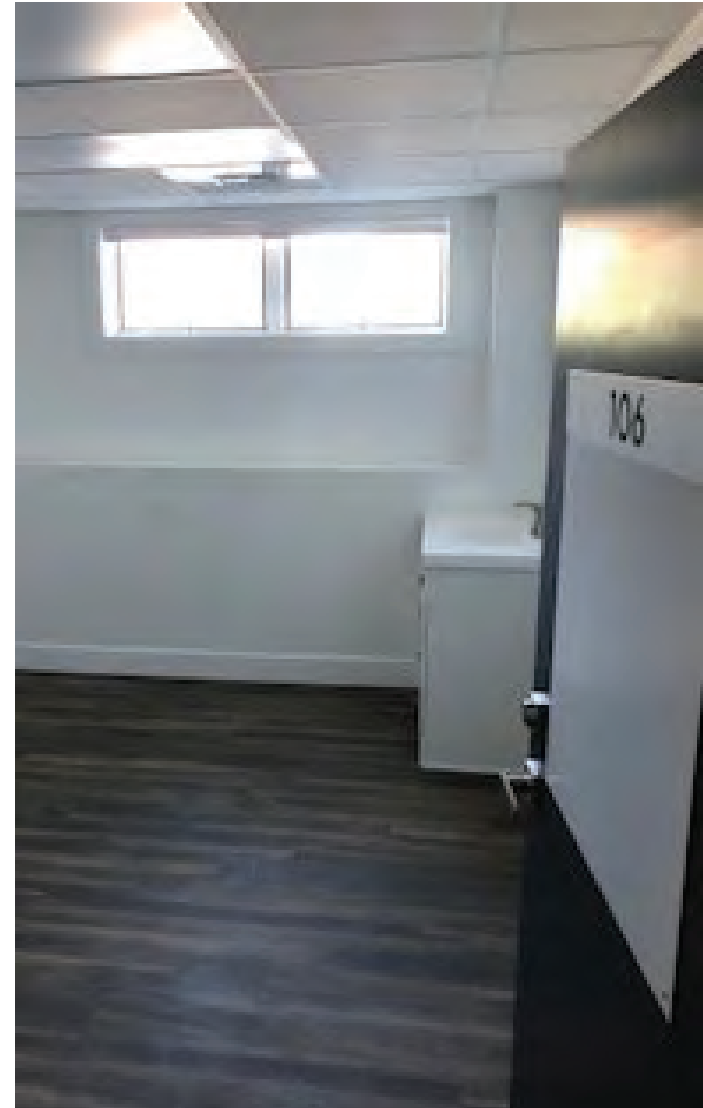


COMMERCIAL
BROKERAGE · INVESTMENT · DEVELOPMENT

No warranty or representation is made to the accuracy of the foregoing information. Terms of sale or lease and availability are subject to change or withdrawal without notice. 3830 Ray Street, San Diego, CA 92104 | Phone (619) 491-0335 | Fax (619) 491-0696 | www.DuhsCommercial.com

Downstairs Photos

705 S. Wells Avenue, Reno, NV 89502



Craig Duhs

Craig@DuhsCommercial.com

619.491.0612

CA License: 01086079

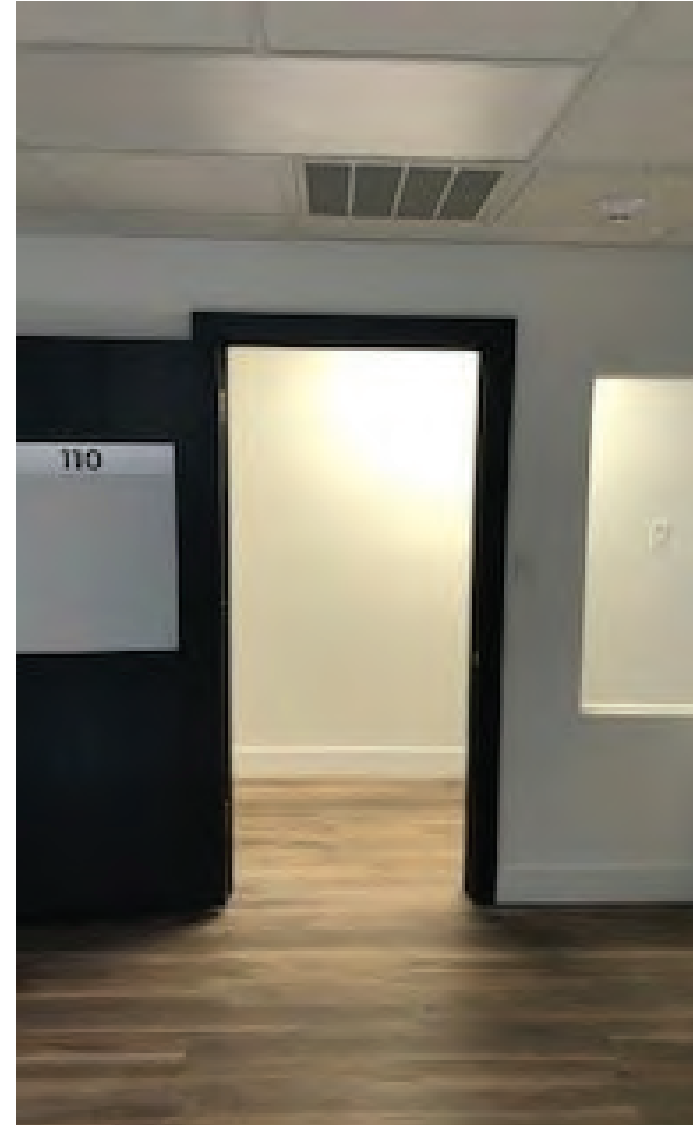


COMMERCIAL
BROKERAGE · INVESTMENT · DEVELOPMENT

No warranty or representation is made to the accuracy of the foregoing information. Terms of sale or lease and availability are subject to change or withdrawal without notice. 3830 Ray Street, San Diego, CA 92104 | Phone (619) 491-0335 | Fax (619) 491-0696 | www.DuhsCommercial.com

Downstairs Photos

705 S. Wells Avenue, Reno, NV 89502



Craig Duhs

Craig@DuhsCommercial.com

619.491.0612

CA License: 01086079

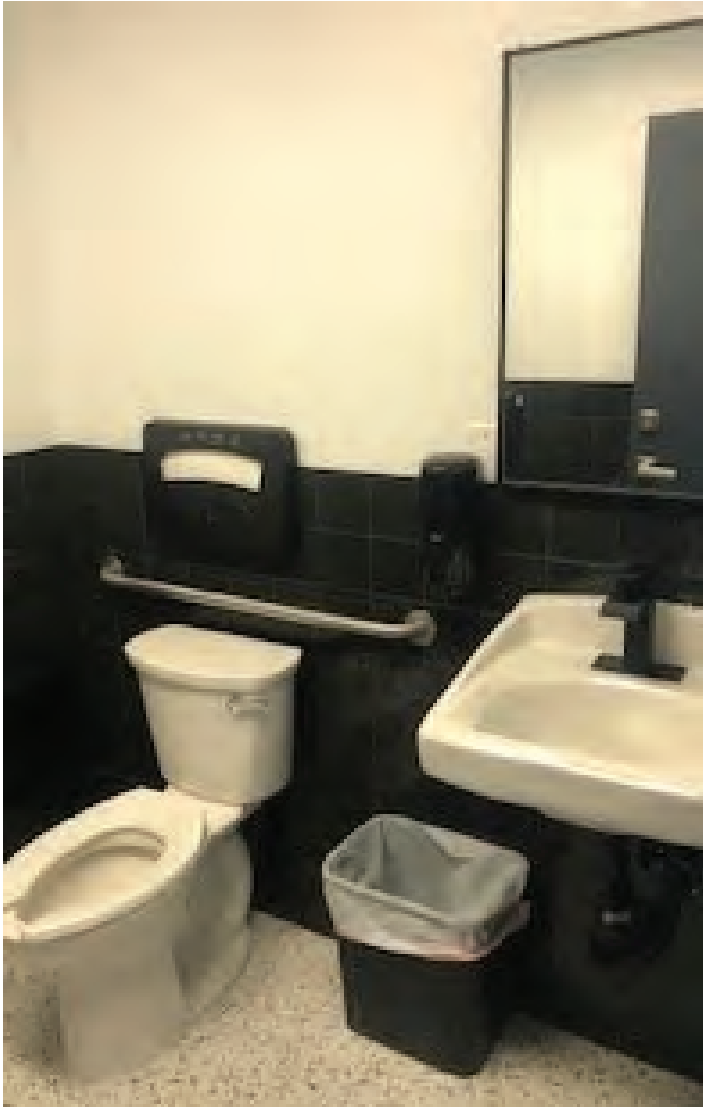


COMMERCIAL
BROKERAGE · INVESTMENT · DEVELOPMENT

No warranty or representation is made to the accuracy of the foregoing information. Terms of sale or lease and availability are subject to change or withdrawal without notice. 3830 Ray Street, San Diego, CA 92104 | Phone (619) 491-0335 | Fax (619) 491-0696 | www.DuhsCommercial.com

Bathroom Photos

705 S. Wells Avenue, Reno, NV 89502



Craig Duhs

Craig@DuhsCommercial.com

619.491.0612

CA License: 01086079



COMMERCIAL
BROKERAGE · INVESTMENT · DEVELOPMENT

No warranty or representation is made to the accuracy of the foregoing information. Terms of sale or lease and availability are subject to change or withdrawal without notice. 3830 Ray Street, San Diego, CA 92104 | Phone (619) 491-0335 | Fax (619) 491-0696 | www.DuhsCommercial.com

Bathroom Photos

705 S. Wells Avenue, Reno, NV 89502



Craig Duhs

Criag@DuhsCommercial.com

619.491.0612

CA License: 01086079



COMMERCIAL
BROKERAGE · INVESTMENT · DEVELOPMENT

No warranty or representation is made to the accuracy of the foregoing information. Terms of sale or lease and availability are subject to change or withdrawal without notice. 3830 Ray Street, San Diego, CA 92104 | Phone (619) 491-0335 | Fax (619) 491-0696 | www.DuhsCommercial.com

Aerial

705 S. Wells Avenue, Reno, NV 89502



DEMOGRAPHICS:
TOTAL POPULATION
1 MILE: 23,716 3 MILES: 129,320 5 MILES: 244,485

AVG. HH INCOME:
1 MILE: \$61,877 3 MILES: \$69,321 5 MILES: \$77,058

TRAFFIC COUNT (2022)
WELLS AVE.: 12,887 ADT

Craig Duhs

Craig@DuhsCommercial.com

619.491.0612

CA License: 01086079



COMMERCIAL
BROKERAGE · INVESTMENT · DEVELOPMENT

No warranty or representation is made to the accuracy of the foregoing information. Terms of sale or lease and availability are subject to change or withdrawal without notice. 3830 Ray Street, San Diego, CA 92104 | Phone (619) 491-0335 | Fax (619) 491-0696 | www.DuhsCommercial.com