

FOR LEASE

IDAHO CENTER

645-649 W. IDAHO ST, KALISPELL, MT 59901

SPACES AVAILABLE FROM 1,650 – 3,640 SF

RECENTLY EXTERIOR REMODELED SHOPPING CENTER



Scott Duhs

Partner

Scott@duhscommercial.com

858.245.7217

CA Lic. # 01048874

Craig Duhs

Partner

Craig@duhscommercial.com

619.540.1001

CA Lic. # 01086079



COMMERCIAL
BROKERAGE • INVESTMENT • DEVELOPMENT

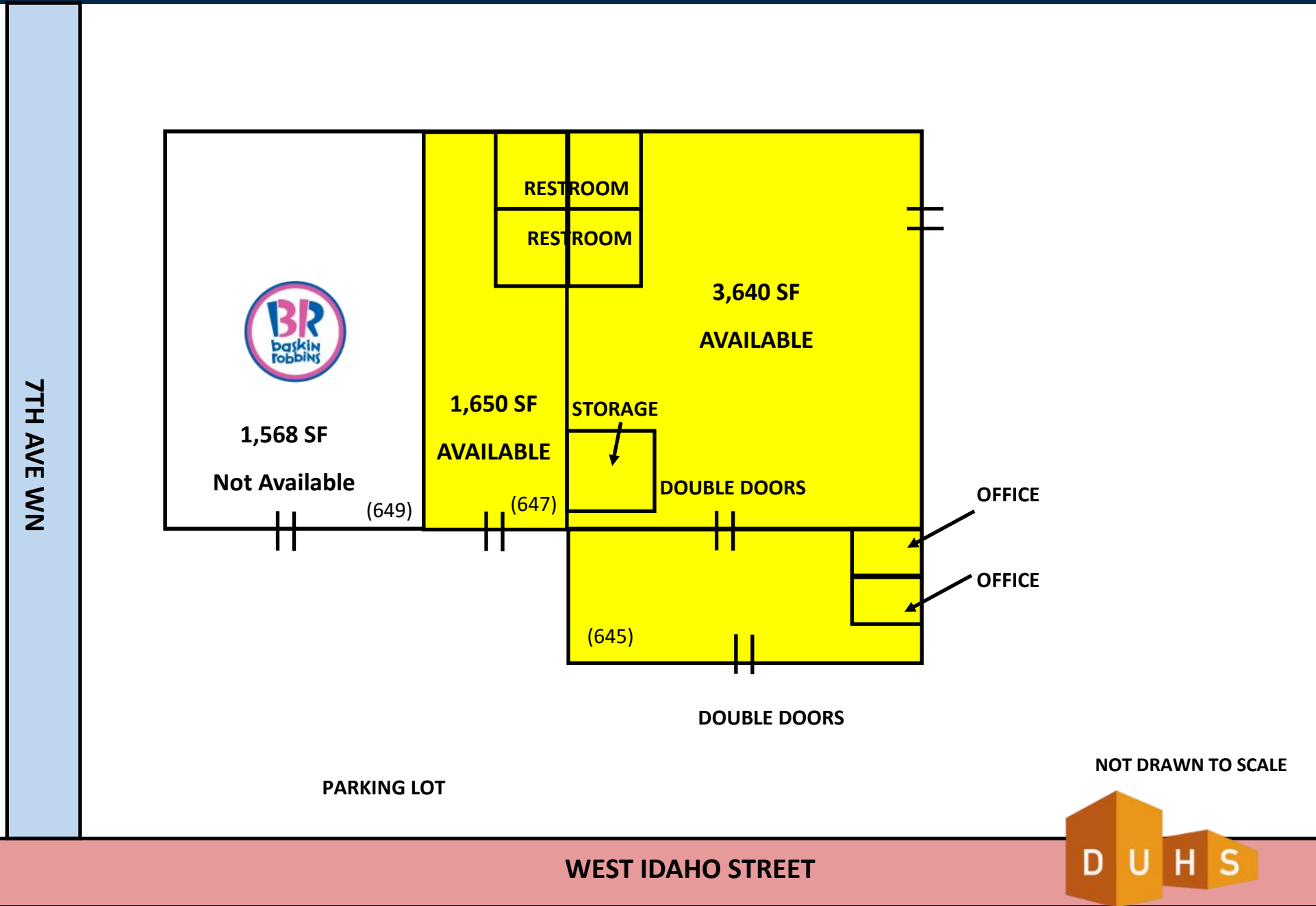


No warranty or representation is made to the accuracy of the foregoing information. Terms of sale or lease and availability are subject to change without notice.
3830 Ray Street, San Diego, CA 92104 | Phone (619) 491-0335 | Fax (619) 491-0696 | www.DuhsCommercial.com

SITE PLAN

IDAHO CENTER

645-649 W. IDAHO ST, KALISPELL, MT 59901



COMMERCIAL
BROKERAGE • INVESTMENT • DEVELOPMENT



PHOTOS

IDAHO CENTER
645-649 W. IDAHO ST, KALISPELL, MT 59901



No warranty or representation is made to the accuracy of the foregoing information. Terms of sale or lease and availability are subject to change or withdrawal without notice.
3830 Ray Street, San Diego, CA 92104 | Phone (619) 491-0335 | Fax (619) 491-0696 | www.DuhsCommercial.com



DEMOGRAPHICS

IDAHO CENTER
645-649 W. IDAHO ST, KALISPELL, MT 59901

	1 Mile	3 Mile	5 Mile
Population			
2020 Estimate	10,838	34,911	43,633
2025 Projection	11,712	38,181	47,663
Growth 2020 - 2025	8.06%	9.37%	9.24%
Growth 2010 - 2020	7.92%	17.57%	16.53%
2019 Population By Race			
White	10,044 92.67%	32,806 93.97%	41,125 94.25%
Black	37 0.34%	108 0.31%	1234 0.28%
Am. Indian & Alaskan	222 2.05%	540 1.55%	662 1.52%
Asian	148 1.37%	413 1.18%	447 1.09%
Hawaiian & Pacific Island	11 0.10%	30 0.09%	33 0.08%
Other	337 3.48%	1,014 2.90%	1,213 2.78%
Population by Hispanic Origin			
Hispanic Origin	404	1,136	1,1391
Households			
2020 Estimate	4,854	14,516	17,841
2025 Projection	5,219	15,795	119,397
2010 Census	4,551	12,528	15,493
Growth 2020 - 2025	7.52%	8.81%	8.72%
Growth 2010 - 2020	6.66%	15.87%	15.16%
2020 Avg Household Income	\$53,430	\$68,417	\$71,493
Occupied Housing			
Owner Occupied	2,323 47.86%	9,175 63.21%	11,746 65.84%
Renter Occupied	2,531 52.14%	5,341 36.79%	6,094 34.02%



No warranty or representation is made to the accuracy of the foregoing information. Terms of sale or lease and availability are subject to change or withdrawal without notice.
3830 Ray Street, San Diego, CA 92104 | Phone (619) 491-0335 | Fax (619) 491-0696 | www.DuhsCommercial.com



PHOTOS

IDAHO CENTER
645-649 W. IDAHO ST, KALISPELL, MT 59901



No warranty or representation is made to the accuracy of the foregoing information. Terms of sale or lease and availability are subject to change or withdrawal without notice.
3830 Ray Street, San Diego, CA 92104 | Phone (619) 491-0335 | Fax (619) 491-0696 | www.DuhsCommercial.com



PHOTOS

IDAHO CENTER

645-649 W. IDAHO ST, KALISPELL, MT 59901



COMMERCIAL
PROPERTY GROUP

No warranty or representation is made to the accuracy of the foregoing information. Terms of sale or lease and availability are subject to change or withdrawal without notice.
3830 Ray Street, San Diego, CA 92104 | Phone (619) 491-0335 | Fax (619) 491-0696 | www.DuhsCommercial.com



PHOTOS

IDAHO CENTER

645-649 W. IDAHO ST, KALISPELL, MT 59901



COMMERCIAL
COMMERCIAL • INDUSTRIAL • RESIDENTIAL

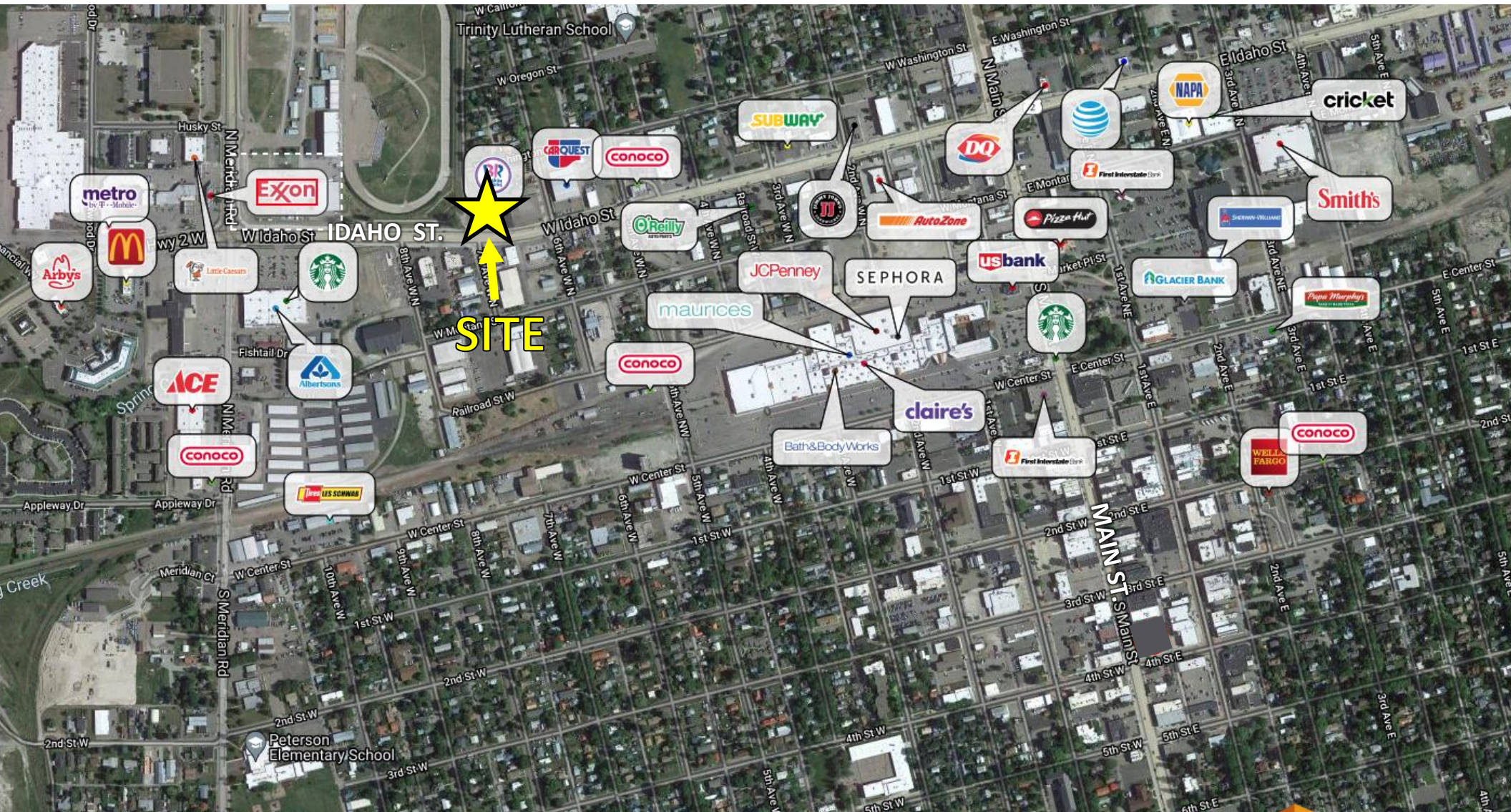
No warranty of representation is made in the accuracy of the foregoing information. Terms of sale or lease and availability are subject to change or withdrawal without notice.
1830 Kay Street, San Diego, CA 92104 | Phone (619) 491-0335 | Fax (619) 491-0696 | www.DuhsCommercial.com



AERIAL

IDAHO CENTER

645-649 W. IDAHO ST, KALISPELL, MT 59901



Scott Duhs

Partner

Scott@duhscommercial.com

858.245.7217

CA Lic. # 01048874

Craig Duhs

Partner

Craig@duhscommercial.com

619.540.1001

CA Lic. # 01086079



COMMERCIAL
BROKERAGE • INVESTMENT • DEVELOPMENT

No warranty or representation is made to the accuracy of the foregoing information. Terms of sale or lease and availability are subject to change or withdrawal without notice.

3830 Ray Street, San Diego, CA 92104 | Phone (619) 491-0335 | Fax (619) 491-0696 | www.DuhsCommercial.com

