

# *Studio 705 - Salon Suites*

**For Lease By Owner**



**705 S. Wells Avenue, Reno, NV 89502**

- From 98 SF - 321 SF
- Fully Built Salon Spaces with Sinks
- Parking in the Back
- Great Visibility on Wells Avenue

**Craig Duhs | [Craig@DuhsCommercial.com](mailto:Craig@DuhsCommercial.com) | 619-491-0612**

**Partner | CA Lic: 01086079**

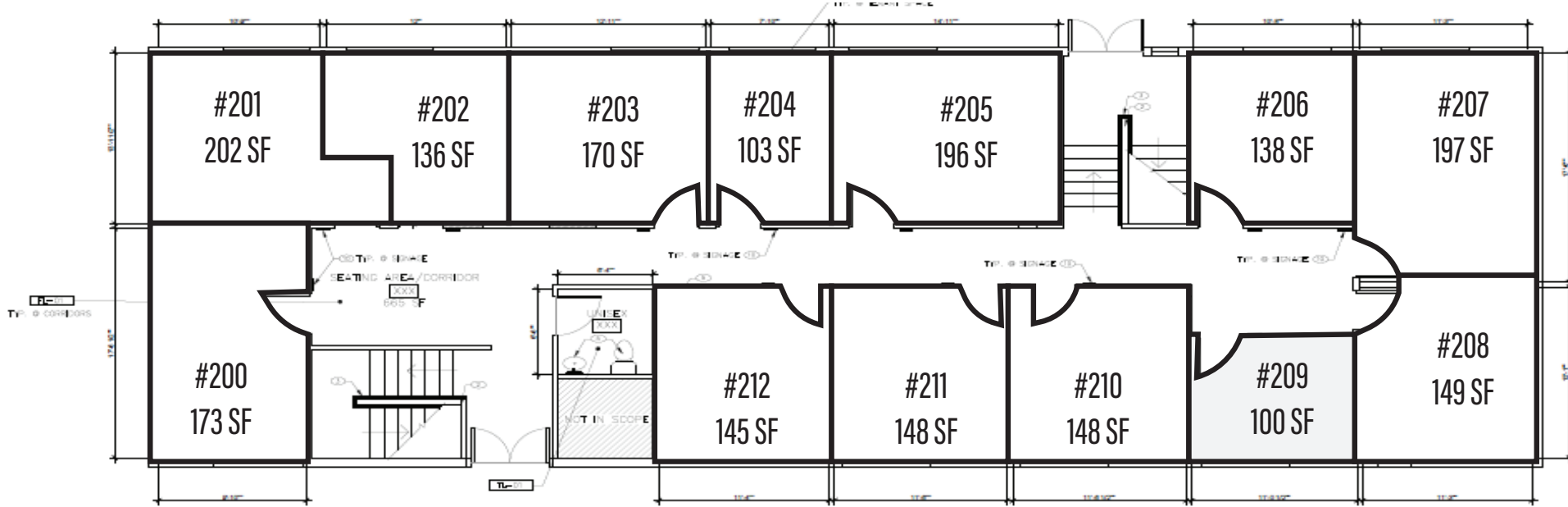


No warranty or representation is made to the accuracy of the foregoing information. Terms of sale or lease and availability are subject to change or withdrawal without notice.

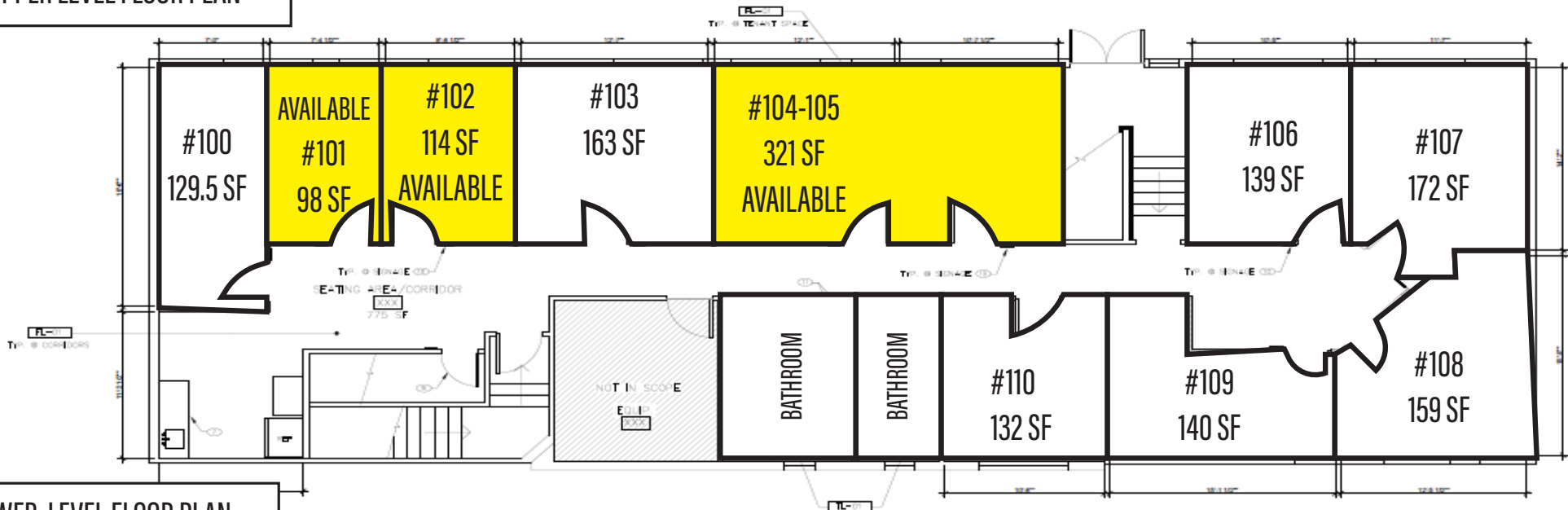
**SITE SOURCE**  
COMMERCIAL REAL ESTATE

# Studio 705 - Salon Suites

## Floor Plan



2 - UPPER LEVEL FLOOR PLAN



1 - LOWER LEVEL FLOOR PLAN

# *Studio 705 - Salon Suites*

## **Exterior Photos**



# *Studio 705 - Salon Suites*

## **Exterior Photos**



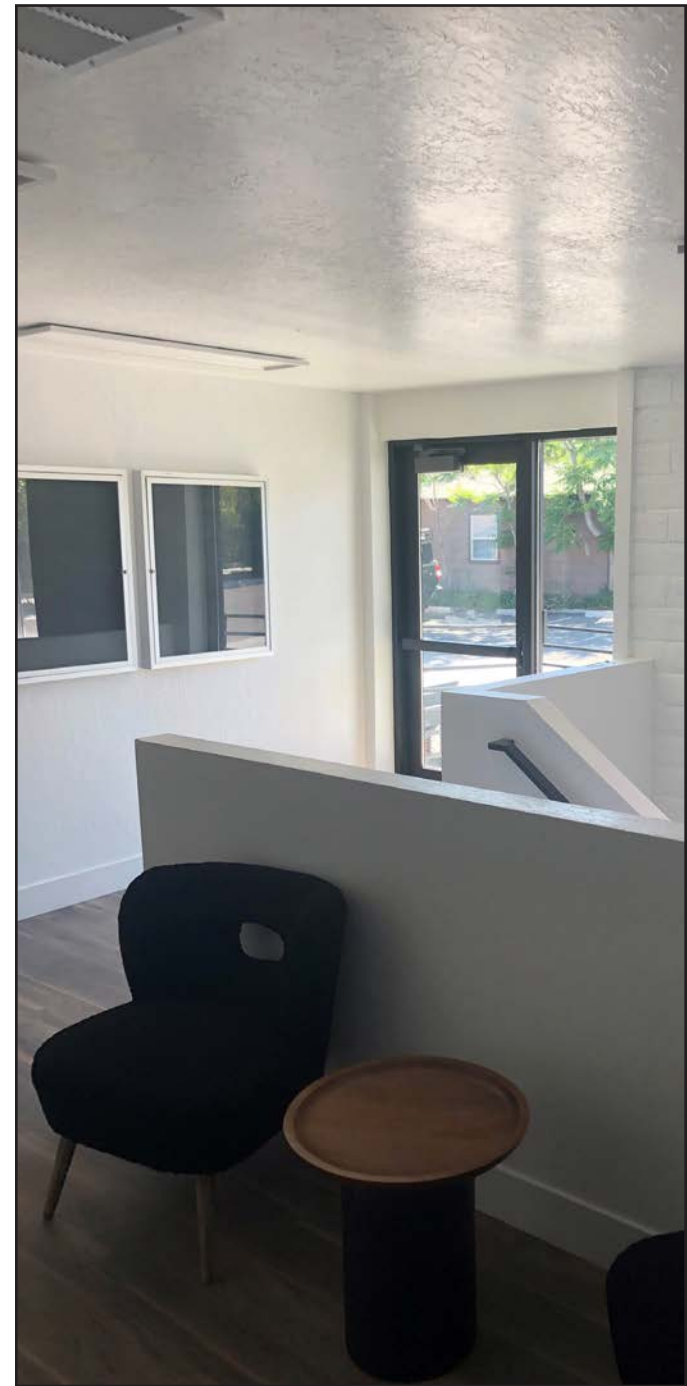
# *Studio 705 - Salon Suites*

## **Exterior Photos**



# *Studio 705 - Salon Suites*

## Upstairs Photos



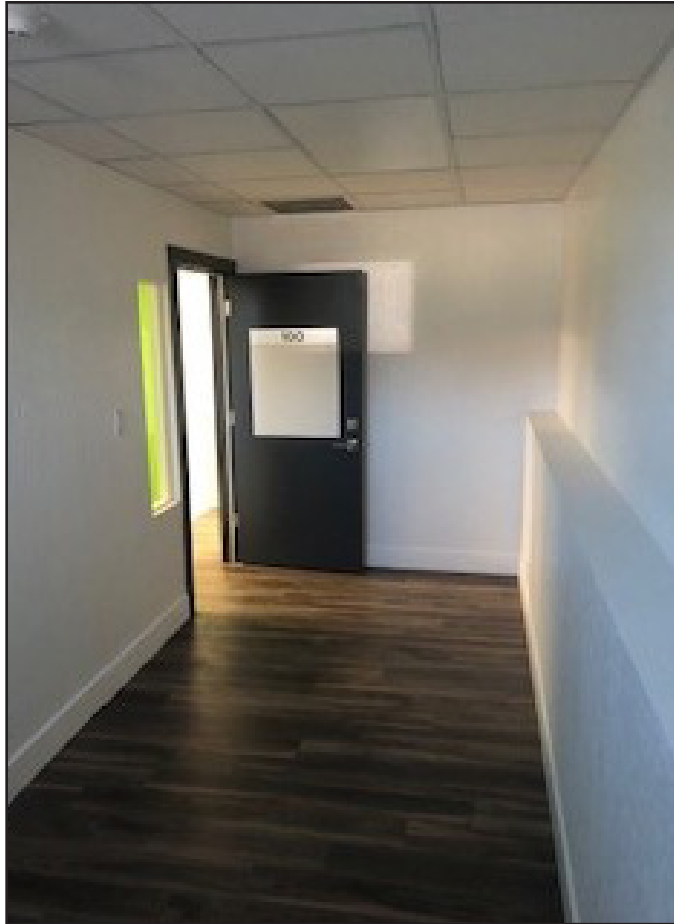
# *Studio 705 - Salon Suites*

## **Upstairs Photos**



# *Studio 705 - Salon Suites*

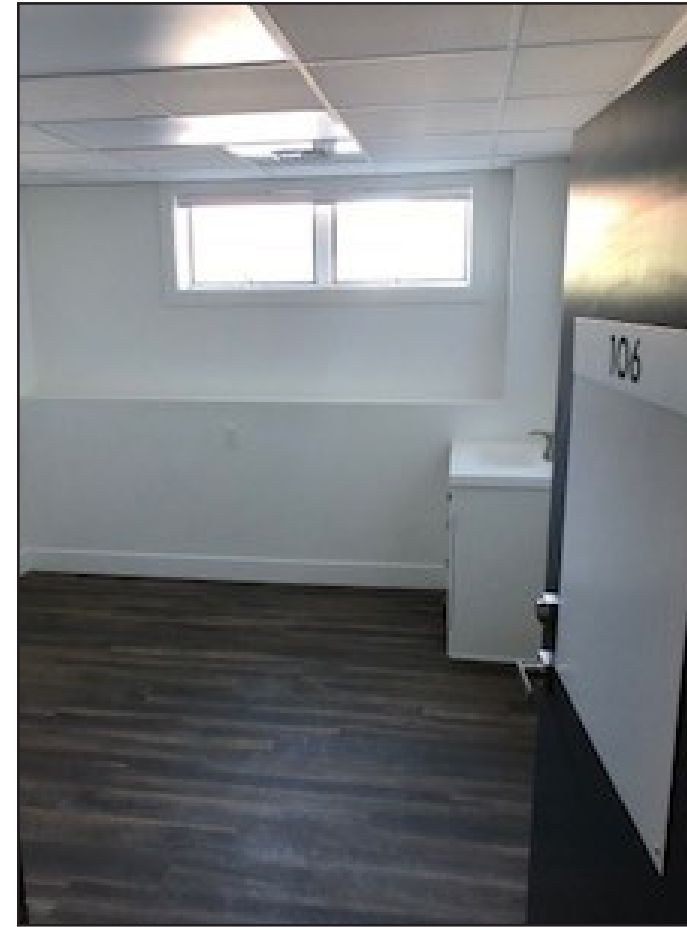
## **Downstairs Photos**





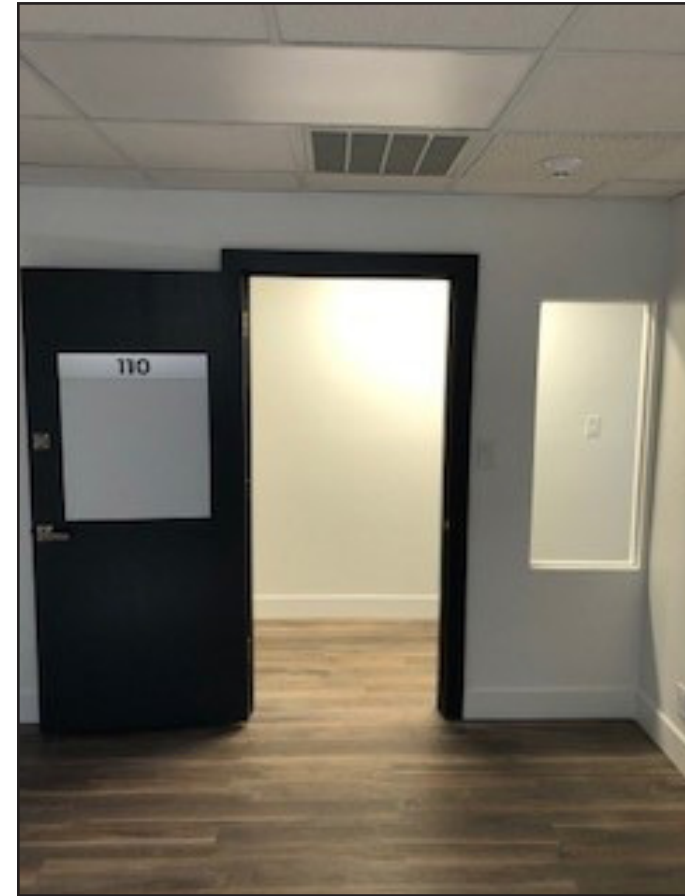
# *Studio 705 - Salon Suites*

## **Downstairs Photos**



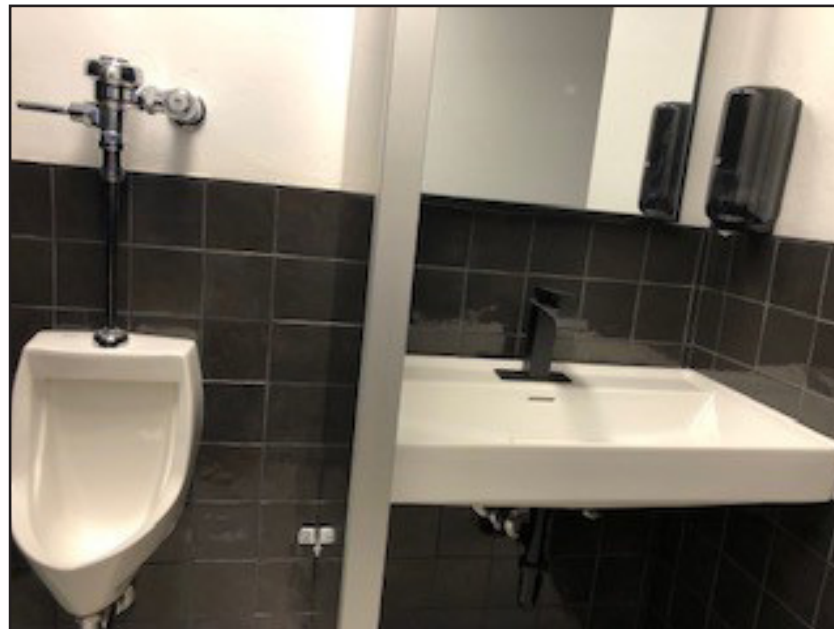
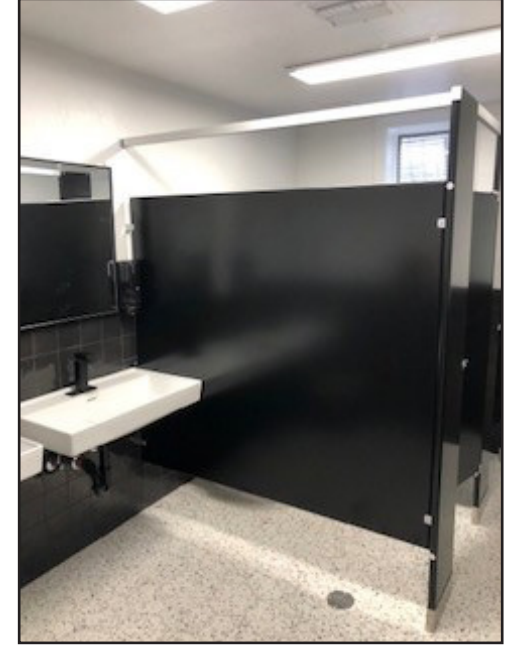
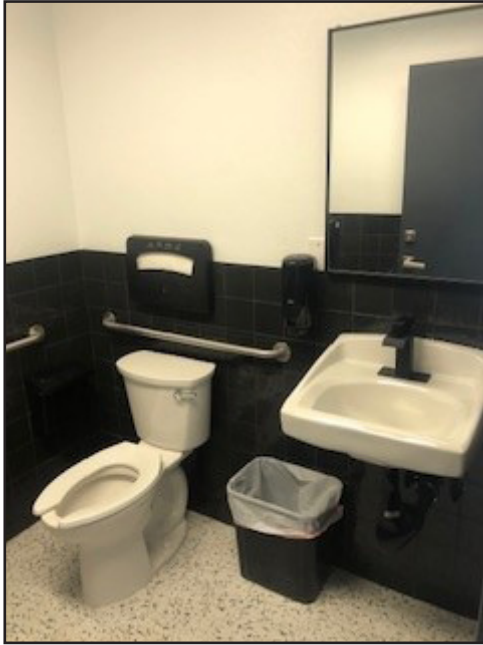
# *Studio 705 - Salon Suites*

## **Downstairs Photos**



# *Studio 705 - Salon Suites*

## **Bathroom Photos**



# Studio 705 - Salon Suites

## Aerial

### Demographics

	1Mile	3Mile	5Mile
Population:	23,716	129,320	244,485
Average HH Income	\$61,877	\$69,321	\$77,058
Traffic Counts	Wells Ave.	12,887 ADT	



# *Studio 705 - Salon Suites*

**For Lease By Owner**



For More Information, Please Contact

**Craig Duhs**

**[Craig@DuhsCommercial.com](mailto:Craig@DuhsCommercial.com)**

**619-491-0612**

**Partner | CA Lic: 01086079**

