

# — FOR LEASE

Calexico Crossroads  
1105 - 1113 Imperial Ave W, Calexico, CA 92231

- Dominant Grocery & Drug Anchored Shopping Center
- Excellent Visibility Along Highway 111 with 34,000 Cars per Day
- Dynamic New Tenants & Development in the Shopping Center

Available:  
1,680 SF / 1,800 SF / 1,840 SF



Rob Bloom

Vice President | CA License: 01302163

(619) 269-6076 | Rob@DuhsCommercial.com



COMMERCIAL  
BROKERAGE • INVESTMENT • DEVELOPMENT

No warranty or representation is made to the accuracy of the foregoing information. Terms of sale or lease and availability are subject to change or withdrawal without notice.

SITE SOURCE



# AERIAL

Calexico Crossroads  
1105 - 1113 Imperial Ave W, Calexico, CA 92231



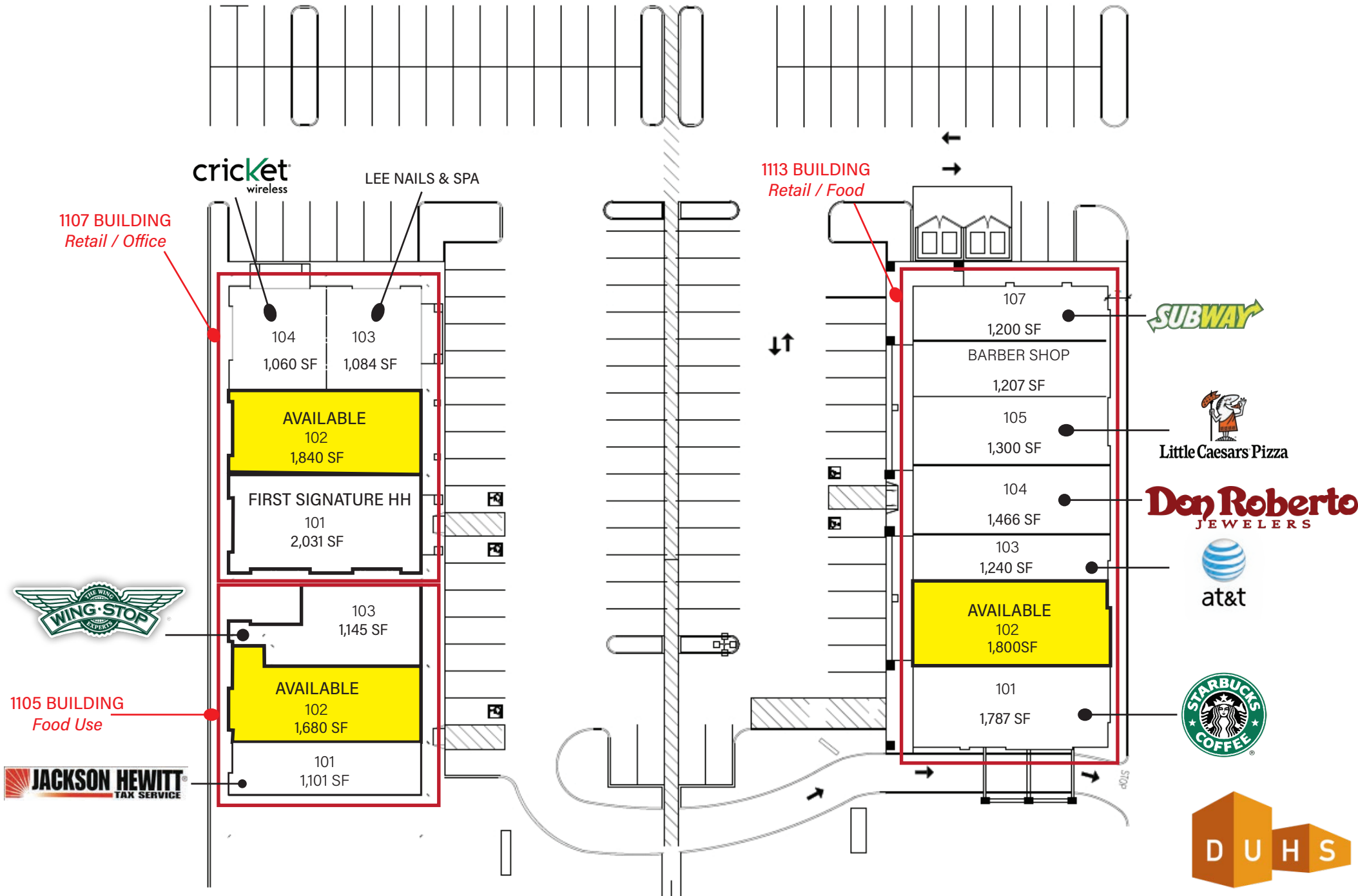
COMMERCIAL  
BROKERAGE • INVESTMENT • DEVELOPMENT

No warranty or representation is made to the accuracy of the foregoing information. Terms of sale or lease and availability are subject to change or withdrawal without notice.



# SITE PLAN

**Calexico Crossroads**  
1105 - 1113 Imperial Ave W, Calexico, CA 92231



No warranty or representation is made to the accuracy of the foregoing information. Terms of sale or lease and availability are subject to change or withdrawal without notice.



