

# FOR SALE

## Industrial Land

11903-11905 Highway 67  
Lakeside, CA 92040



**Price:** \$2,000,000  
**Land:** ±38,000 SF / 0.87 AC (Buyer to verify size)  
**Zoning:** M58 - High-Impact Industrial, County of San Diego (Buyer to verify zoning)  
**Improvements:** 2 Existing Homes & Garage (month-to-month lease)  
**APNs:** 375-100-22 / 375-100-14



**Rob Bloom**

Vice President | CA License: 01302163

858.405.5342 | Rob@DuhsCommercial.com

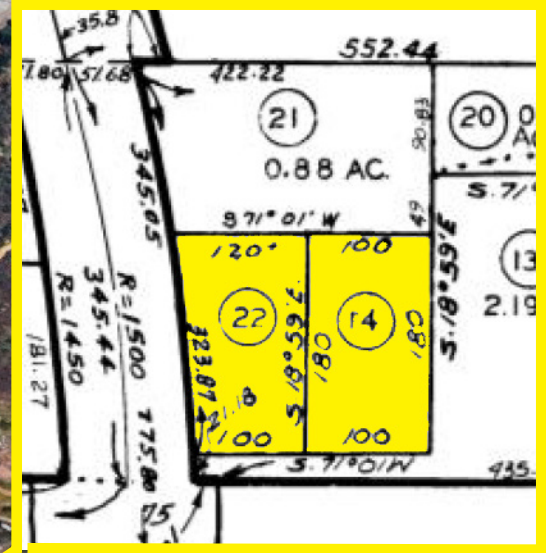
**COMMERCIAL**  
BROKERAGE • INVESTMENT • DEVELOPMENT

No warranty or representation is made to the accuracy of the foregoing information. Terms of sale or lease and availability are subject to change or withdrawal without notice.  
3830 Ray Street, San Diego, CA 92104 | Phone (619) 491-0335 | Fax (619) 491-0696 | www.DuhsCommercial.com

# FOR SALE

## Industrial Land

11903-11905 Highway 67  
Lakeside, CA 92040



**Rob Bloom**

Vice President | CA License: 01302163

858.405.5342 | [Rob@DuhsCommercial.com](mailto:Rob@DuhsCommercial.com)



**COMMERCIAL**  
BROKERAGE • INVESTMENT • DEVELOPMENT

No warranty or representation is made to the accuracy of the foregoing information. Terms of sale or lease and availability are subject to change or withdrawal without notice.  
3830 Ray Street, San Diego, CA 92104 | Phone (619) 491-0335 | Fax (619) 491-0696 | [www.DuhsCommercial.com](http://www.DuhsCommercial.com)