

FOR LEASE

Former Joann's | 2165 Hwy 2 E, Kalispell, MT 59901

Available: 5,940 SF - 18,000 SF



Scott Duhs - Owner

Scott@duhscommercial.com | (406) 414-6022

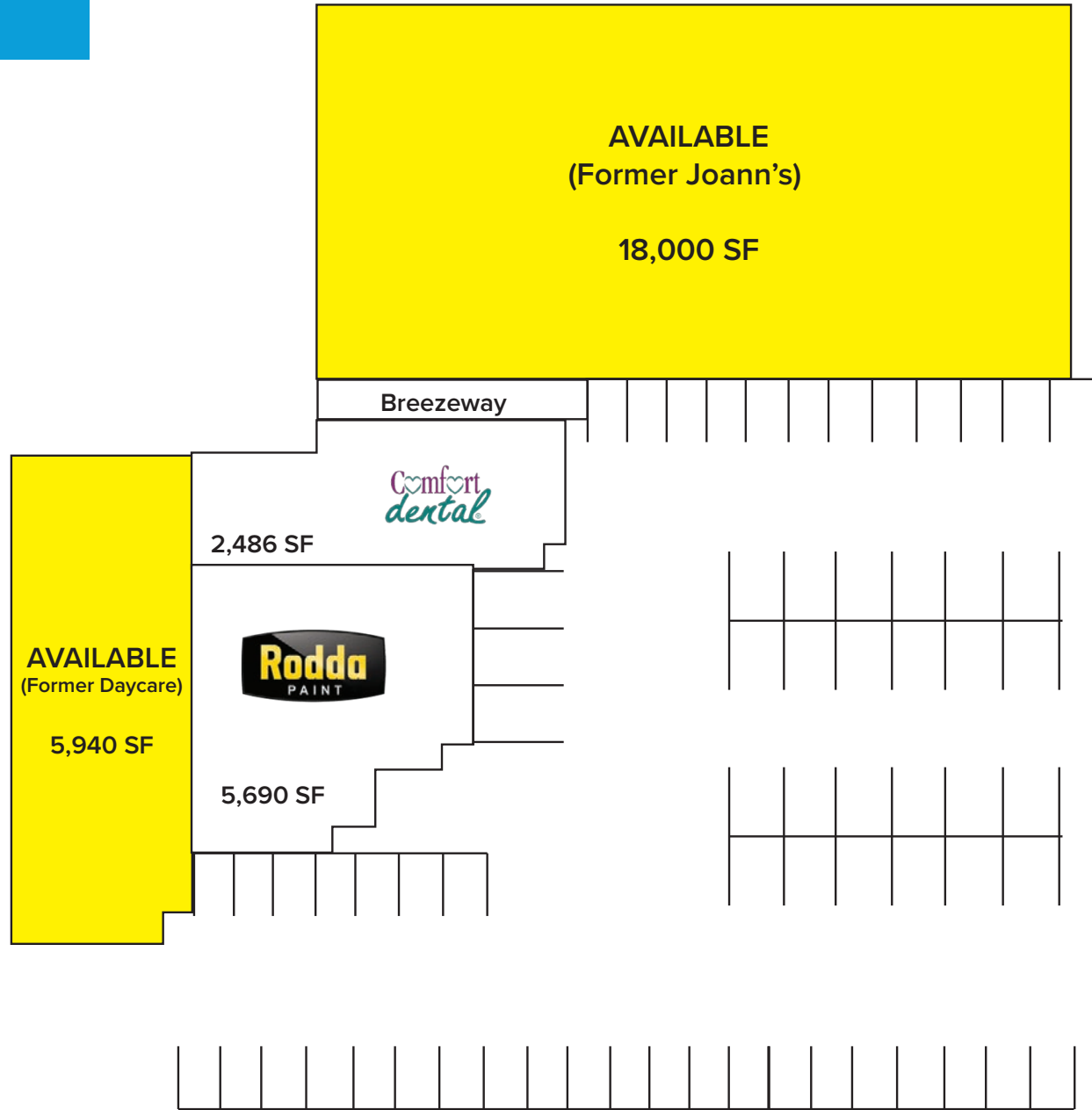


No warranty or representation is made to the accuracy of the foregoing information. Terms of sale or lease and availability are subject to change or withdrawal without notice.

FOR LEASE

2165 Hwy 2 E, Kalispell, MT 59901

Site Plan



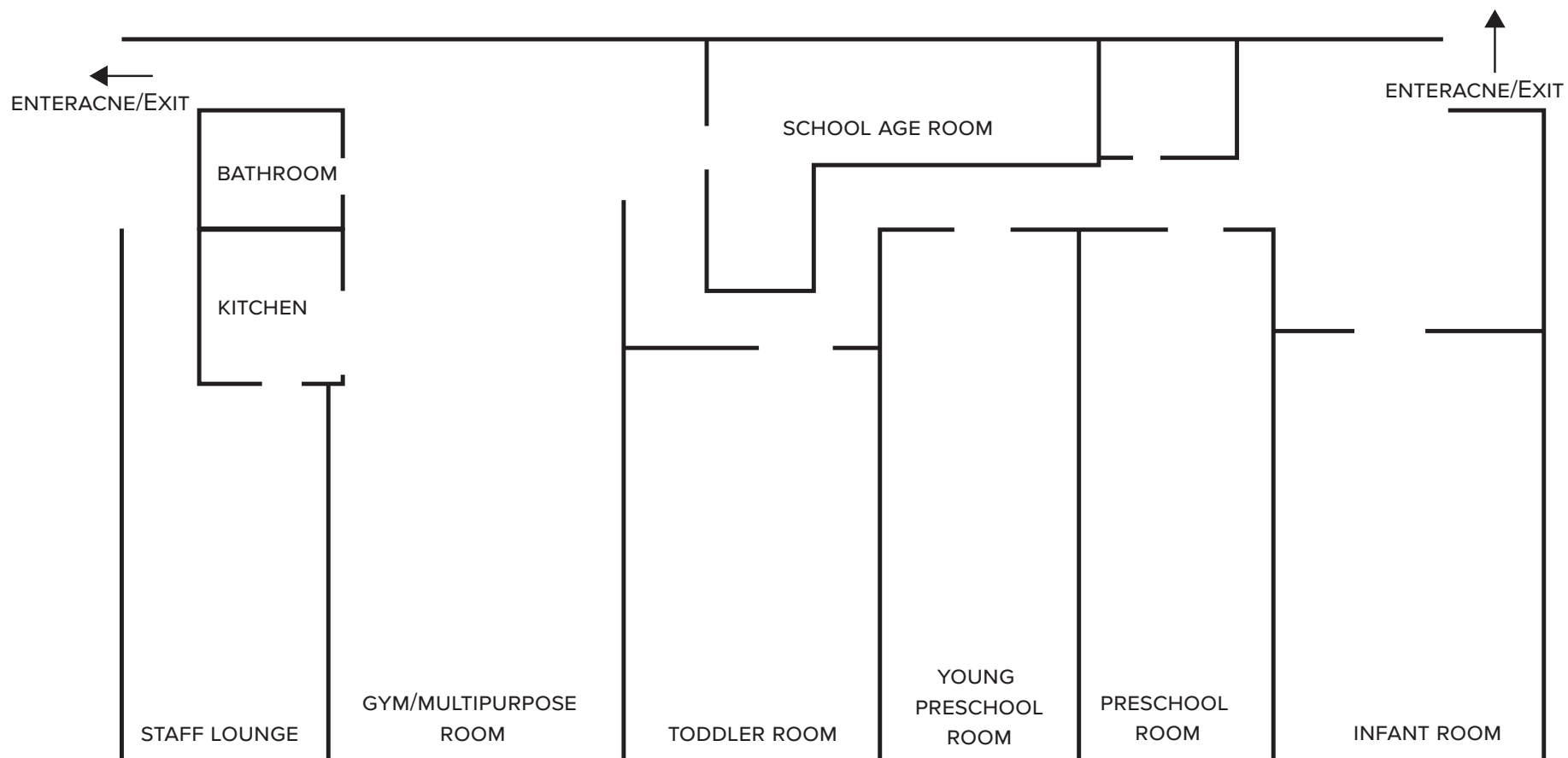
← No warranty or representation is made to the accuracy of the foregoing information. Terms of sale or lease and availability are subject to change or withdrawal without notice. →



FOR LEASE

2165 Hwy 2 E, Kalispell, MT 59901

Day Care Floor Plan



***NOT DRAWN TO SCALE**



No warranty or representation is made to the accuracy of the foregoing information. Terms of sale or lease and availability are subject to change or withdrawal without notice.

FOR LEASE

2165 Hwy 2 E, Kalispell, MT 59901

Aerial



Scott Duhs - Owner
Scott@duhscommercial.com | (406) 414-6022



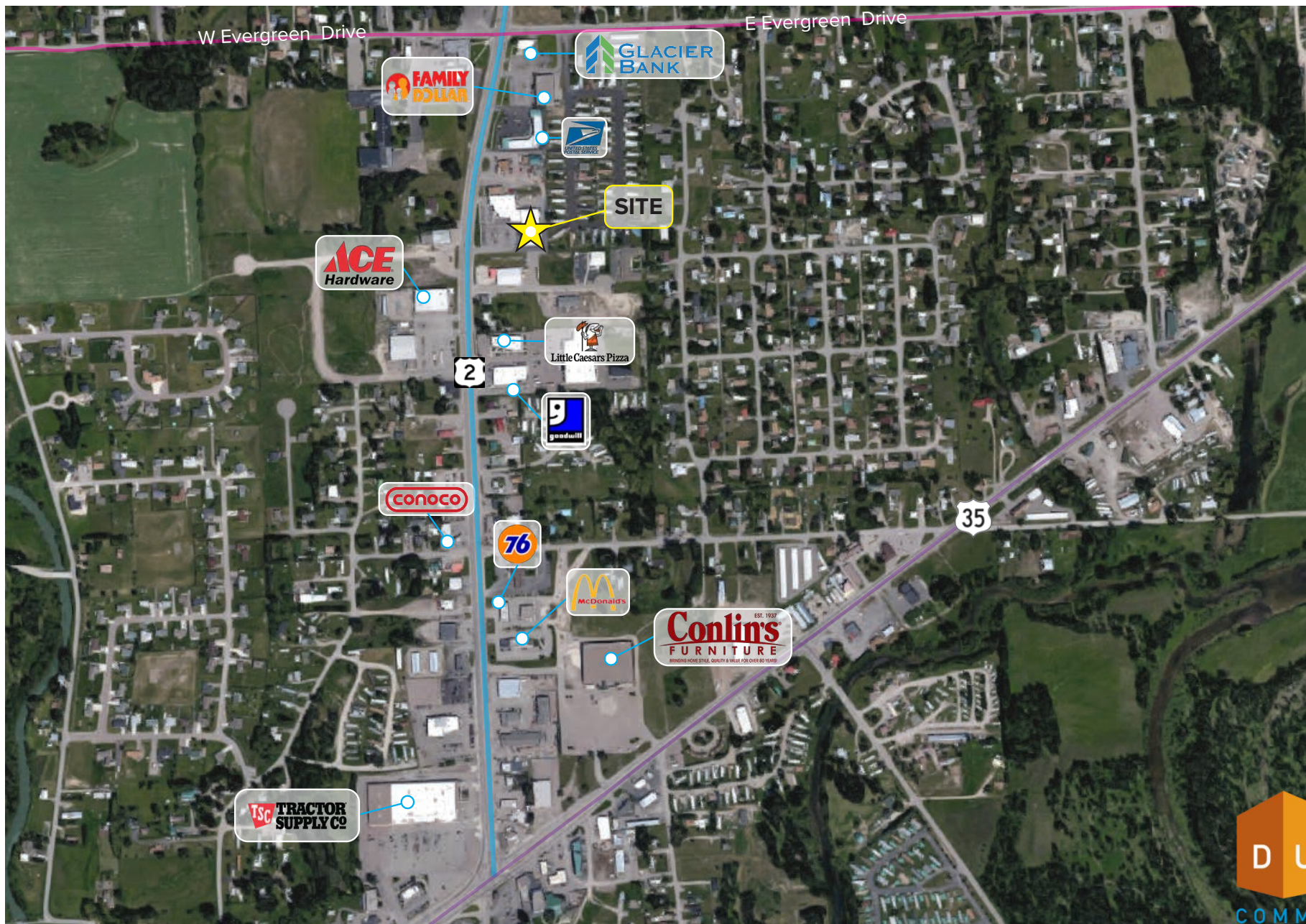
No warranty or representation is made to the accuracy of the foregoing information. Terms of sale or lease and availability are subject to change or withdrawal without notice.



FOR LEASE

2165 Hwy 2 E, Kalispell, MT 59901

Aerial



No warranty or representation is made to the accuracy of the foregoing information. Terms of sale or lease and availability are subject to change or withdrawal without notice.

— FOR LEASE

MONTANA SHOPPING CENTER

2165 Hwy 2 E, Kalispell, MT 59901

Available:
5,940 SF (Former Day Care)
18,000 SF (Former Joann's)

For More Information, Please Contact

Scott Duhs - Owner

Scott@duhscommercial.com

(406) 414-6022



COMMERCIAL
BROKERAGE • INVESTMENT • DEVELOPMENT

