

FOR LEASE

Former Joann's | 2165 Hwy 2 E, Kalispell, MT 59901

Available: 5,940 SF - 18,000 SF



Scott Duhs - Owner

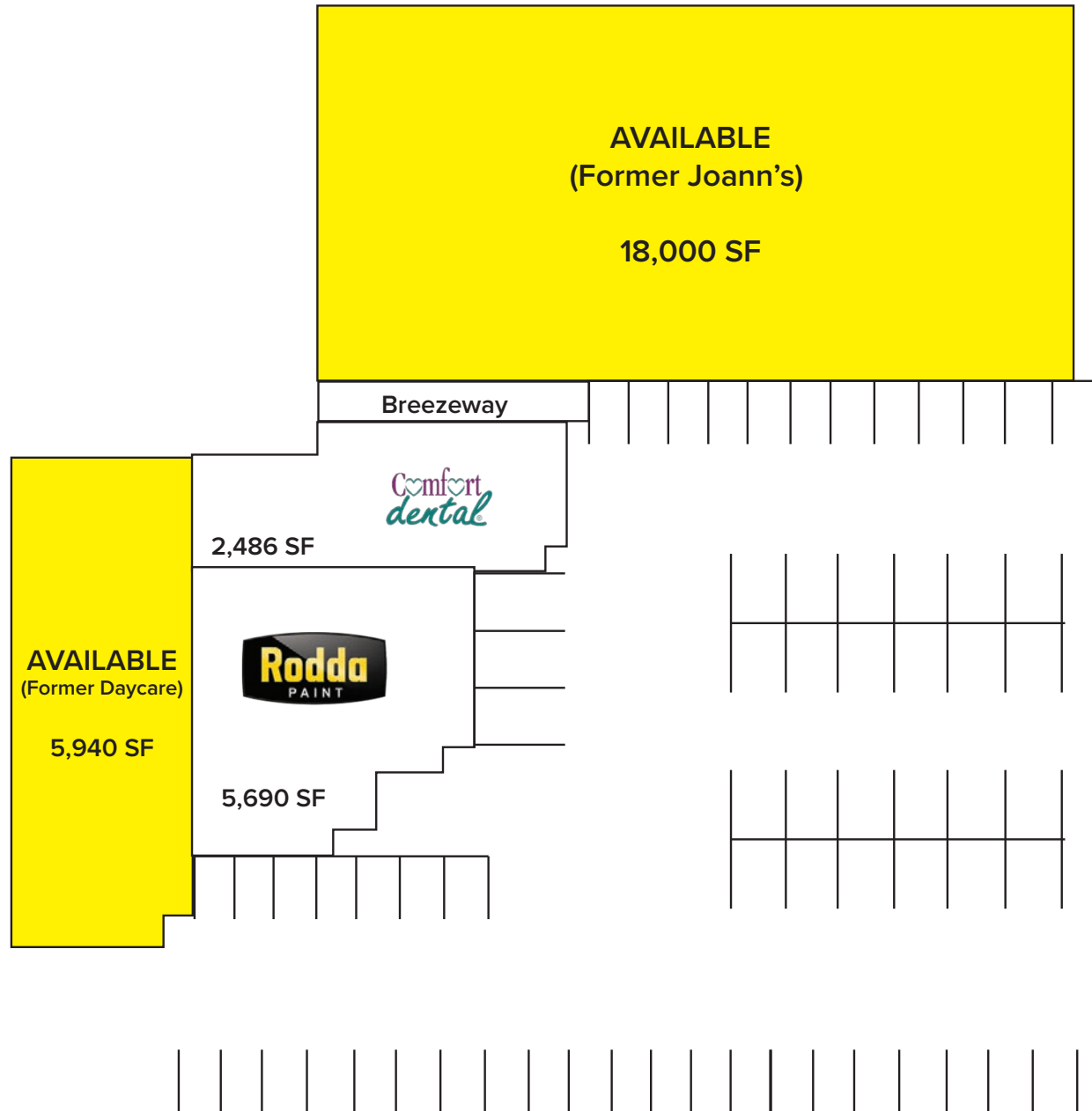
Scott@duhscommercial.com | (406) 414-6022



No warranty or representation is made to the accuracy of the foregoing information. Terms of sale or lease and availability are subject to change or withdrawal without notice.

SITE PLAN

2165 Hwy 2 E, Kalispell, MT 59901

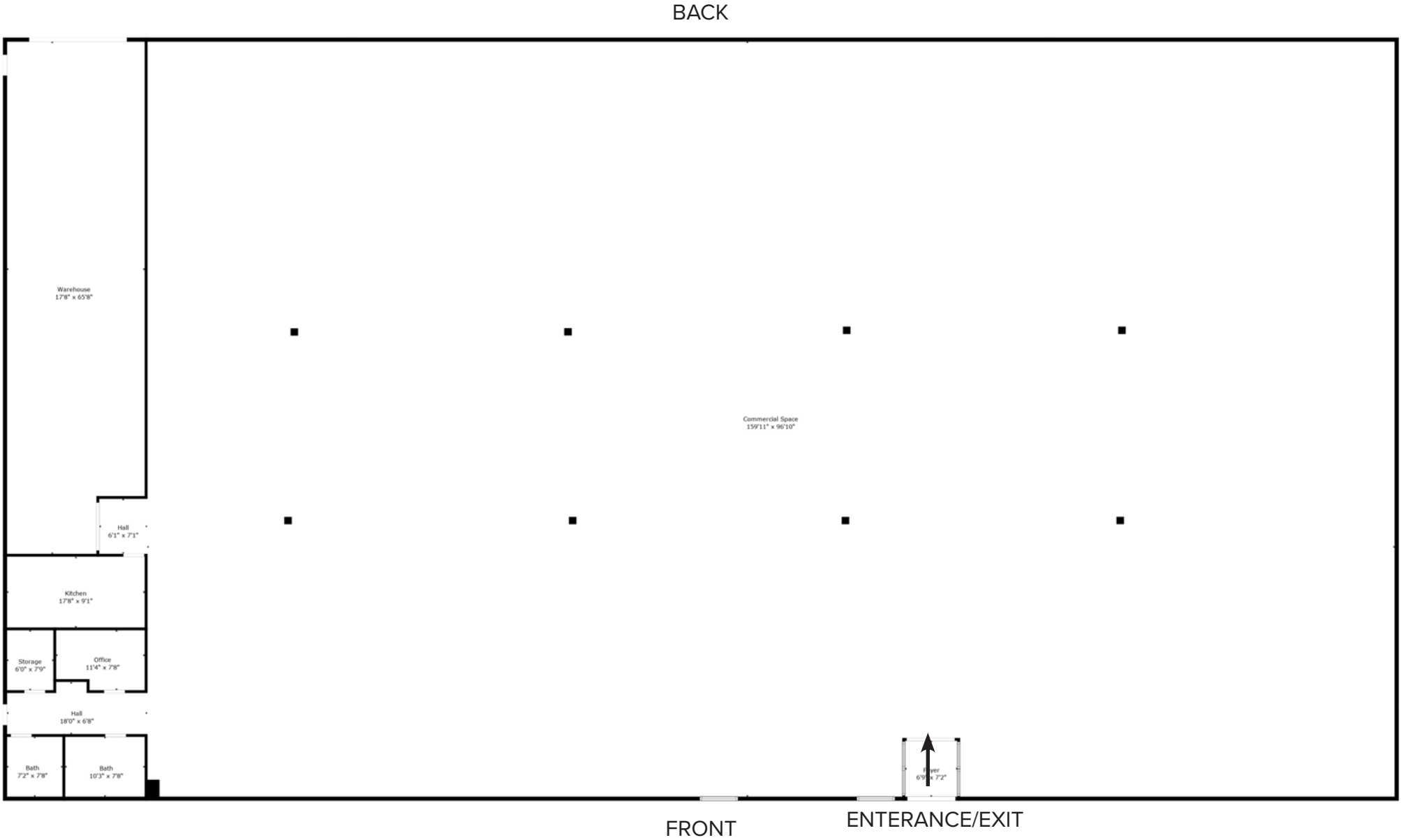


← HWY 2 →

No warranty or representation is made to the accuracy of the foregoing information. Terms of sale or lease and availability are subject to change or withdrawal without notice.

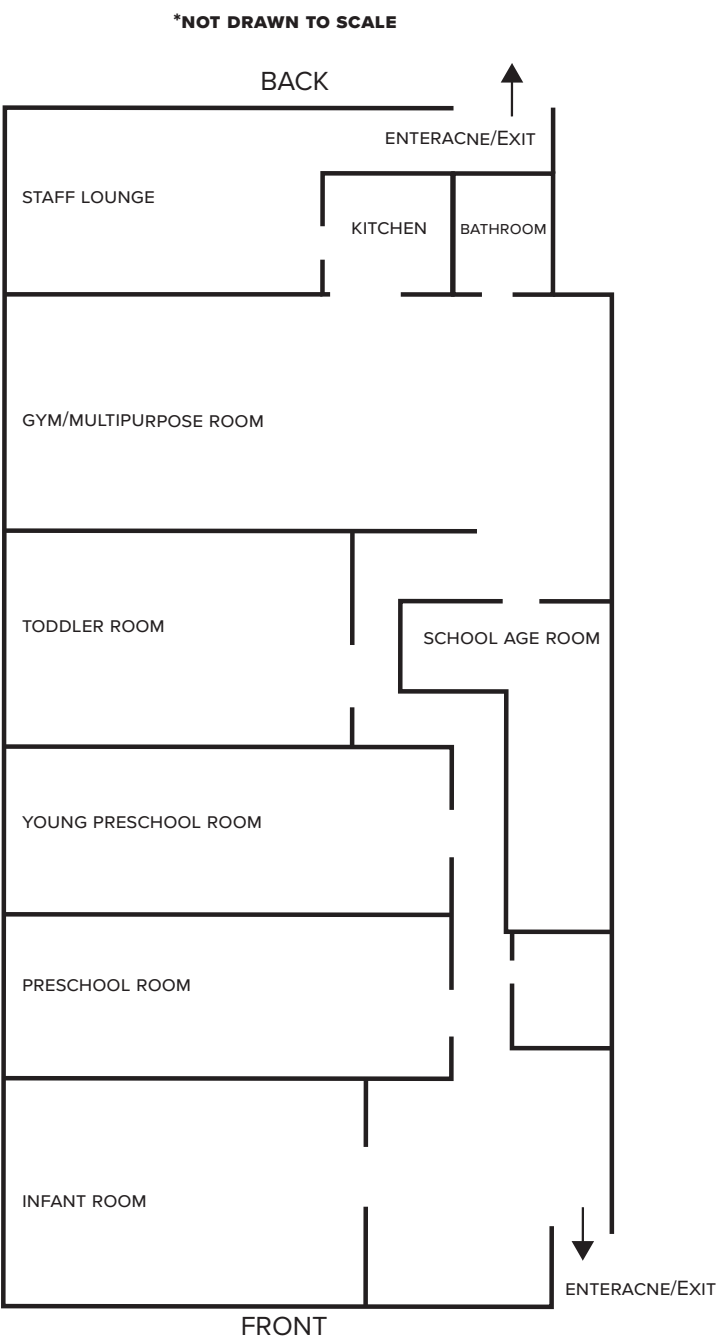
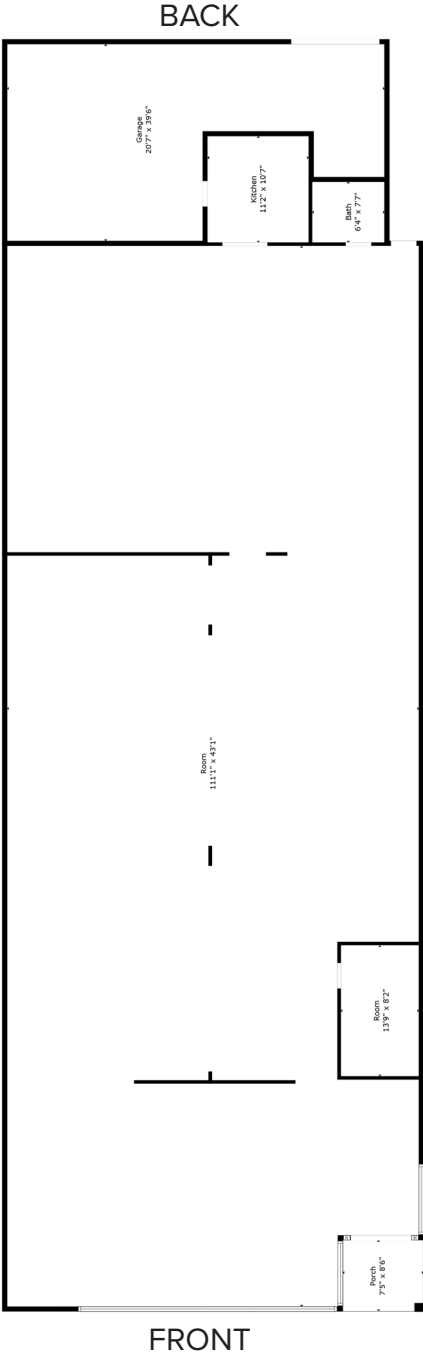
FORMER JOANN'S

Approximately 18,000 SF



FORMER DAYCARE

Approx. 5,940 SF



AERIAL

2165 Hwy 2 E, Kalispell, MT 59901



Scott Duhs - Owner

Scott@duhscommercial.com | (406) 414-6022

No warranty or representation is made to the accuracy of the foregoing information. Terms of sale or lease and availability are subject to change or withdrawal without notice.



SITE SOURCE

AERIAL

2165 Hwy 2 E, Kalispell, MT 59901



COMMERCIAL
BROKERAGE • INVESTMENT • DEVELOPMENT

SITE SOURCE

No warranty or representation is made to the accuracy of the foregoing information. Terms of sale or lease and availability are subject to change or withdrawal without notice.

MONTANA SHOPPING CENTER

2165 Hwy 2 E, Kalispell, MT 59901

Available:

5,940 SF (Former Day Care)

18,000 SF (Former Joann's)

For More Information, Please Contact

Scott Duhs - Owner

Scott@duhscommercial.com

(406) 414-6022



COMMERCIAL
BROKERAGE • INVESTMENT • DEVELOPMENT