

— FOR LEASE – SUNDAYS ONLY

13732 Clinton Street, Garden Grove, CA 92843

Church Realty Solutions & Duhs Commercial are Proud to Offer:

A World Class Auditorium - Completely Remodeled and Reconstructed

Located on the Grounds of Orangewood Academy

Additional Class Rooms with Auditorium also Available

Lease Rates Beginning at \$7,000 - \$8,500 Per Month



Thomas Morgan, CCIM

Retail Specialist/Church Broker | CA License: 00456112
(619) 944-3051 | tom@duhscommercial.com

Thomas A. Smith

NAI San Diego | CA License: 01885333
(858) 692-7911 | tsmith@naisandiego.com



No warranty or representation is made to the accuracy of the foregoing information. Terms of sale or lease and availability are subject to change or withdrawal without notice.

— FOR LEASE— SUNDAYS ONLY

13732 Clinton Street, Garden Grove, CA 92843



Church Realty Solutions & Duhs Commercial are Proud to Offer: For Lease

- Auditorium Includes 400+ Seats!
- 90+ Parking Spaces Available

Thomas Morgan, CCIM

Retail Specialist/Church Broker | CA License: 00456112
(619) 944-3051 | tom@duhscommercial.com

Thomas A. Smith

NAI San Diego | CA License: 01885333
(858) 692-7911 | tsmith@naisandiego.com

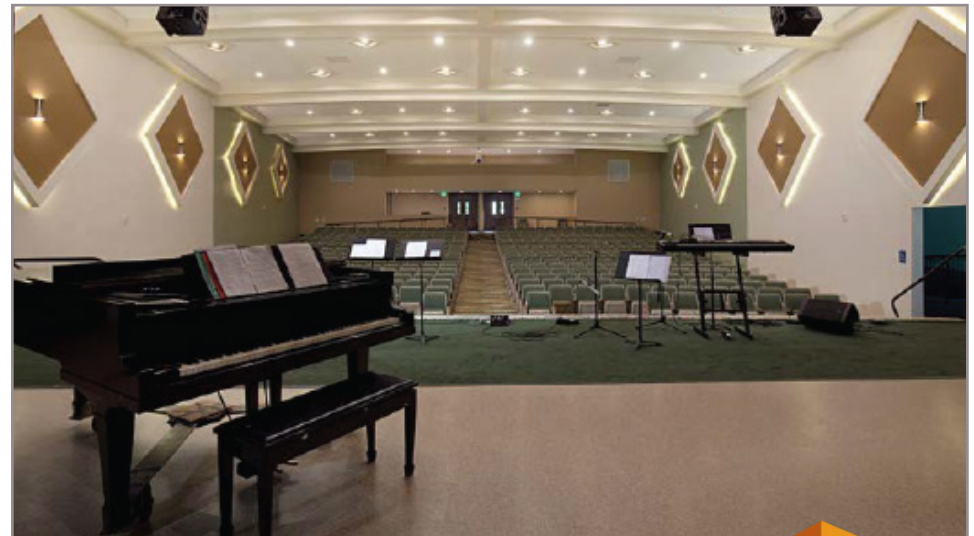


No warranty or representation is made to the accuracy of the foregoing information. Terms of sale or lease and availability are subject to change or withdrawal without notice.

AUDITORIUM PHOTOS

13732 Clinton Street, Garden Grove, CA 92843

Contains
400+
Seats!!



Thomas Morgan, CCIM

Retail Specialist/Church Broker | CA License: 00456112
(619) 944-3051 | tom@duhscommercial.com

Thomas A. Smith

NAI San Diego | CA License: 01885333
(858) 692-7911 | tsmith@naisandiego.com



No warranty or representation is made to the accuracy of the foregoing information. Terms of sale or lease and availability are subject to change or withdrawal without notice.



HISTORY OF ORANGEWOOD ACADEMY

13732 Clinton Street, Garden Grove, CA 92843

THE HISTORY BEHIND AND THE FABRIC WITHIN ORANGEWOOD ACADEMY

Orangewood Academy traces its history back to Centralia, where the local Adventist Church established what is believed to be the first Seventh-day Adventist church school in the State of California. The church school was established in 1896 under the visionary leadership of Mr. Milton Henry Shirley who served as an elder in his local church. A native of the Dakotas, he came to California in 1881 and joined the Adventist Church. The first teacher, by the name Carrie Hacker, was hired in 1896. She remained at her post for only one year. Alma McKibbin was hired as the second teacher for the small, unfinished one-room school, located in the back of the Centralia SDA Church. The entire student body consisted of about 30 students spread over nine grades. Classes ran from 8:00 a.m. to 5:00 p.m., or even later. All classes were taught without books. The teacher wrote the lessons on the blackboard.

In 1944 the Centralia School joined forces with a church school run by the Santa Ana SDA Church, which had been in operation since 1910. Under the leadership of Wilton O. Baldwin, Superintendent of Schools for the Southeastern California Conference of Seventh-day Adventists, the first Adventist union school in Orange County was established on Valencia Drive in Fullerton. It became known as the Valencia Junior Academy. It operated as a junior academy until 1956.

Early in 1950, ten acres of land were purchased at 13732 Clinton Avenue, in Garden Grove, in the heart of north Orange County. This became the new site for an enlarged junior academy. The new school opened in 1956 with 243 students spread over 10 grades. It provided a complete teaching staff, including an excellent music department. By 1959, the school counted on the support of 16 churches throughout Orange County, with a combined membership of approximately 6,300.

In 1961 the school expanded to include 11th and 12th grades. The plans drawn up by Lester Park became reality. The high school moved into the new buildings and the elementary school occupied the junior academy campus. In September 1961, Orangewood Academy became a full-fledged senior academy with an enrollment of 115. It graduated its first class of 23 in 1962.

Since 1967 the school has added a full gymnasium, a 400+ seat auditorium, more classrooms, locker rooms, shower facilities, a maintenanceshop, and a preschool. Plans are progressing towards a new and refurbished campus. The vision launched in the 19th century continues now as we are in the second decade of the 21st century.

Thomas Morgan, CCIM

Retail Specialist/Church Broker | CA License: 00456112
(619) 944-3051 | tom@duhscommercial.com

Thomas A. Smith

NAI San Diego | CA License: 01885333
(858) 692-7911 | tsmith@naisandiego.com



SITE PLAN

13732 Clinton Street, Garden Grove, CA 92843

SITE PLAN KEY	
	NOT FOR LEASE
	FOR LEASE



*MAY NOT BE DRAWN TO SCALE

Thomas Morgan, CCIM

Retail Specialist/Church Broker | CA License: 00456112
 (619) 944-3051 | tom@duhscommercial.com

Thomas A. Smith

NAI San Diego | CA License: 01885333
 (858) 692-7911 | tsmith@naisandiego.com



No warranty or representation is made to the accuracy of the foregoing information. Terms of sale or lease and availability are subject to change or withdrawal without notice.

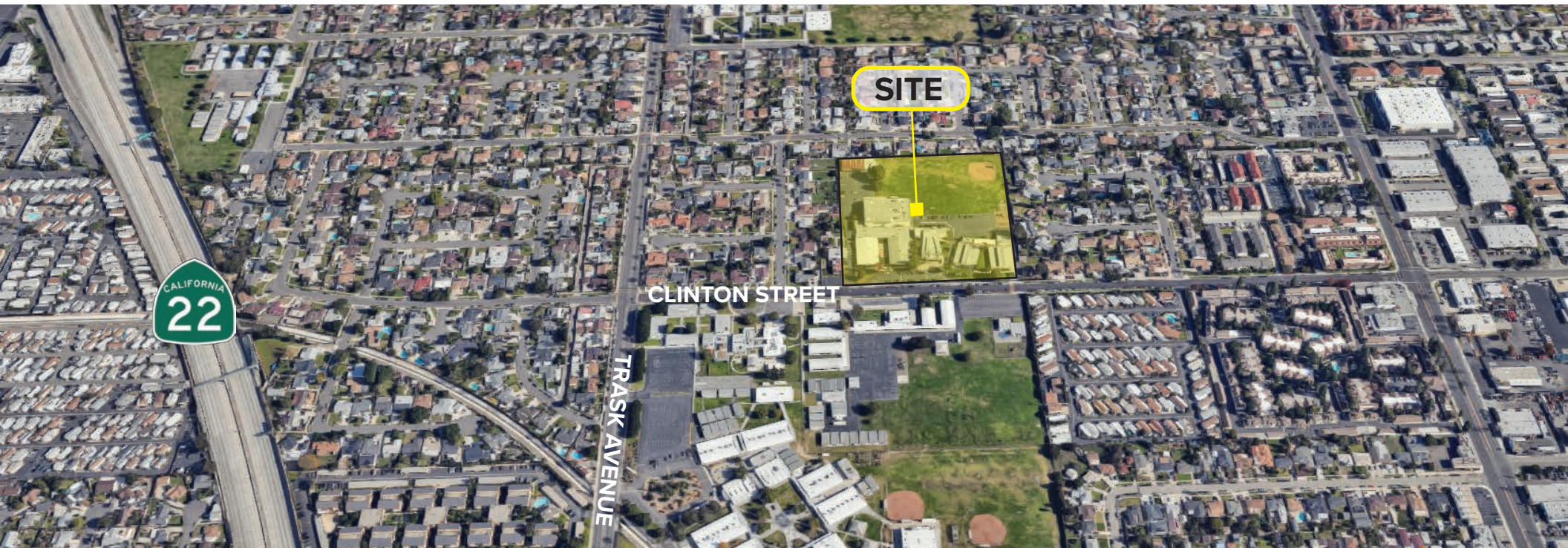


AERIAL

13732 Clinton Street, Garden Grove, CA 92843

DEMOGRAPHICS

	<u>2 Miles</u>	<u>5 Miles</u>
POPULATION	143,849	758,617
MEDIAN HOME VALUE	\$635,125	\$686,781
HOUSEHOLDS	35,015	209,145
AVG. HOUSEHOLD INCOME	\$95,521	\$99,297



Thomas Morgan, CCIM

Retail Specialist/Church Broker | CA License: 00456112
(619) 944-3051 | tom@duhscommercial.com

Thomas A. Smith

NAI San Diego | CA License: 01885333
(858) 692-7911 | tsmith@naisandiego.com



No warranty or representation is made to the accuracy of the foregoing information. Terms of sale or lease and availability are subject to change or withdrawal without notice.

— FOR LEASE— SUNDAYS ONLY

13732 Clinton Street, Garden Grove, CA 92843

PLANT YOUR CHURCH HERE



Thomas Morgan, CCIM

Retail Specialist/Church Broker | CA License: 00456112
(619) 944-3051 | tom@duhscommercial.com

Thomas A. Smith

NAI San Diego | CA License: 01885333
(858) 692-7911 | tsmith@naisandiego.com



No warranty or representation is made to the accuracy of the foregoing information. Terms of sale or lease and availability are subject to change or withdrawal without notice.