

# FOR LEASE - SHARED-USE CHURCH PROPERTY

## 4999 HOLLY DRIVE, SAN DIEGO, CA 92113

### DETAILS

Space Available:	±13,220 SF, sanctuary seats; ±250, Fellowship hall; Approx. 100 occupancy
Days/Hours Available:	Sunday Afternoons; Select Weeknights
Term:	Min.1-year Initial Term
Parking:	Large On-Site; first come first serve basis; Aprox.107 spaces
Janitorial:	Tenant responsible for cleaning after each use.
Utilities:	Tenant to pay its share of utilities
Lease Rate:	Negotiable (dependent upon days, hours, amount of space used) Contact Agent for Details



### PROPERTY HIGHLIGHTS:

Shared use church space for lease in San Diego. The available space includes: Sanctuary, Fellowship Hall, Kitchen, and On-Site Parking. Available Sunday afternoons, and select weeknights. Please do not disturb the church.

**L. Thomas Morgan, CCIM**

Servant | Church Broker | DRE #: 00456112

(619) 944-3051 | Tom@DuhsCommercial.com

**Anthony Acosta, CCIM**

Senior Broker Associate | DRE #: 01900150

(619) 491 -0048 | Anthony@DuhsCommercial.com



No warranty or representation is made to the accuracy of the foregoing information. Terms of sale or lease and availability are subject to change or withdrawal without notice.

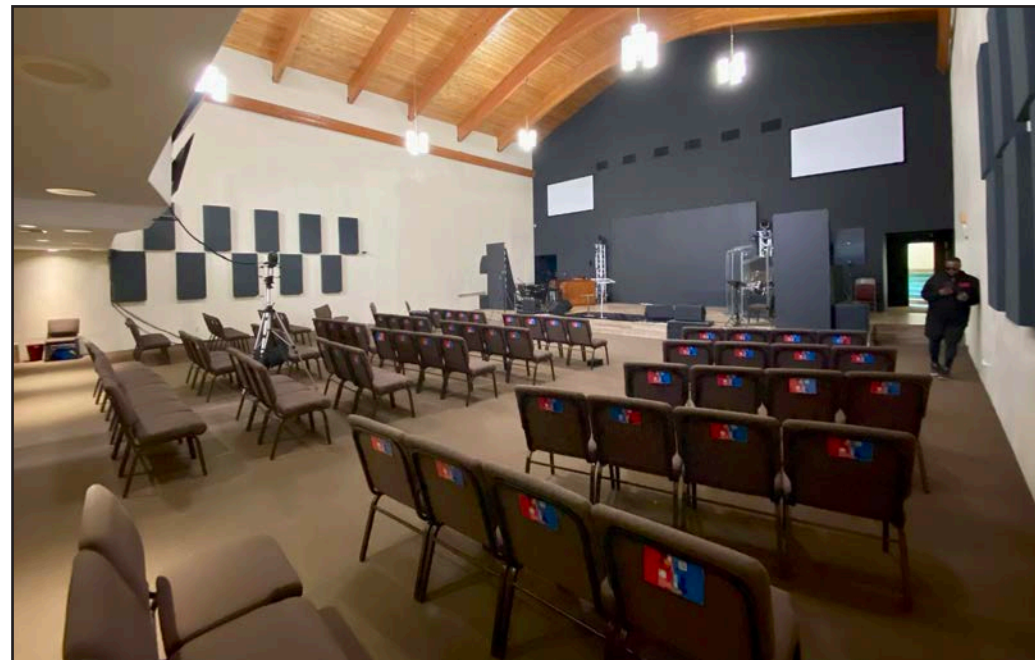
SITE SOURCE



# SANCTUARY

## SHARED-USE CHURCH PROPERTY

4999 Holly Drive, San Diego, CA 92113





# SANCTUARY- BALCONY VIEW

## SHARED-USE CHURCH PROPERTY

4999 Holly Drive, San Diego, CA 92113



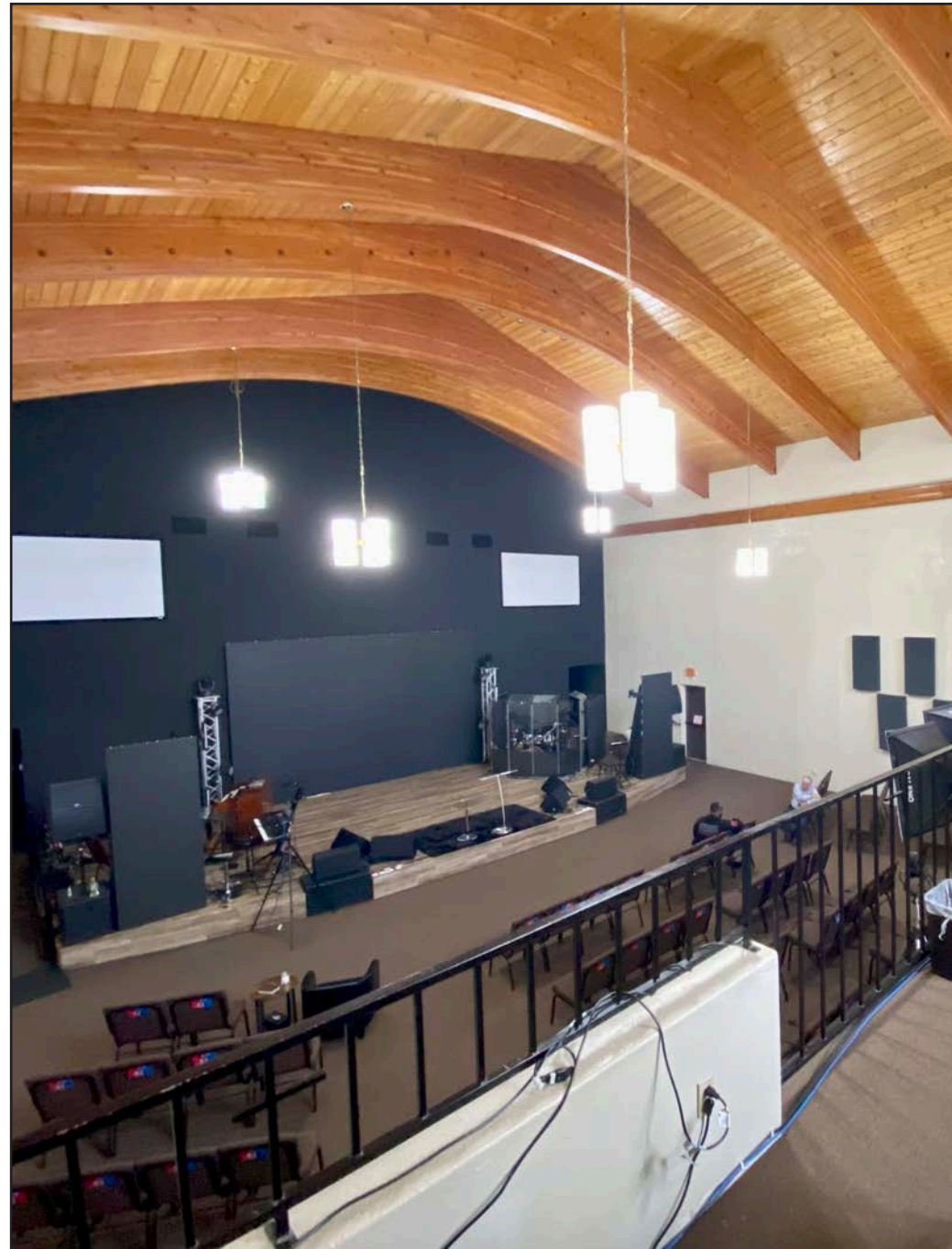
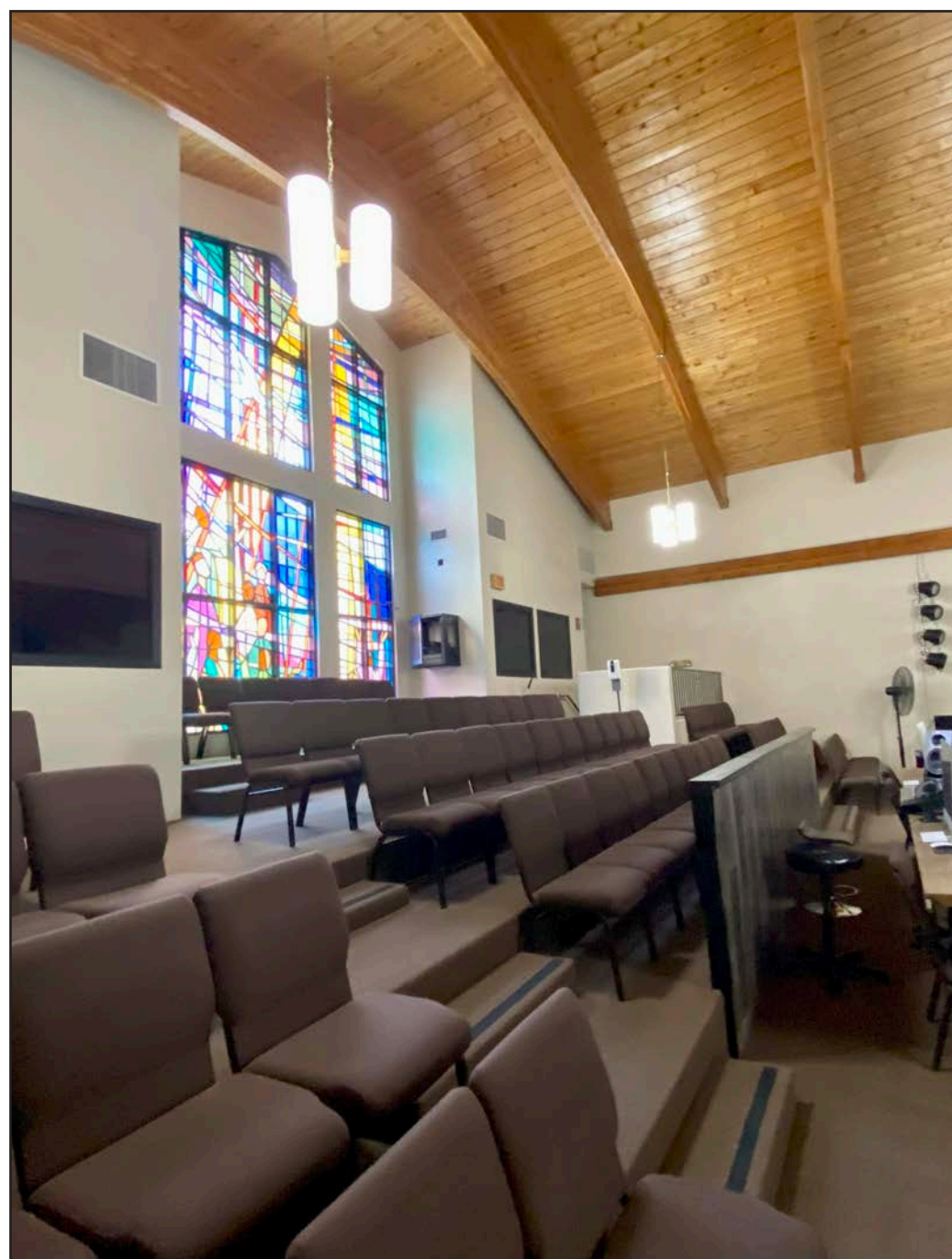
No warranty or representation is made to the accuracy of the foregoing information. Terms of sale or lease and availability are subject to change or withdrawal without notice.



# SANCTUARY - BALCONY VIEW

## SHARED-USE CHURCH PROPERTY

4999 Holly Drive, San Diego, CA 92113



# FELLOWSHIP HALL

**SHARED-USE CHURCH PROPERTY**

4999 Holly Drive, San Diego, CA 92113





# NURSERY ROOM

**SHARED-USE CHURCH PROPERTY**

4999 Holly Drive, San Diego, CA 92113



No warranty or representation is made to the accuracy of the foregoing information. Terms of sale or lease and availability are subject to change or withdrawal without notice.

# KITCHEN

**SHARED-USE CHURCH PROPERTY**

4999 Holly Drive, San Diego, CA 92113



No warranty or representation is made to the accuracy of the foregoing information. Terms of sale or lease and availability are subject to change or withdrawal without notice.



# PARKING LOT

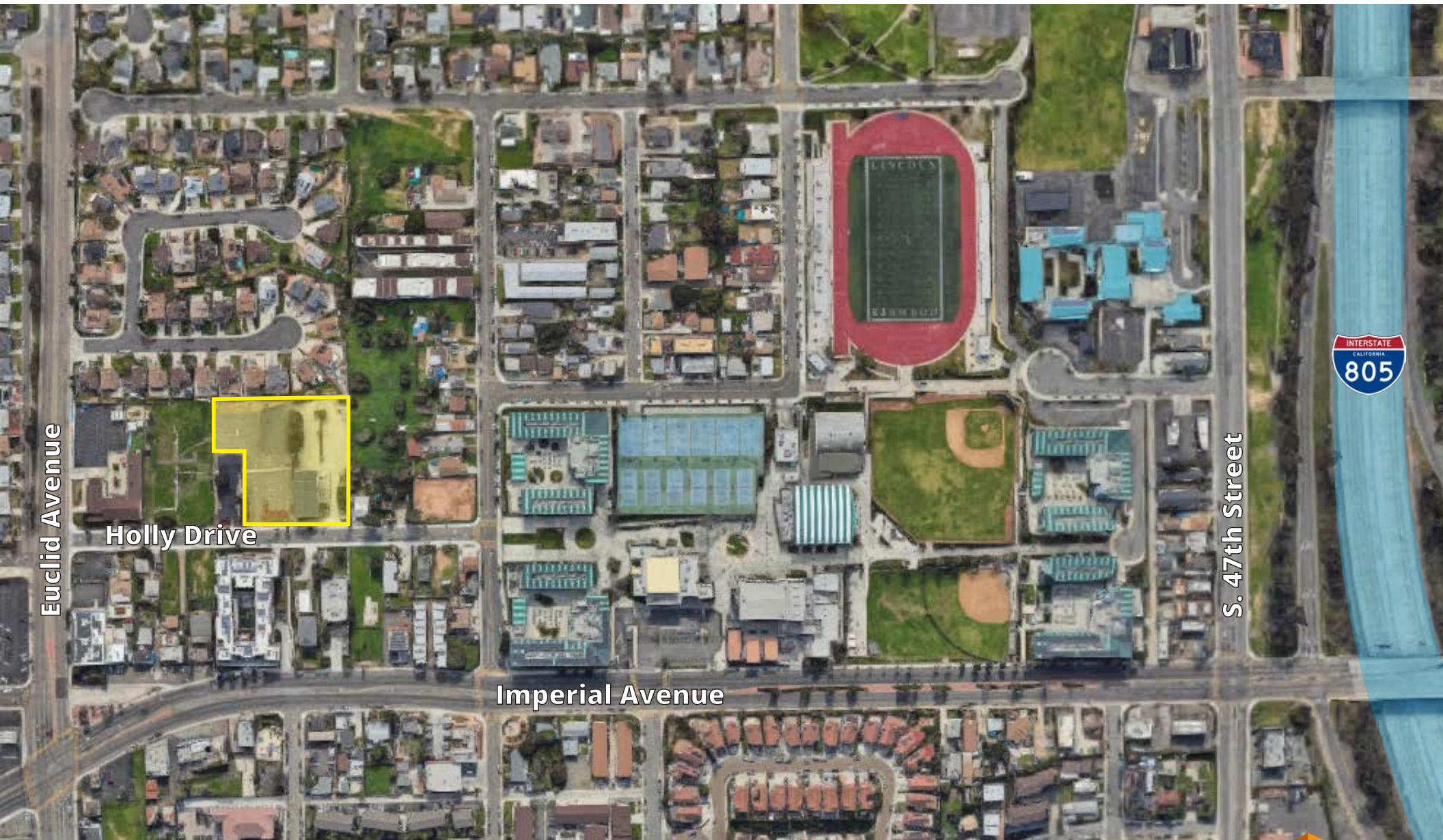
## SHARED-USE CHURCH PROPERTY

4999 Holly Drive, San Diego, CA 92113



No warranty or representation is made to the accuracy of the foregoing information. Terms of sale or lease and availability are subject to change or withdrawal without notice.





**L. Thomas Morgan, CCIM**

Servant | Church Broker | DRE #: 00456112

(619) 944-3051 | Tom@DuhsCommercial.com

**Anthony Acosta, CCIM**

Senior Broker Associate | DRE #: 01900150

(619) 491 -0048 | Anthony@DuhsCommercial.com

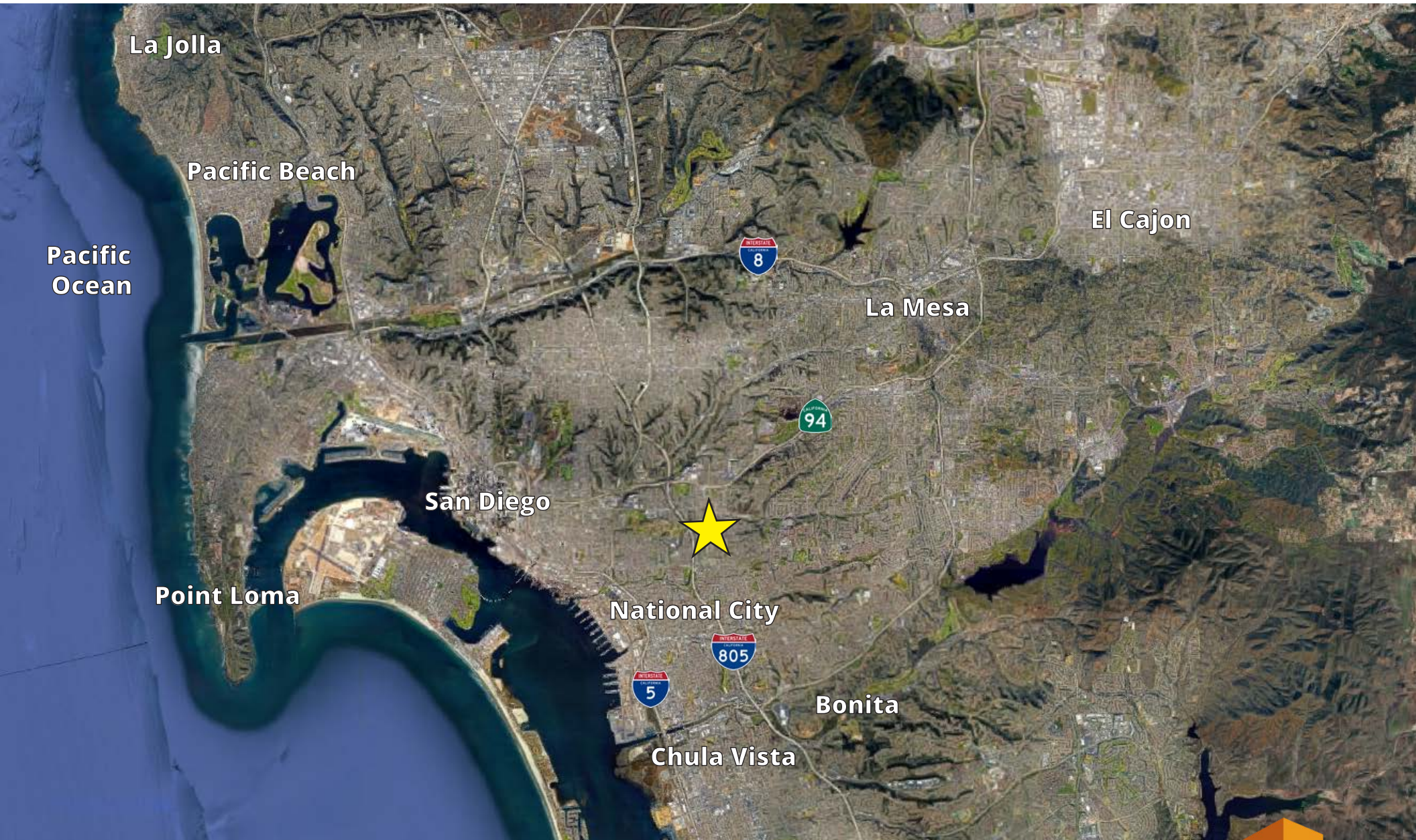




# REGIONAL MAP

## SHARED-USE CHURCH PROPERTY

4999 Holly Drive, San Diego, CA 92113



**L. Thomas Morgan, CCIM**

Servant | Church Broker | DRE #: 00456112

(619) 944-3051 | Tom@DuhsCommercial.com

**Anthony Acosta, CCIM**

Senior Broker Associate | DRE #: 01900150

(619) 491 -0048 | Anthony@DuhsCommercial.com



No warranty or representation is made to the accuracy of the foregoing information. Terms of sale or lease and availability are subject to change or withdrawal without notice.