

FOR LEASE - SHARED-USE CHURCH PROPERTY

4999 HOLLY DRIVE, SAN DIEGO, CA 92113

DETAILS

Space Available:	±13,220 SF, sanctuary seats; ±250, Fellowship hall; Approx. 100 occupancy
Days/Hours Available:	Sunday Afternoons; Select Weeknights
Term:	Min.1-year Initial Term
Parking:	Large On-Site Parking; first come first serve basis; Approx.107 spaces
Janitorial:	Tenant responsible for cleaning after each use.
Utilities:	Tenant to pay its share of utilities
Lease Rate:	Negotiable (dependent upon days, hours, amount of space used) Contact Agent for Details



PROPERTY HIGHLIGHTS:

Shared use church space for lease in San Diego. The available space includes: Sanctuary, Fellowship Hall, Kitchen, and On-Site Parking. Available Sunday afternoons, and select weeknights. Please do not disturb the church.

L. Thomas Morgan, CCIM

Servant | Church Broker | DRE #: 00456112

(619) 944-3051 | Tom@DuhsCommercial.com

Anthony Acosta, CCIM

Senior Broker Associate | DRE #: 01900150

(619) 491 -0048 | Anthony@DuhsCommercial.com



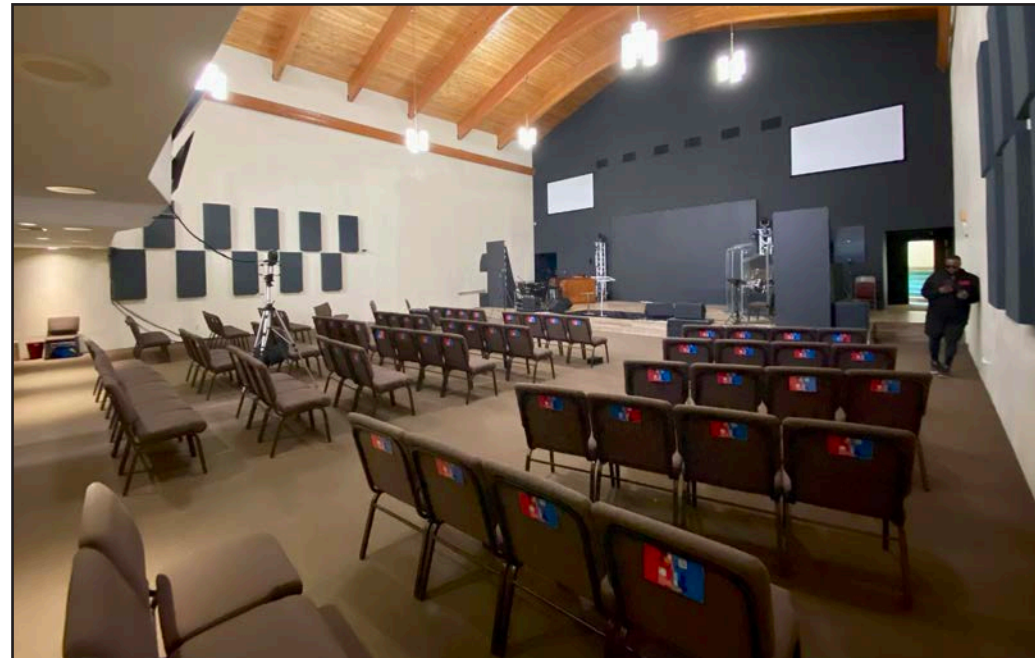
No warranty or representation is made to the accuracy of the foregoing information. Terms of sale or lease and availability are subject to change or withdrawal without notice.

SITE SOURCE

SANCTUARY

SHARED-USE CHURCH PROPERTY

4999 Holly Drive, San Diego, CA 92113



SANCTUARY- BALCONY VIEW

SHARED-USE CHURCH PROPERTY

4999 Holly Drive, San Diego, CA 92113

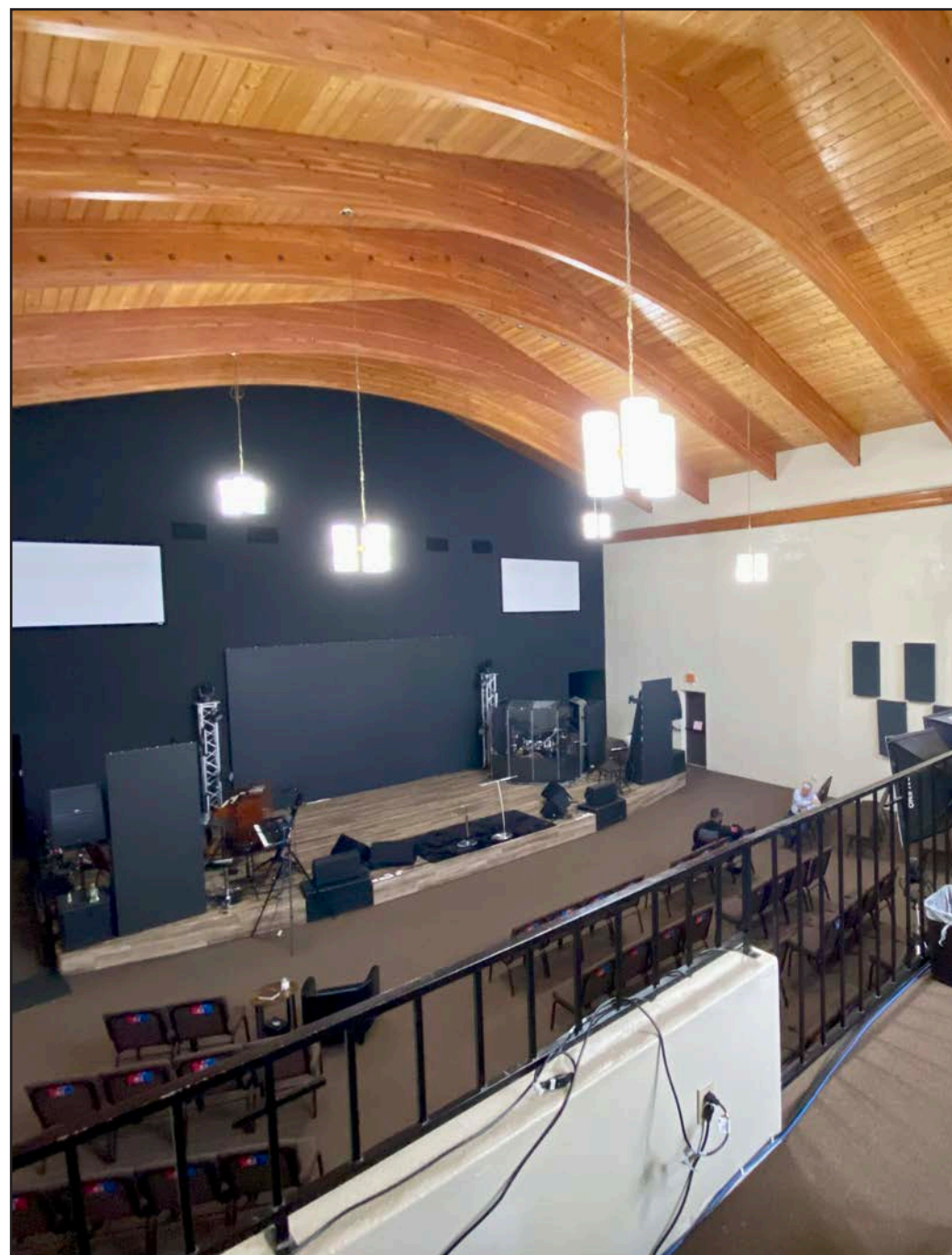


No warranty or representation is made to the accuracy of the foregoing information. Terms of sale or lease and availability are subject to change or withdrawal without notice.

SANCTUARY - BALCONY VIEW

SHARED-USE CHURCH PROPERTY

4999 Holly Drive, San Diego, CA 92113



FELLOWSHIP HALL

SHARED-USE CHURCH PROPERTY

4999 Holly Drive, San Diego, CA 92113



NURSERY ROOM

SHARED-USE CHURCH PROPERTY

4999 Holly Drive, San Diego, CA 92113



No warranty or representation is made to the accuracy of the foregoing information. Terms of sale or lease and availability are subject to change or withdrawal without notice.

KITCHEN

SHARED-USE CHURCH PROPERTY

4999 Holly Drive, San Diego, CA 92113



No warranty or representation is made to the accuracy of the foregoing information. Terms of sale or lease and availability are subject to change or withdrawal without notice.

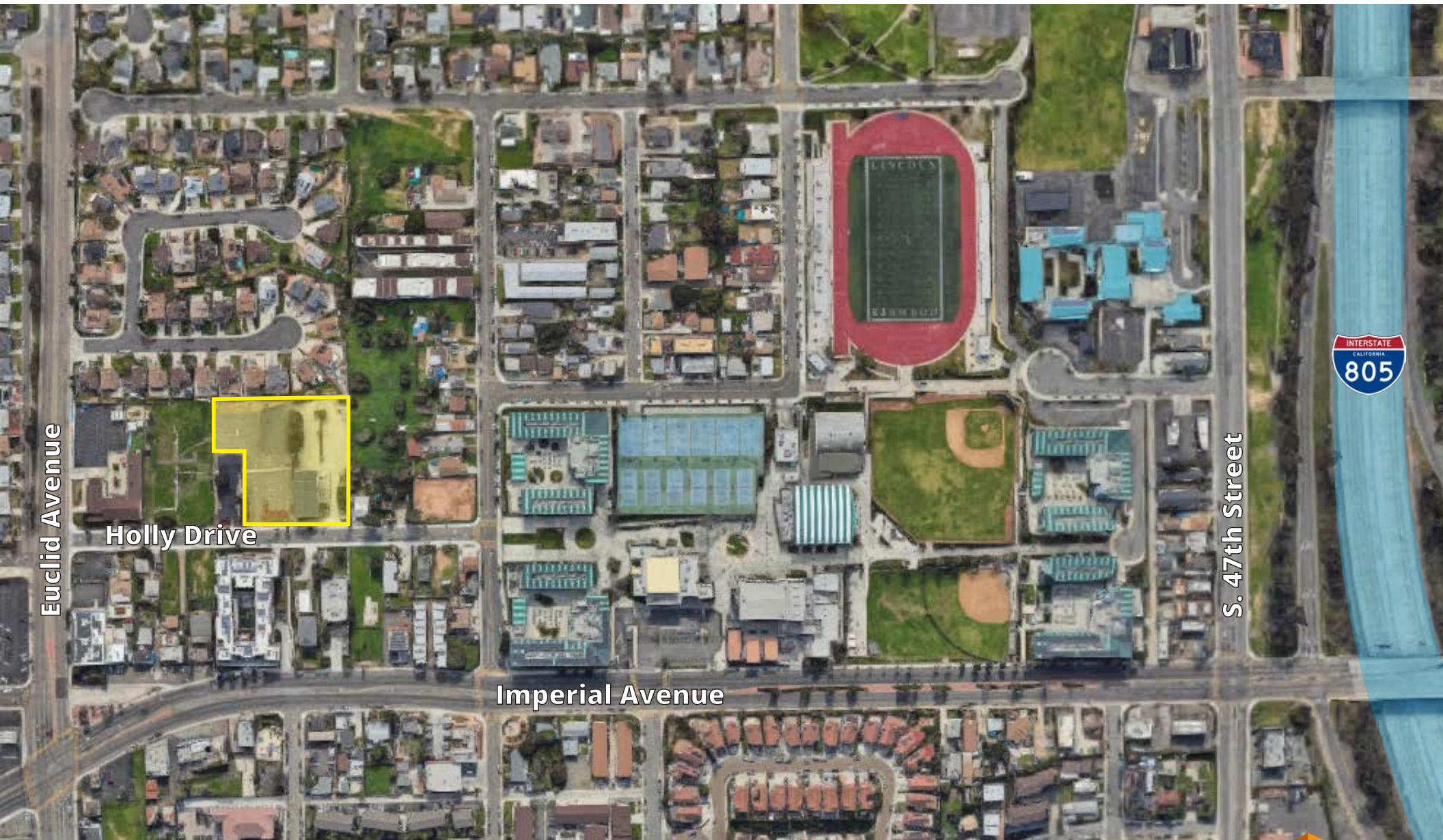
PARKING LOT

SHARED-USE CHURCH PROPERTY

4999 Holly Drive, San Diego, CA 92113



No warranty or representation is made to the accuracy of the foregoing information. Terms of sale or lease and availability are subject to change or withdrawal without notice.



L. Thomas Morgan, CCIM

Servant | Church Broker | DRE #: 00456112

(619) 944-3051 | Tom@DuhsCommercial.com

Anthony Acosta, CCIM

Senior Broker Associate | DRE #: 01900150

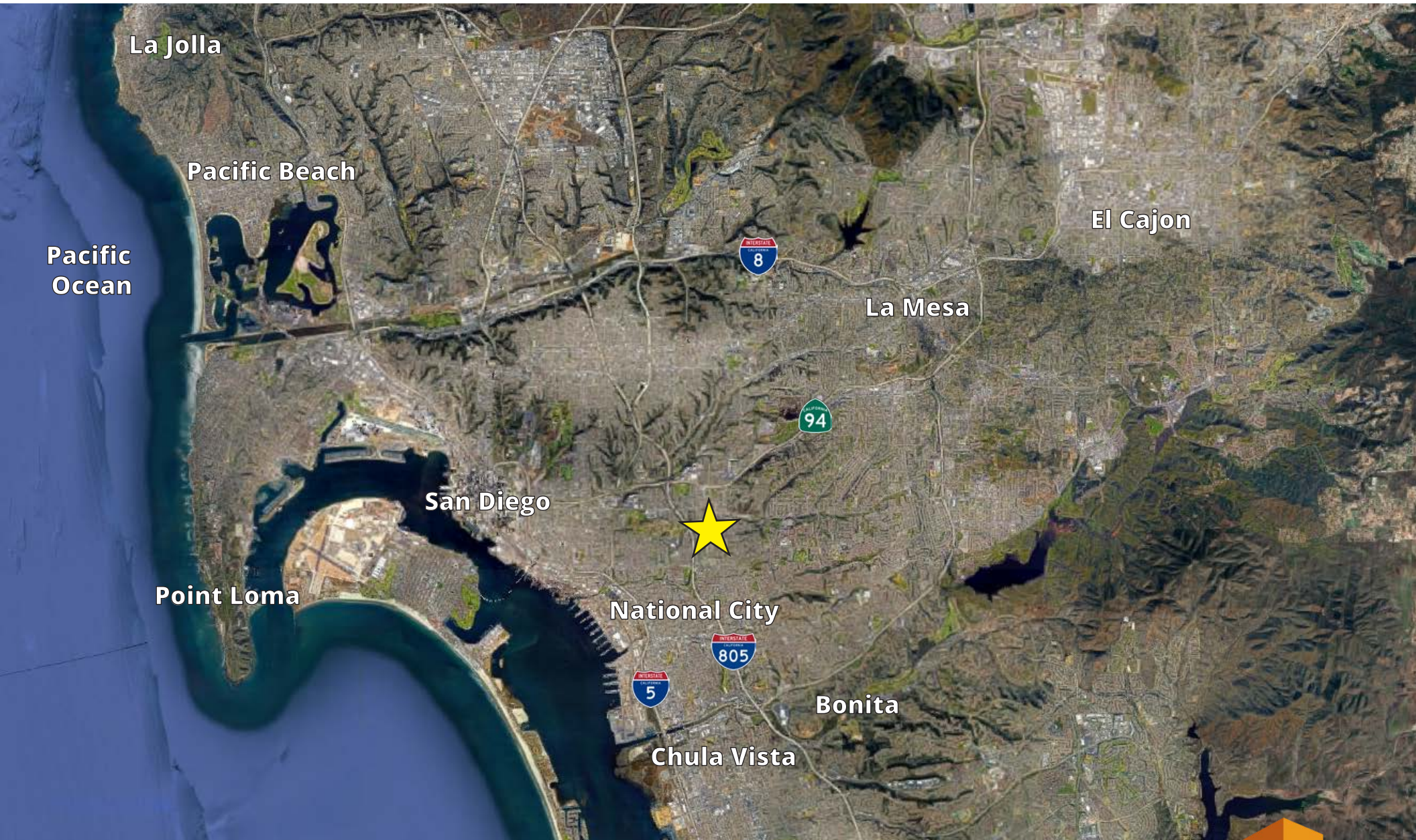
(619) 491 -0048 | Anthony@DuhsCommercial.com



REGIONAL MAP

SHARED-USE CHURCH PROPERTY

4999 Holly Drive, San Diego, CA 92113



L. Thomas Morgan, CCIM

Servant | Church Broker | DRE #: 00456112

(619) 944-3051 | Tom@DuhsCommercial.com

Anthony Acosta, CCIM

Senior Broker Associate | DRE #: 01900150

(619) 491 -0048 | Anthony@DuhsCommercial.com



No warranty or representation is made to the accuracy of the foregoing information. Terms of sale or lease and availability are subject to change or withdrawal without notice.